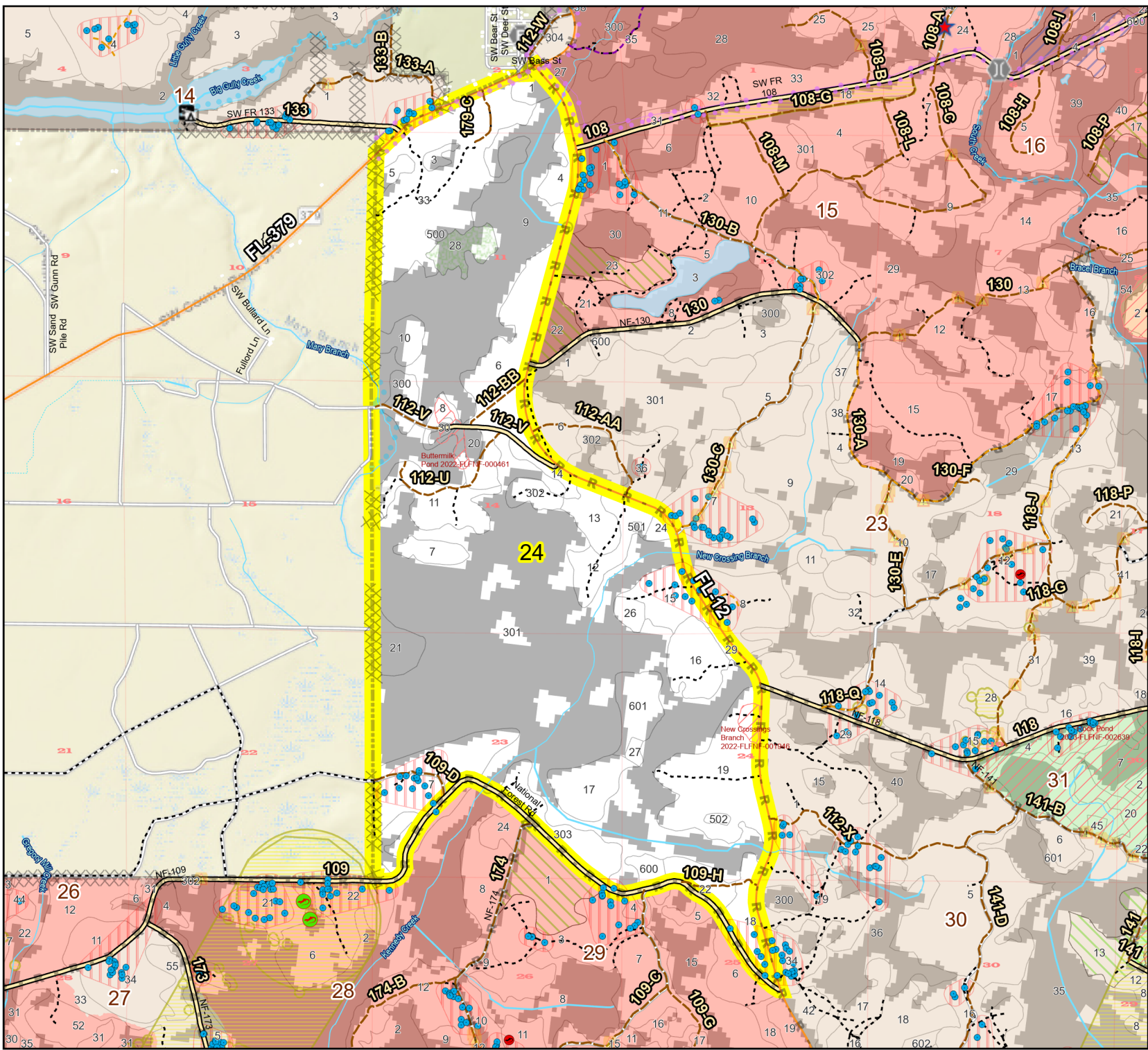


Prescribe Burn Map

District: Apalachicola
Apalachicola National Forest

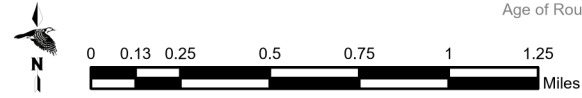
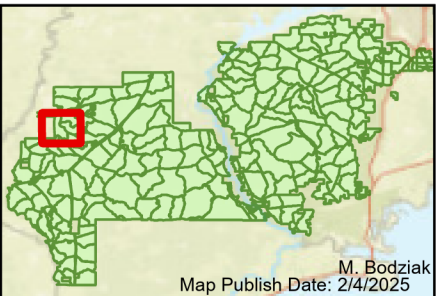
Burn Unit 24

2115 FACTS Reportable Acres
1065 Burnable Acres
Last Burned: 3/15/2013



RCW Tree	Other Line
RCW Cluster	Natural Feature Line
No	Private Boundary Line
Disturbance Zone	access by foot
Apiary	access by utv
Road Erosion	Young Longleaf
Dozer Line	Sapling Pines
Control Line	Savannah
Road	

Burn Unit Info	
Burn Unit	Yrs. Last Burn 0 - 1
Private	> 1 - 2
USFS No Burn	> 2 - 3
	> 3 - 4
	> 4 - 5
Burnable Area	
Did not burn last 27 yrs	> 5 - 10
Burned during last 27 yrs	> 10 - 15
	> 15 - 20
	> 20 - 25



Age of Rough Last Updated: 11/6/2024

BurnDate	Tr.Winds	Temp	Mix Ht.
RH	Disp. Index	Wind	KBDI
DSR	RX Position	Burn Boss	