

# Prescribe Burn Map

District: Apalachicola  
Apalachicola National Forest

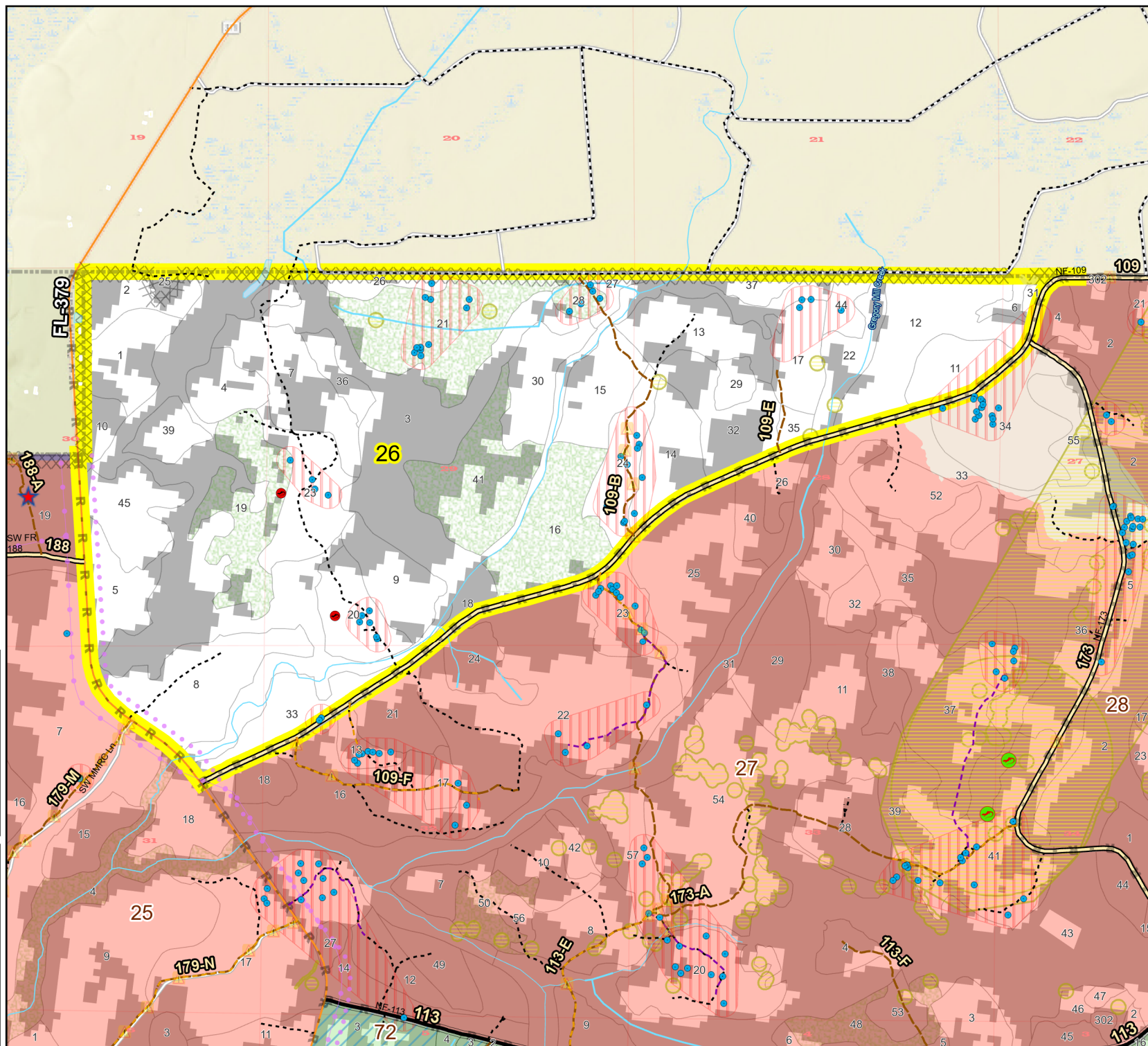
## Burn Unit 26

1372 FACTS Reportable Acres  
928 Burnable Acres  
Last Burned: 2/25/2017

RCW Tree	Dozer Line
RCW Cluster	Control Line
No	Road
Disturbance Zone	Other Line
Flatwood	Private
Salamander Potential Pond	Boundary Line
Apiary	access by foot
Road Erosion	access by utv
	Young Longleaf
	Savannah

Burn Unit Info	
Burn Unit	Yrs. Last Burn 0 - 1
Private	> 1 - 2
USFS No Burn	> 2 - 3
	> 3 - 4
	> 4 - 5
Burnable Area	
Did not burn last 27 yrs	> 5 - 10
Burned during last 27 yrs	> 10 - 15
	> 15 - 20
	> 20 - 25

M. Bodziak  
Map Publish Date: 2/4/2025



Age of Rough Last Updated: 11/6/2024

BurnDate _____	Tr.Winds _____	Temp _____	Mix Ht. _____
RH _____	Disp. Index _____	Wind _____	KBDI _____
DSR _____	RX Position _____	Burn Boss _____	