

Prescribe Burn Map

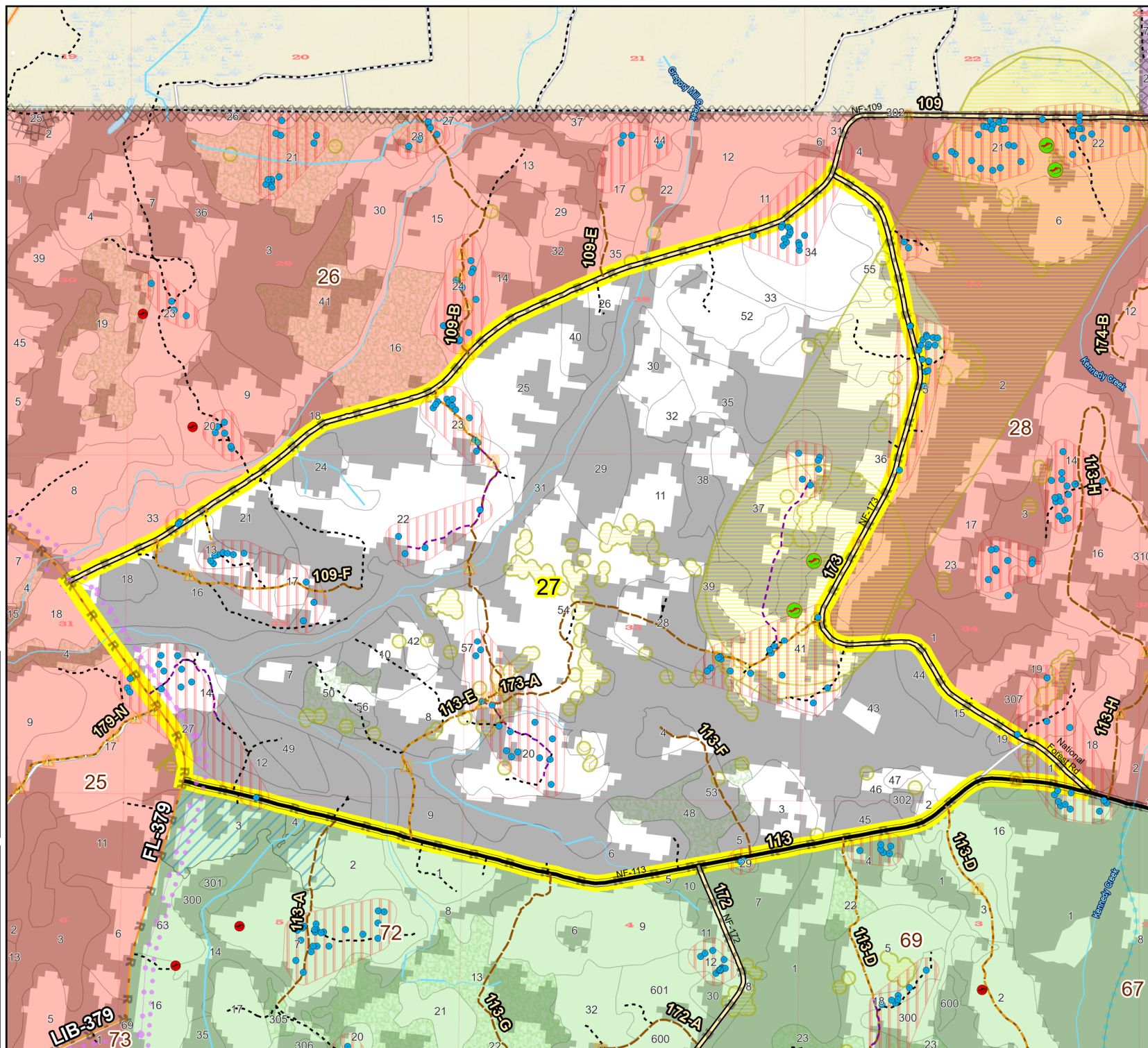
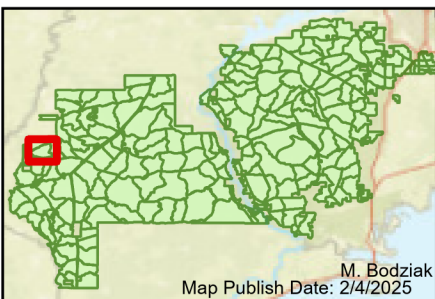
District: Apalachicola
Apalachicola National Forest

Burn Unit 27

2188 FACTS Reportable Acres
890 Burnable Acres
Last Burned: 1/12/2017

- RCW Tree
- ▨ RCW Cluster
- No Disturbance Zone
- Active FS Pond
- Flatwood
- Salamander Potential Pond
- ★ Apiary
- Ⓜ Road Erosion
- ⊠ Dozer Line
- R Control Line Road
- Other Line
- Natural Feature Line
- Private Boundary Line
- access by foot
- access by utv
- ▨ Young Longleaf Savannah

- | Burn Unit Info | |
|-----------------------------|----------------|
| ▨ Burn Unit | Yrs. Last Burn |
| ▨ Private | 0 - 1 |
| ⊠ USFS No Burn | > 1 - 2 |
| | > 2 - 3 |
| | > 3 - 4 |
| | > 4 - 5 |
| Burnable Area | |
| ▨ Did not burn last 27 yrs | > 5 - 10 |
| ▨ Burned during last 27 yrs | > 10 - 15 |
| | > 15 - 20 |
| | > 20 - 25 |



Age of Rough Last Updated: 11/6/2024

BurnDate	Tr.Winds	Temp	Mix Ht.
RH	Disp. Index	Wind	KBDI
DSR	RX Position	Burn Boss	

