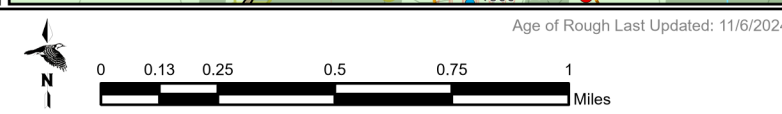
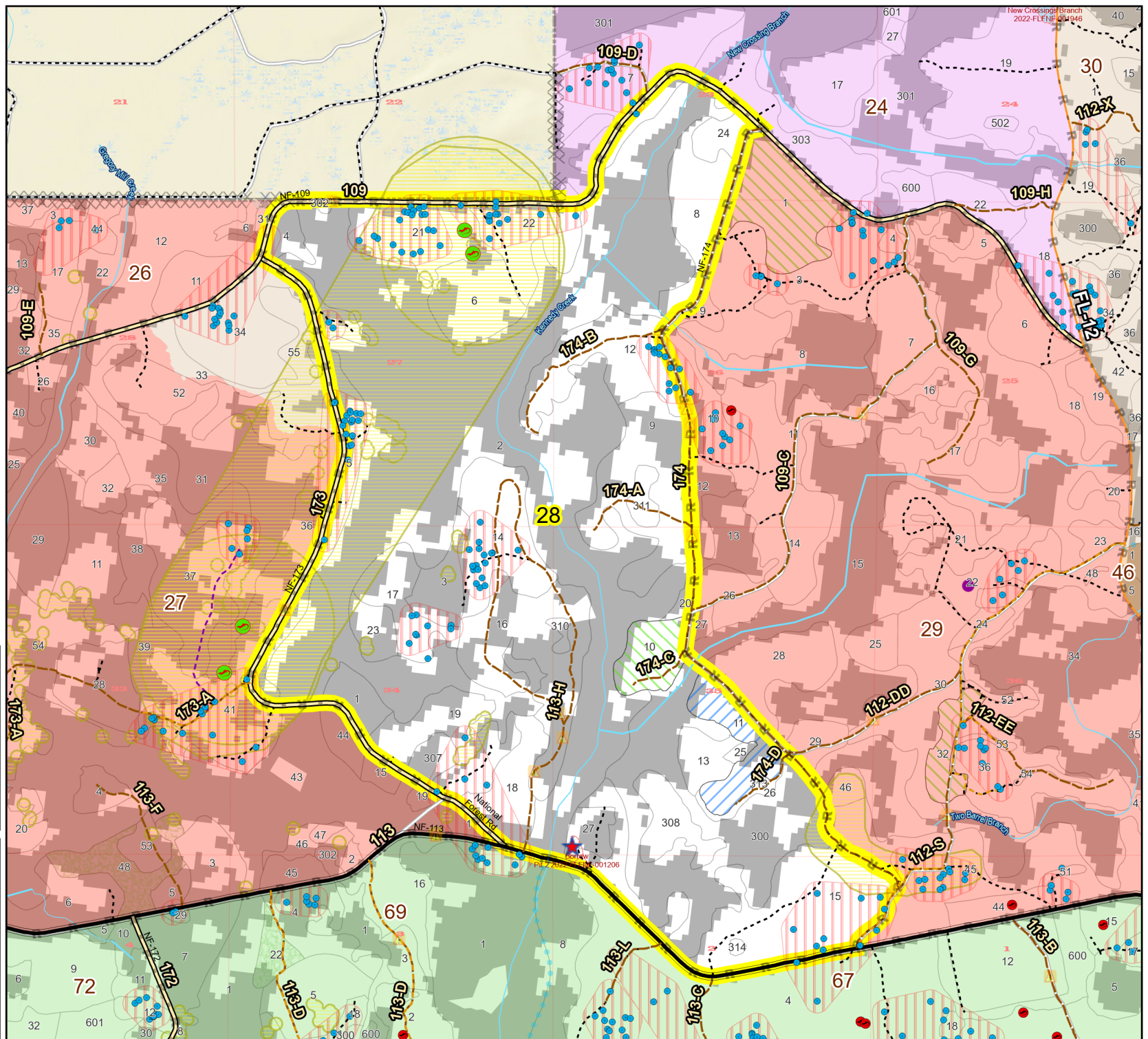
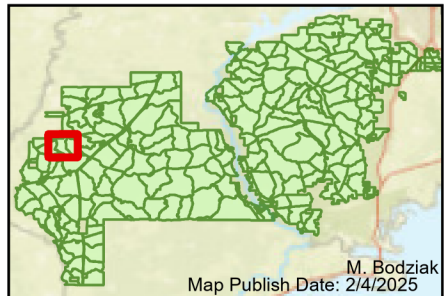


Prescribe Burn Map
 District: Apalachicola
 Apalachicola National Forest
Burn Unit 28
 1835 FACTS Reportable Acres
 877 Burnable Acres
 Last Burned: 1/24/2016

- RCW Tree
- RCW Cluster
- Disturbance Zone
- Active FS Pond
- Salamander Potential Pond
- ★ Apiary
- Road Erosion
- Dozer Line
- R** Control Line Road
- Other Line
- ⋯ Natural Feature Line
- Private Boundary Line
- access by foot
- access by utv
- Young Longleaf
- Sapling Pines
- Savannah

- Burn Unit Info**
- Burn Unit
 - Private
 - USFS No Burn
- Burnable Area**
- Did not burn last 27 yrs
 - Burned during last 27 yrs
- Yrs. Last Burn**
- 0 - 1
 - > 1 - 2
 - > 2 - 3
 - > 3 - 4
 - > 4 - 5
 - > 5 - 10
 - > 10 - 15
 - > 15 - 20
 - > 20 - 25



BurnDate _____ Tr.Winds _____ Temp _____ Mix Ht. _____
 RH _____ Disp. Index _____ Wind _____ KBDI _____
 DSR _____ RX Position _____ Burn Boss _____