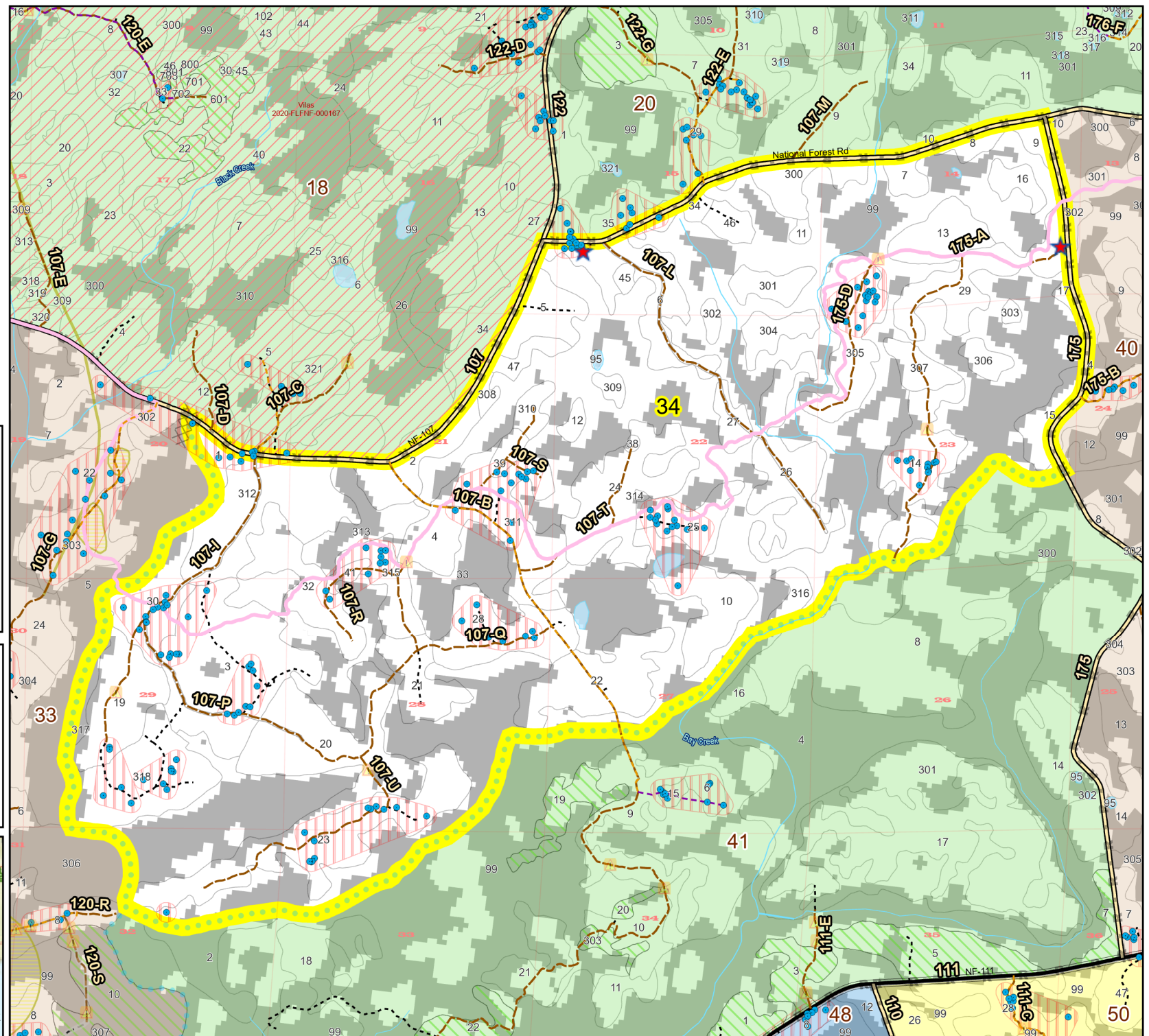
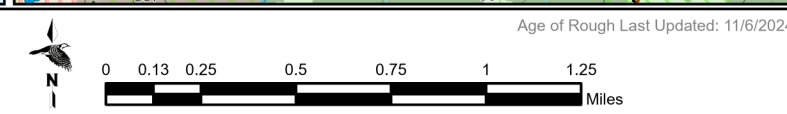
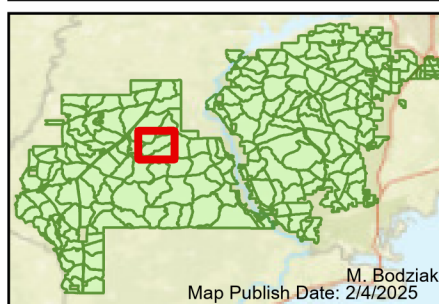


Prescribe Burn Map
 District: Apalachicola
 Apalachicola National Forest
Burn Unit 34
 3942 FACTS Reportable Acres
 2939 Burnable Acres
 Last Burned: 2/2/2023



- RCW Tree
- RCW Cluster
- No Disturbance Zone
- ★ Apiary
- Road Erosion
- Trails
- Dozer Line
- Control Line Road
- Other Line
- Natural Feature Line
- access by foot
- access by utv
- Sapling Pines

| Burn Unit Info | | Yrs. Last Burn | |
|--|--|--|--|
| Burn Unit | | 0 - 1 | > 1 - 2 |
| Private | | > 2 - 3 | > 3 - 4 |
| USFS No Burn | | > 4 - 5 | > 5 - 10 |
| Burnable Area | | > 10 - 15 | > 15 - 20 |
| Did not burn last 27 yrs | | > 20 - 25 | |
| Burned during last 27 yrs | | | |



| | | | |
|----------------|-------------------|-----------------|---------------|
| BurnDate _____ | Tr.Winds _____ | Temp _____ | Mix Ht. _____ |
| RH _____ | Disp. Index _____ | Wind _____ | KBDI _____ |
| DSR _____ | RX Position _____ | Burn Boss _____ | |