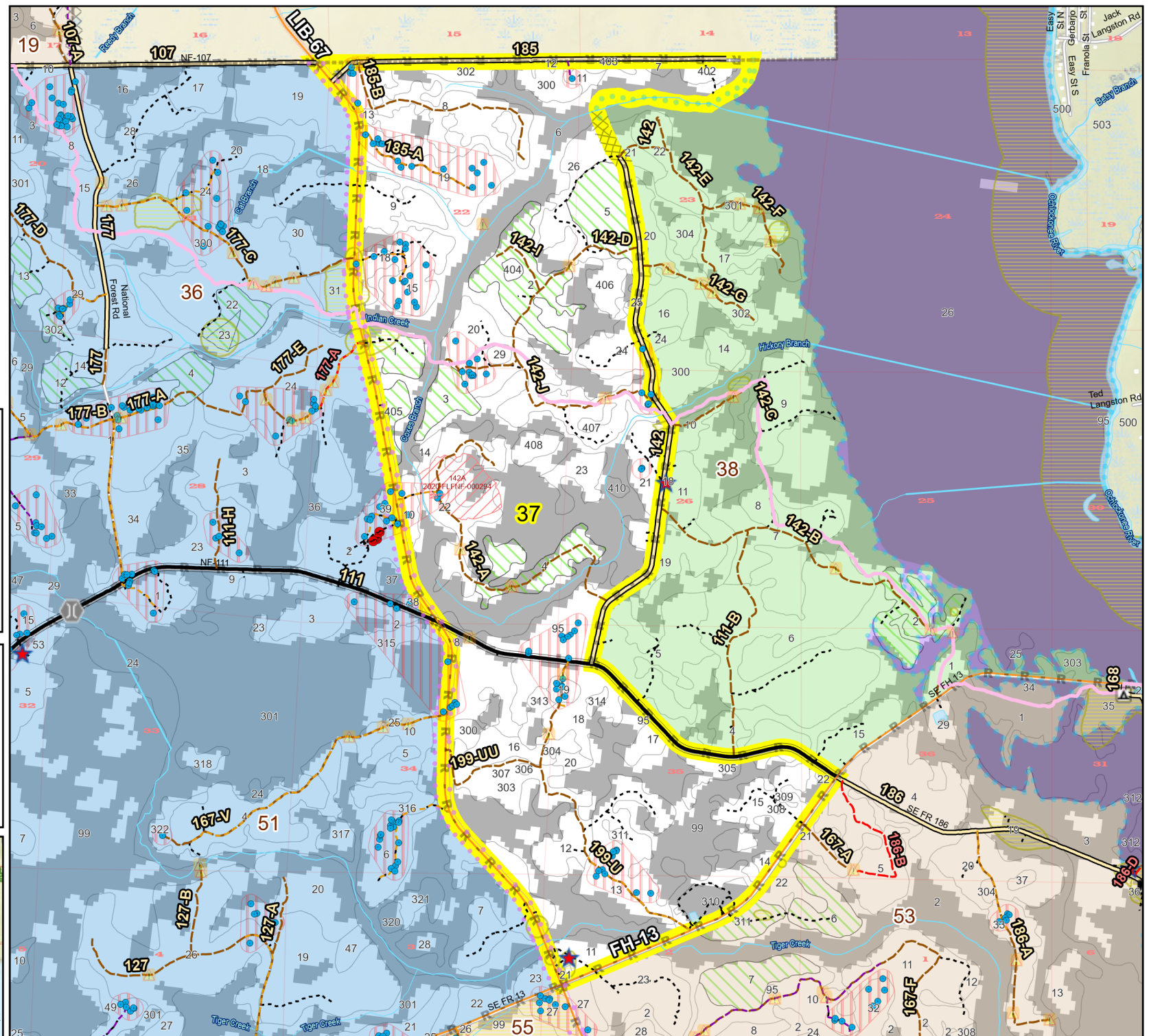
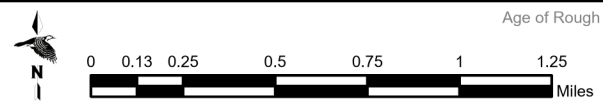
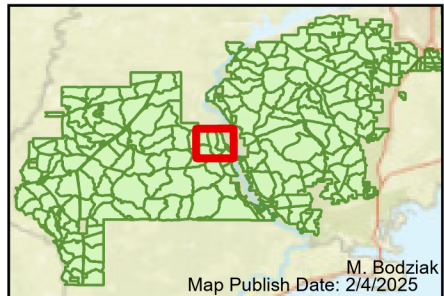


Prescribe Burn Map
 District: Apalachicola
 Apalachicola National Forest
Burn Unit 37
 2354 FACTS Reportable Acres
 1509 Burnable Acres
 Last Burned: 2/20/2024



- RCW Tree
- ▨ RCW Cluster
- ▨ No Disturbance Zone
- ★ Apiary
- ⚠ Road Erosion
- Trails
- ⊗ Dozer Line
- R Control Line
- Road
- Natural Feature Line
- Private Boundary Line
- access by foot
- access by utv
- ▨ Sapling Pines

Burn Unit Info		Yrs. Last Burn	
▨ Burn Unit		0 - 1	
▨ Private		> 1 - 2	
▨ USFS No Burn		> 2 - 3	
		> 3 - 4	
		> 4 - 5	
		> 5 - 10	
		> 10 - 15	
		> 15 - 20	
		> 20 - 25	



Age of Rough Last Updated: 11/6/2024

BurnDate	Tr.Winds	Temp	Mix Ht.
RH	Disp. Index	Wind	KBDI
DSR	RX Position	Burn Boss	