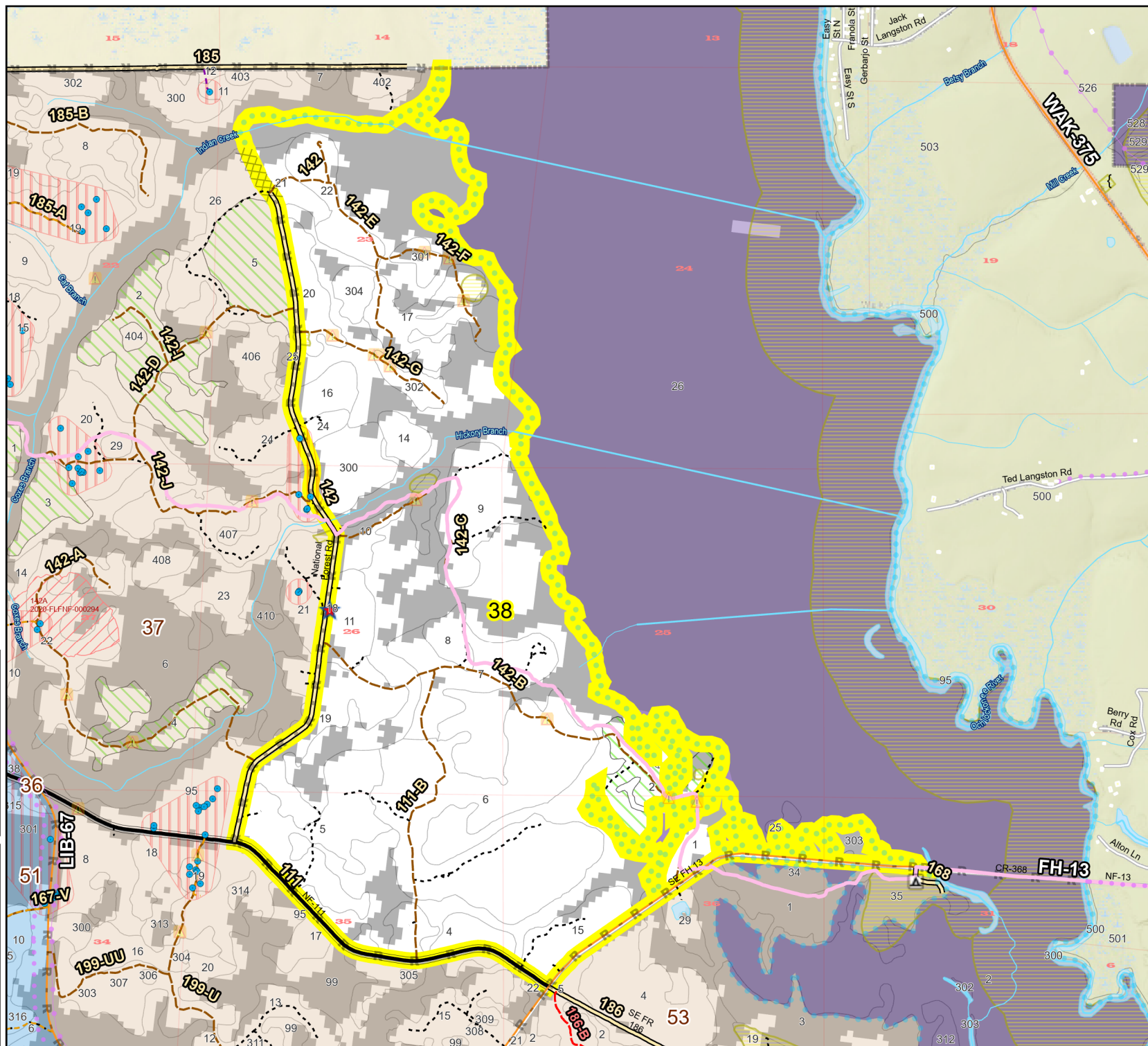
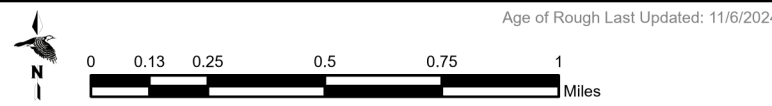
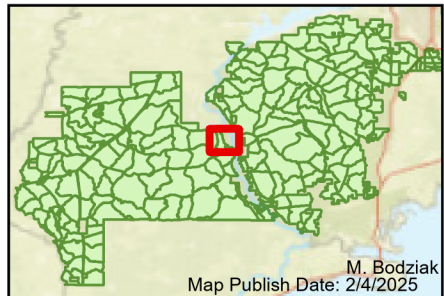


Prescribe Burn Map
 District: Apalachicola
 Apalachicola National Forest
Burn Unit 38
 1414 FACTS Reportable Acres
 979 Burnable Acres
 Last Burned:5/4/2023



- RCW Tree
- RCW Cluster
- No Disturbance Zone
- ★ Apiary
- Road Erosion
- Trails
- Dozer Line
- Control Line
- Road
- Natural Feature Line
- Private Boundary Line
- access by foot
- access by utv
- Sapling Pines

Burn Unit Info	Yrs. Last Burn
 Burn Unit	 0 - 1
 Private	 > 1 - 2
 USFS No Burn	 > 2 - 3
	 > 3 - 4
	 > 4 - 5
Burnable Area	 > 5 - 10
 Did not burn last 27 yrs	 > 10 - 15
 Burned during last 27 yrs	 > 15 - 20
	 > 20 - 25



Age of Rough Last Updated: 11/6/2024

BurnDate _____	Tr.Winds _____	Temp _____	Mix Ht. _____
RH _____	Disp. Index _____	Wind _____	KBDI _____
DSR _____	RX Position _____	Burn Boss _____	