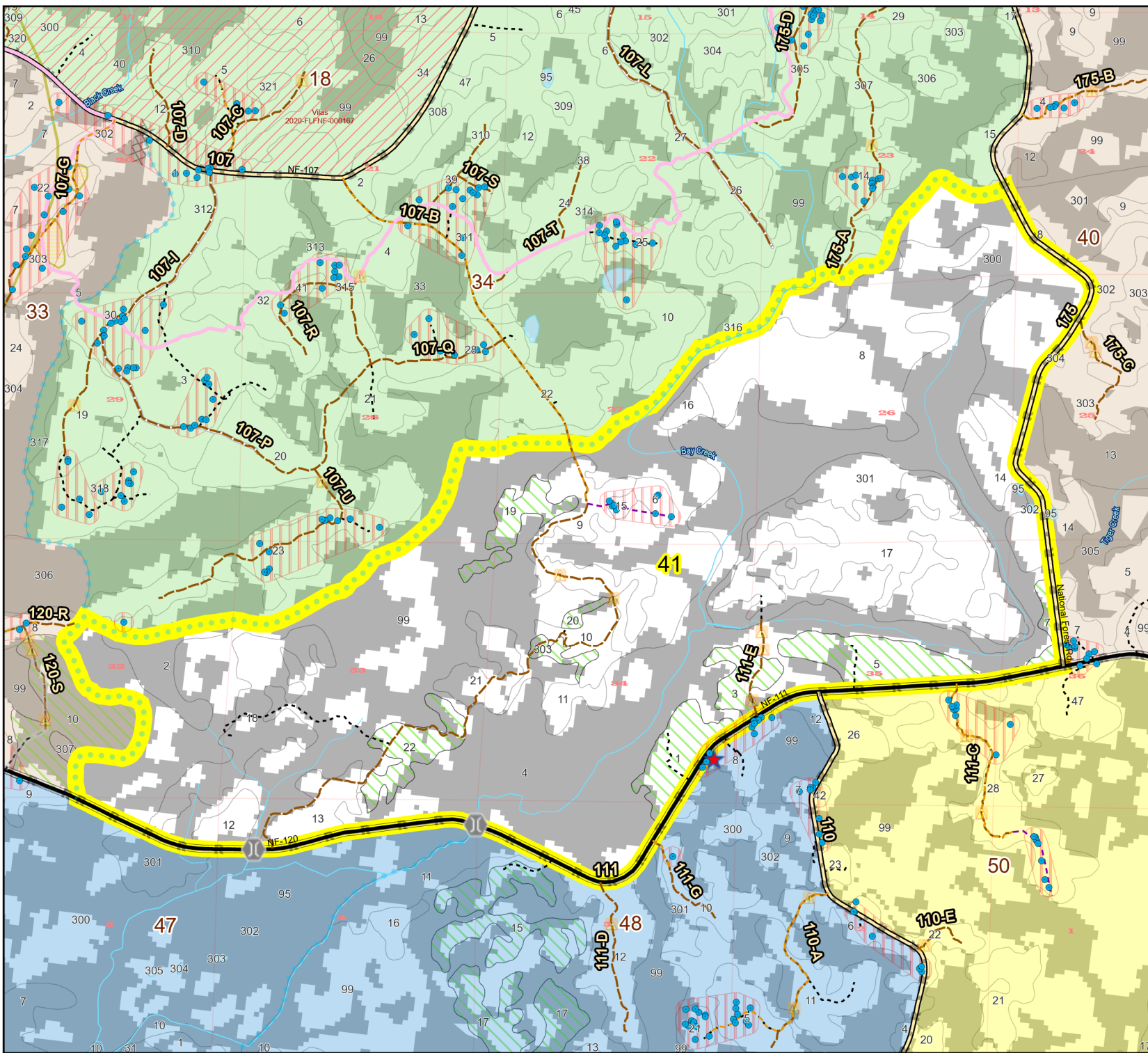


# Prescribe Burn Map

District: Apalachicola  
Apalachicola National Forest

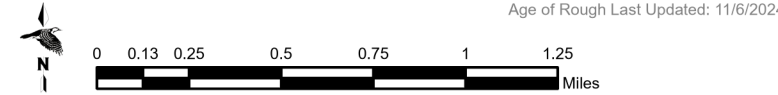
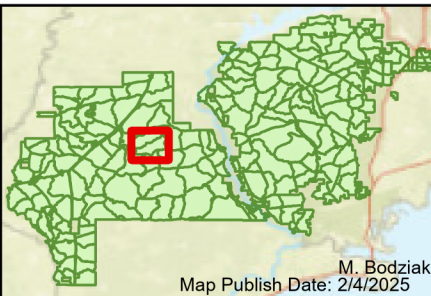
## Burn Unit 41

3325 FACTS Reportable Acres  
1561 Burnable Acres  
Last Burned: 2/2/2023



- RCW Tree
- ▨ RCW Cluster
- No
- Disturbance Zone
- ★ Apiary
- Road Erosion
- Trails
- Dozer Line
- Control Line
- Road
- Other Line
- Natural Feature Line
- access by foot
- access by utv
- Sapling Pines

Burn Unit Info		Yrs. Last Burn
<span style="background-color: yellow; border: 1px solid black;"> </span> Burn Unit		<span style="background-color: #f0f0f0;"> </span> 0 - 1
<span style="background-color: gray;"> </span> Private		<span style="background-color: #c8e6c9;"> </span> > 1 - 2
<span style="border: 1px dashed black;"> </span> USFS No Burn		<span style="background-color: #fff9c4;"> </span> > 2 - 3
		<span style="background-color: #fff176;"> </span> > 3 - 4
		<span style="background-color: #ffe0b2;"> </span> > 4 - 5
		<span style="background-color: #ffcdd2;"> </span> > 5 - 10
		<span style="background-color: #e1bee7;"> </span> > 10 - 15
		<span style="background-color: #d1c4e9;"> </span> > 15 - 20
		<span style="background-color: #b39ddb;"> </span> > 20 - 25



Age of Rough Last Updated: 11/6/2024

BurnDate	Tr.Winds	Temp	Mix Ht.
RH	Disp. Index	Wind	KBDI
DSR	RX Position	Burn Boss	