

Prescribe Burn Map

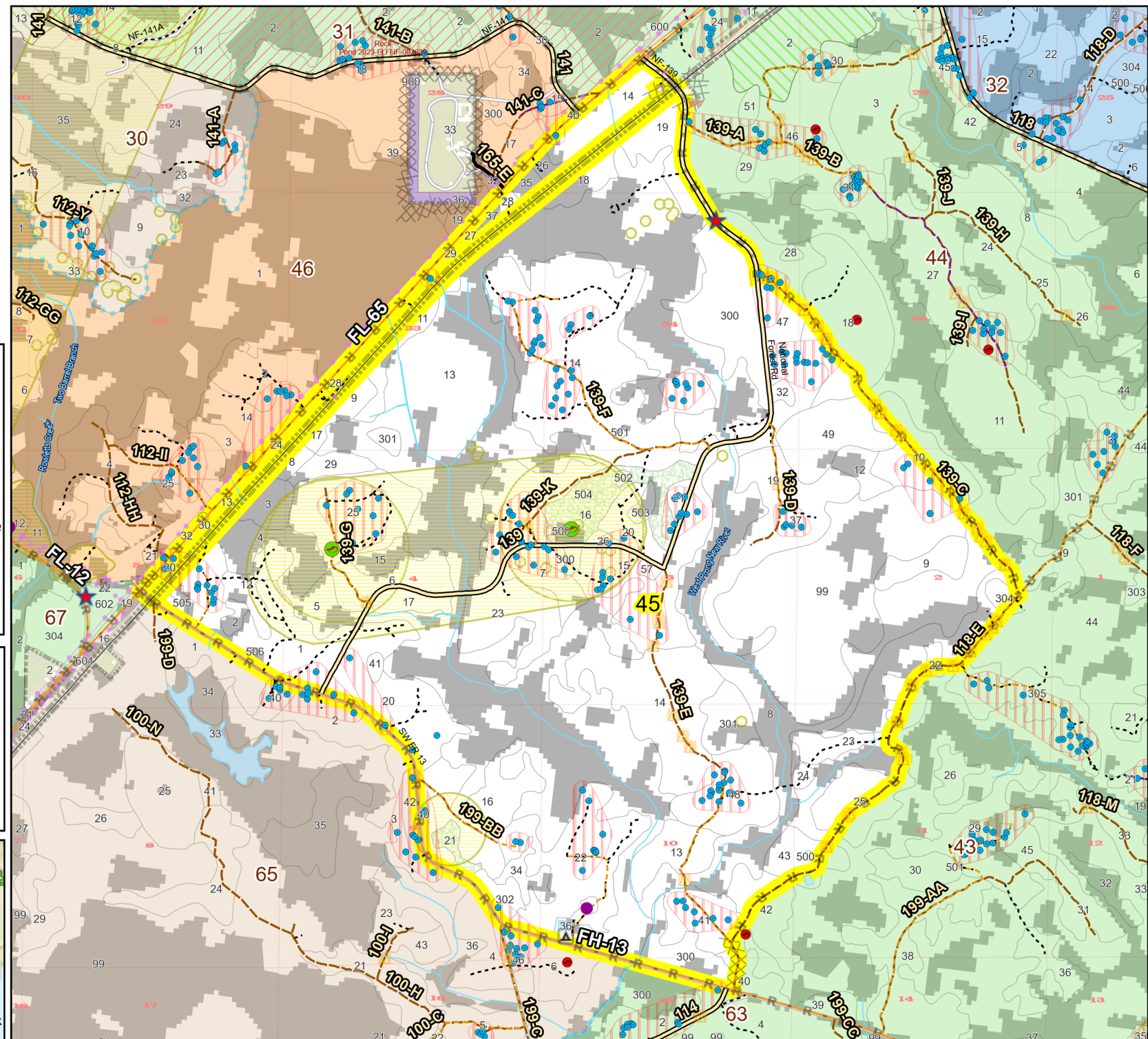
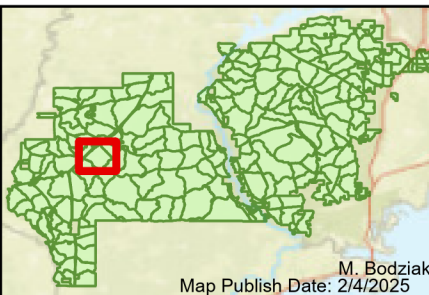
District: Apalachicola
Apalachicola National Forest

Burn Unit 45

4082 FACTS Reportable Acres
3072 Burnable Acres
Last Burned: 1/27/2023

- RCW Tree
- RCW Cluster
- Disturbance Zone
- Active FS
- Pond
- Flatwood
- Salamander Potential Pond
- Apiary
- Road Erosion
- Building Footprints
- Dozer Line
- Control Line Road
- Natural Feature Line
- Private Boundary Line
- access by foot
- access by utv
- Sapling Pines
- Savannah

- Burn Unit Info**
- Burn Unit
 - Private
 - USFS No Burn
- Burnable Area**
- Did not burn last 27 yrs
 - Burned during last 27 yrs
- | Yrs. Last Burn | Color |
|----------------|-------|
| 0 - 1 | |
| > 1 - 2 | |
| > 2 - 3 | |
| > 3 - 4 | |
| > 4 - 5 | |
| > 5 - 10 | |
| > 10 - 15 | |
| > 15 - 20 | |
| > 20 - 25 | |



Age of Rough Last Updated: 11/6/2024

BurnDate	Tr.Winds	Temp	Mix Ht.
RH	Disp. Index	Wind	KBDI
DSR	RX Position	Burn Boss	

