

Prescribe Burn Map

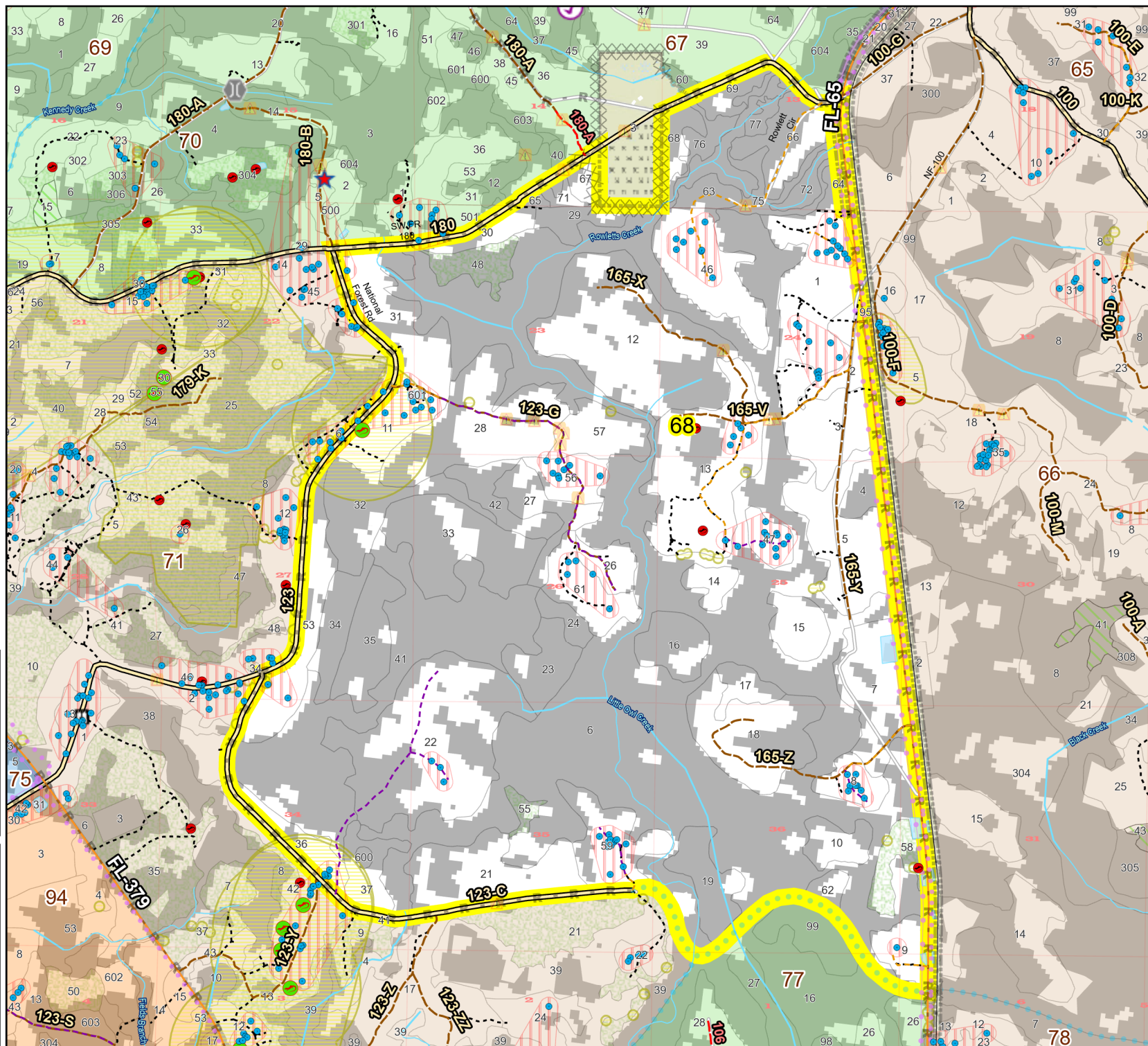
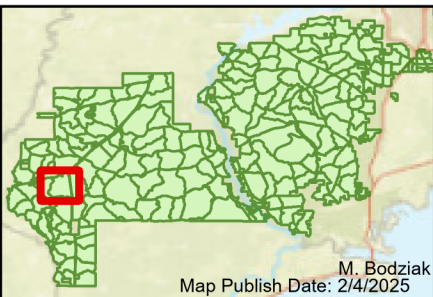
District: Apalachicola
Apalachicola National Forest

Burn Unit 68

4513 FACTS Reportable Acres
1898 Burnable Acres
Last Burned: 5/31/2023

- RCW Tree
- RCW Cluster
- Disturbance Zone
- Active FS
- Pond
- Flatwood
- Salamander
- Potential Pond
- ★ Apiary
- Road Erosion
- Dozer Line
- Control Line
- Road
- Natural Feature Line
- Private
- Boundary Line
- access by foot
- access by utv
- Sapling Pines
- Savannah

- | Burn Unit Info | |
|--|--|
| Burn Unit | Yrs. Last Burn |
| Private | 0 - 1 |
| USFS No Burn | > 1 - 2 |
| | > 2 - 3 |
| | > 3 - 4 |
| | > 4 - 5 |
| | > 5 - 10 |
| | > 10 - 15 |
| | > 15 - 20 |
| | > 20 - 25 |



Age of Rough Last Updated: 11/6/2024

BurnDate	Tr.Winds	Temp	Mix Ht.
RH	Disp. Index	Wind	KBDI
DSR	RX Position	Burn Boss	

