

# Prescribe Burn Map

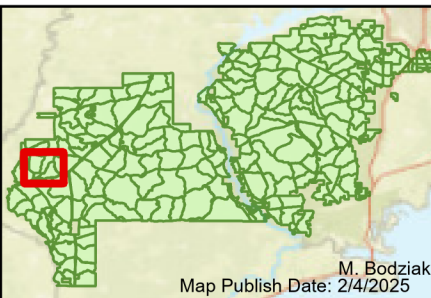
District: Apalachicola  
Apalachicola National Forest

## Burn Unit 69

1908 FACTS Reportable Acres  
839 Burnable Acres  
Last Burned: 5/4/2023

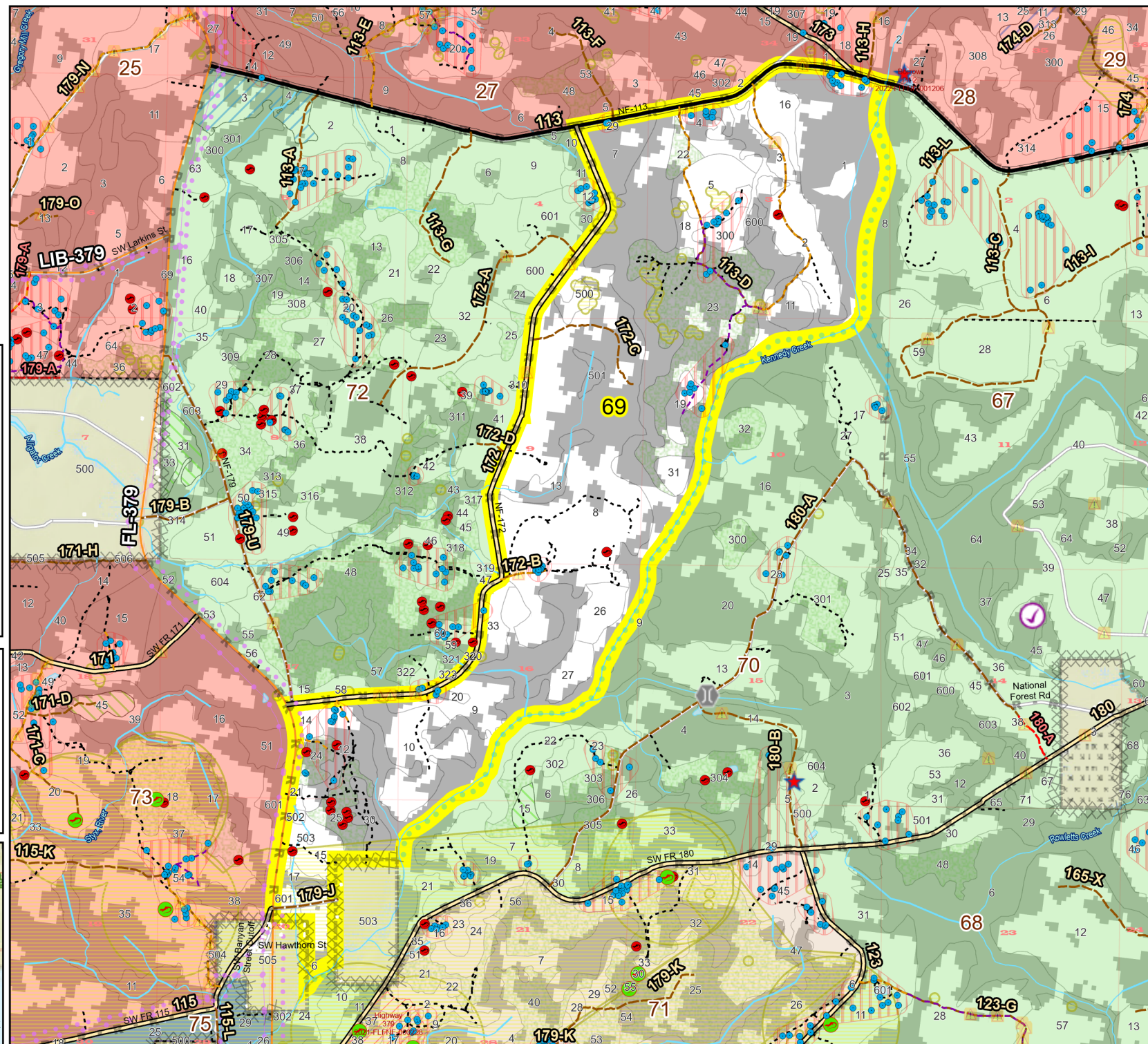
- RCW Tree
- ▨ RCW Cluster
- No Disturbance Zone
- Flatwood
- Salamander
- Potential Pond
- ★ Apiary
- ⊠ Road Erosion
- ⊠ Dozer Line
- Control Line
- Road
- Other Line
- Natural Feature Line
- Private
- Boundary Line
- access by foot
- - - access by utv
- ▨ Young Longleaf
- ▨ Sapling Pines
- ▨ Savannah

- ### Burn Unit Info
- ▨ Burn Unit
  - ▨ Private
  - ▨ USFS No Burn
- ### Burnable Area
- ▨ Did not burn last 27 yrs
  - ▨ Burned during last 27 yrs
- | Yrs. Last Burn |
|----------------|
| 0 - 1          |
| > 1 - 2        |
| > 2 - 3        |
| > 3 - 4        |
| > 4 - 5        |
| > 5 - 10       |
| > 10 - 15      |
| > 15 - 20      |
| > 20 - 25      |



M. Bodziak

Map Publish Date: 2/4/2025



Age of Rough Last Updated: 11/6/2024

BurnDate	Tr.Winds	Temp	Mix Ht.
RH	Disp. Index	Wind	KBDI
DSR	RX Position	Burn Boss	

