

Prescribe Burn Map

District: Apalachicola
Apalachicola National Forest

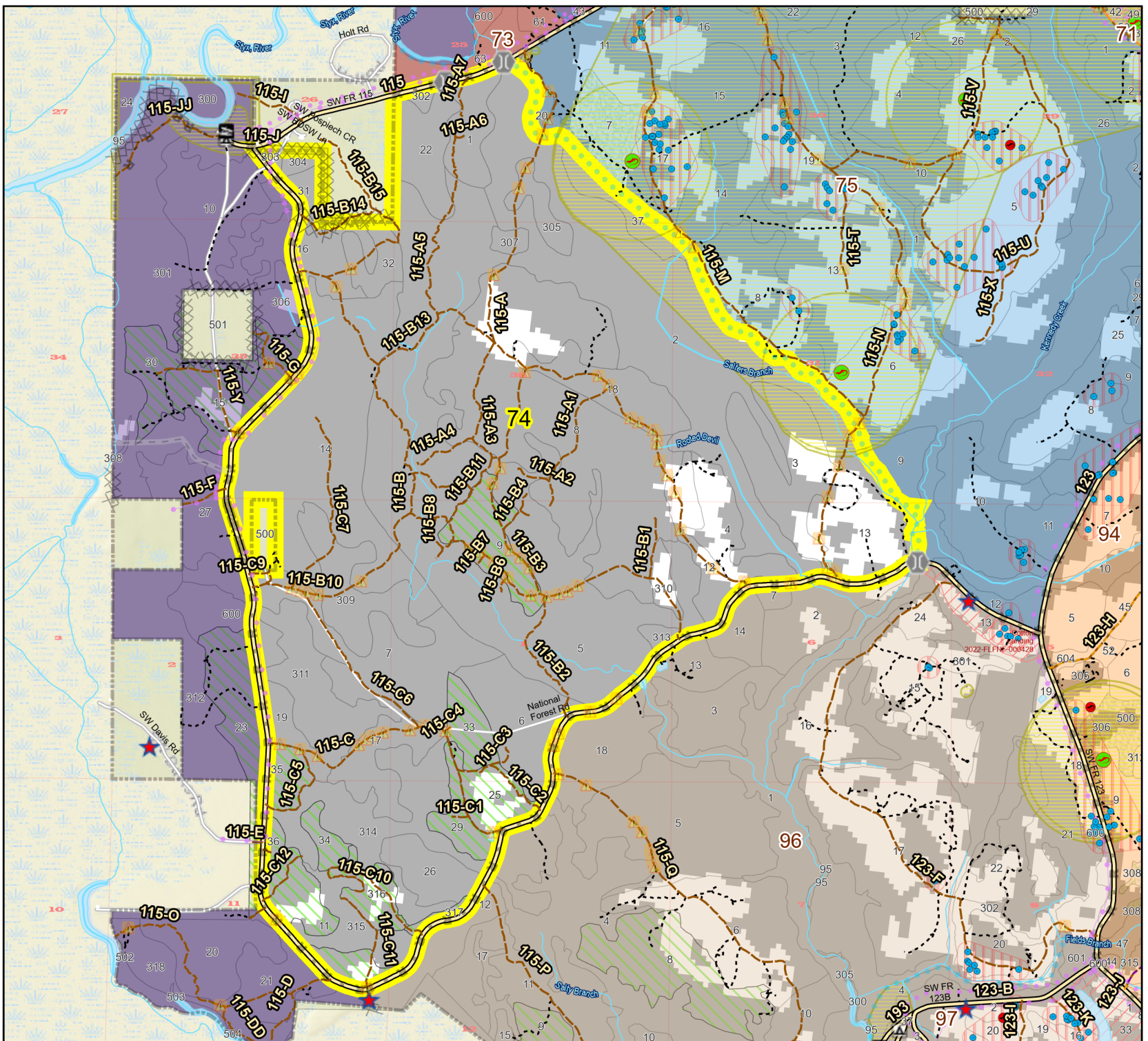
Burn Unit 74

2771 FACTS Reportable Acres
180 Burnable Acres
Last Burned: 1/28/2006

RCW Tree	Other Line
RCW Cluster	Natural Feature Line
No Disturbance Zone	Private Boundary Line
Disturbance Zone	Boundary Line
Apiary	access by foot
Road Erosion	access by utv
Dozer Line	Sapling Pines
Control Line	Savannah
Road	

Burn Unit Info	Yrs. Last Burn
Burn Unit	0 - 1
Private	> 1 - 2
USFS No Burn	> 2 - 3
	> 3 - 4
	> 4 - 5
Burnable Area	> 5 - 10
Did not burn last 27 yrs	> 10 - 15
Burned during last 27 yrs	> 15 - 20
	> 20 - 25

M. Bodziak
Map Publish Date: 2/4/2025



Age of Rough Last Updated: 11/6/2024

BurnDate _____	Tr.Winds _____	Temp _____	Mix Ht. _____
RH _____	Disp. Index _____	Wind _____	KBDI _____
DSR _____	RX Position _____	Burn Boss _____	

