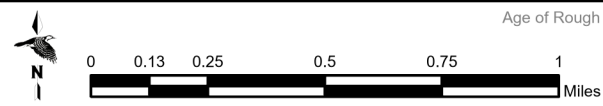
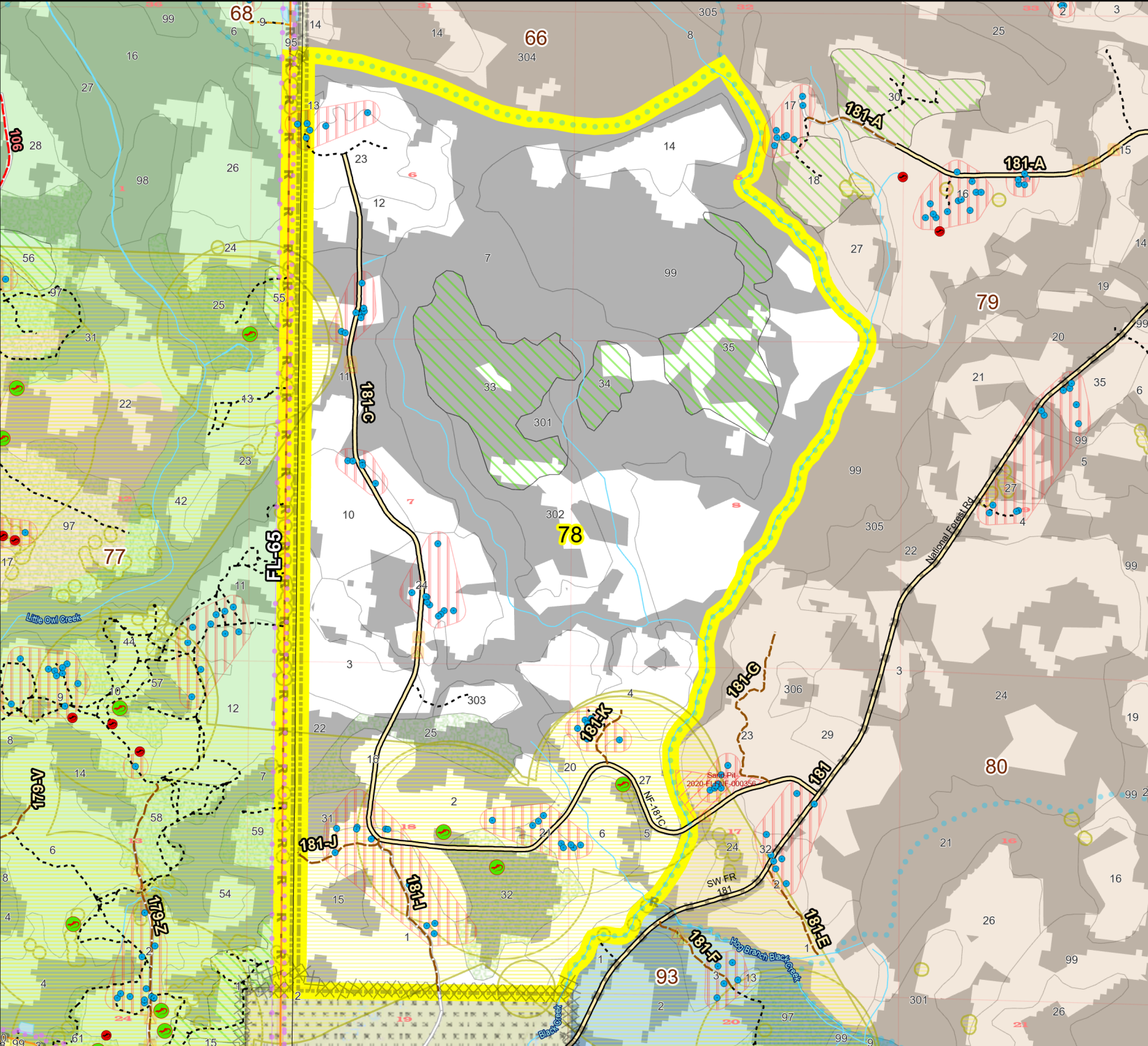
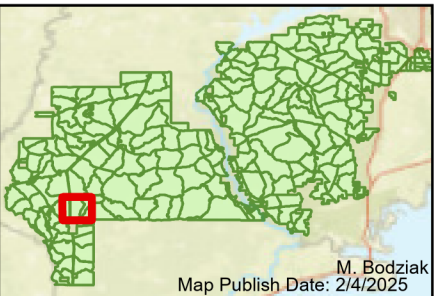


Prescribe Burn Map
 District: Apalachicola
 Apalachicola National Forest
Burn Unit 78
 2425 FACTS Reportable Acres
 1137 Burnable Acres
 Last Burned: 4/2/2024

- RCW Tree
- RCW Cluster
- No Disturbance Zone
- Active FS Pond
- Flatwood
- Salamander
- Potential Pond
- Road Erosion
- Dozer Line
- Control Line
- Road
- Other Line
- Natural
- Feature Line
- Private
- Boundary Line
- access by utv
- Sapling Pines
- Savannah

Burn Unit Info		Yrs. Last Burn	
 Burn Unit		 0 - 1	 > 1 - 2
 Private		 > 2 - 3	 > 3 - 4
 USFS No Burn		 > 4 - 5	 > 5 - 10
Burnable Area		 > 10 - 15	 > 15 - 20
 Did not burn last 27 yrs		 > 20 - 25	
 Burned during last 27 yrs			



Age of Rough Last Updated: 11/6/2024

BurnDate _____	Tr.Winds _____	Temp _____	Mix Ht. _____
RH _____	Disp. Index _____	Wind _____	KBDI _____
DSR _____	RX Position _____	Burn Boss _____	