

Prescribe Burn Map

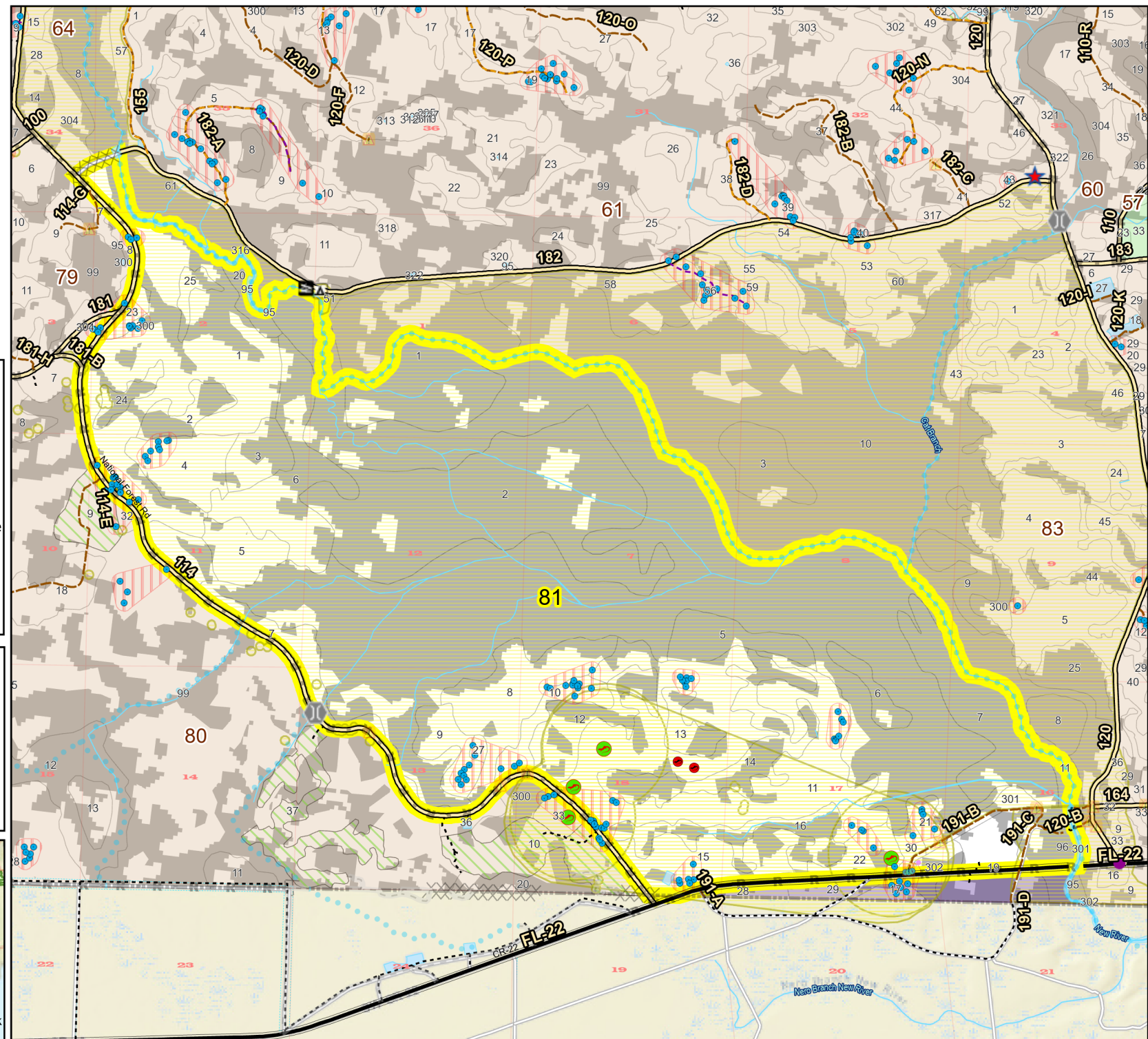
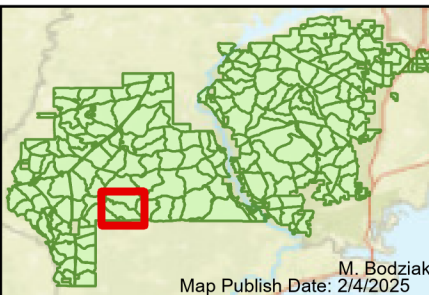
District: Apalachicola
Apalachicola National Forest

Burn Unit 81

4512 FACTS Reportable Acres
1674 Burnable Acres
Last Burned: 4/5/2024

- RCW Tree
- RCW Cluster
- Disturbance Zone
- Active FS Pond
- Flatwood
- Salamander
- Potential Pond
- ★ Apiary
- Road Erosion
- Dozer Line
- Control Line Road
- Other Line
- Natural Feature Line
- Private Boundary Line
- access by foot
- access by utv
- Sapling Pines

- Burn Unit Info**
- Burn Unit
 - Private
 - USFS No Burn
- Burnable Area**
- Did not burn last 27 yrs
 - Burned during last 27 yrs
- | Yrs. Last Burn | Color |
|----------------|--|
| 0 - 1 | |
| > 1 - 2 | |
| > 2 - 3 | |
| > 3 - 4 | |
| > 4 - 5 | |
| > 5 - 10 | |
| > 10 - 15 | |
| > 15 - 20 | |
| > 20 - 25 | |



Age of Rough Last Updated: 11/6/2024



BurnDate _____	Tr.Winds _____	Temp _____	Mix Ht. _____
RH _____	Disp. Index _____	Wind _____	KBDI _____
DSR _____	RX Position _____	Burn Boss _____	

