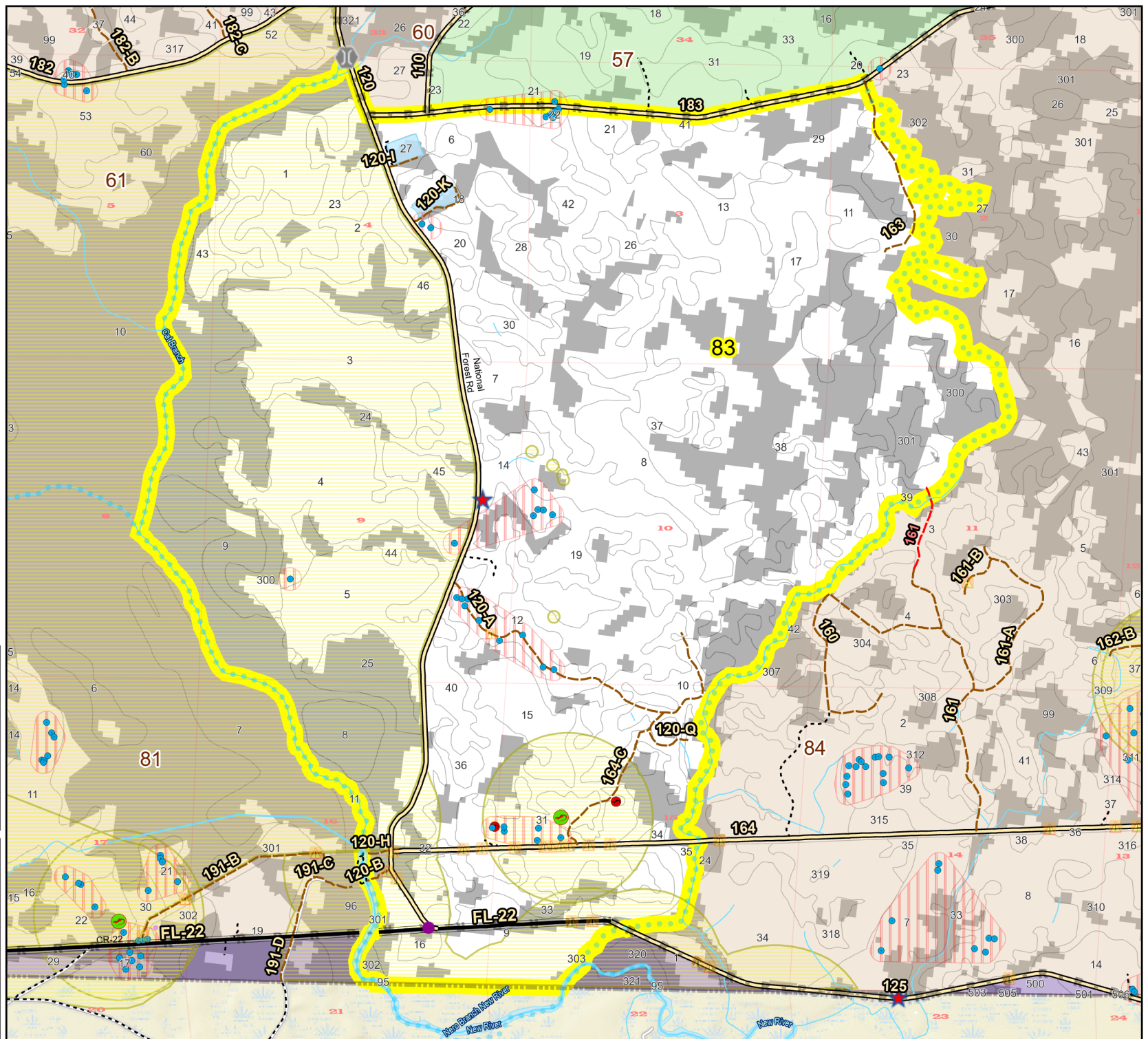
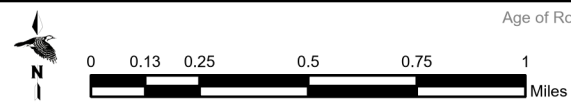
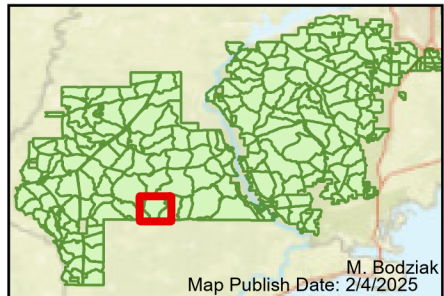


Prescribe Burn Map
 District: Apalachicola
 Apalachicola National Forest
Burn Unit 83
 3726 FACTS Reportable Acres
 2603 Burnable Acres
 Last Burned: 4/5/2024



- RCW Tree
- ★ Apiary
- RCW Cluster
- Road Erosion
- No Disturbance Zone
- Control Line
- Active FS Pond
- Road
- Flatwood
- Natural Feature Line
- Salamander Potential Pond
- Private Boundary Line

Burn Unit Info		Yrs. Last Burn	
 Burn Unit		 0 - 1	 > 1 - 2
 Private		 > 2 - 3	 > 3 - 4
 USFS No Burn		 > 4 - 5	 > 5 - 10
Burnable Area		 > 10 - 15	 > 15 - 20
 Did not burn last 27 yrs		 > 20 - 25	
 Burned during last 27 yrs			



Age of Rough Last Updated: 11/6/2024

BurnDate	Tr.Winds	Temp	Mix Ht.
RH	Disp. Index	Wind	KBDI
DSR	RX Position	Burn Boss	