

Prescribe Burn Map

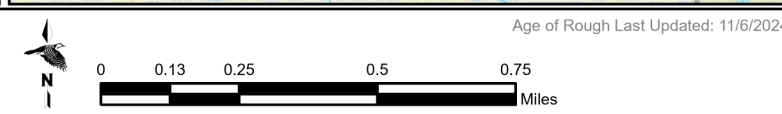
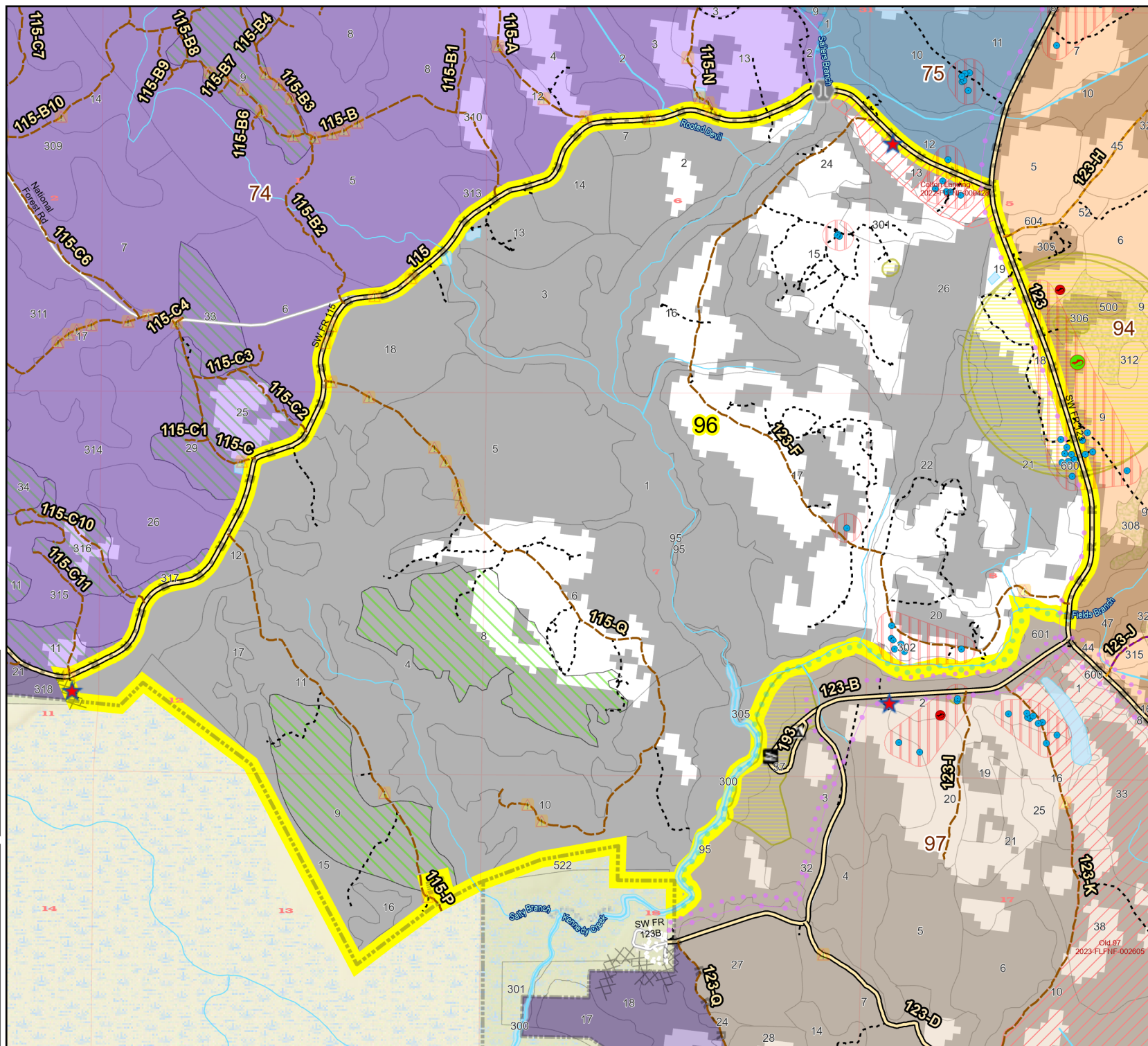
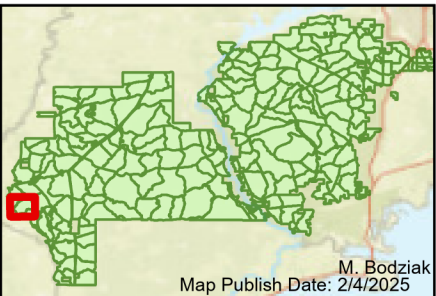
District: Apalachicola
Apalachicola National Forest

Burn Unit 96

2185 FACTS Reportable Acres
483 Burnable Acres
Last Burned: 2/1/2024

- RCW Tree
- RCW Cluster
- No Disturbance Zone
- Apiary
- Road Erosion
- Dozer Line
- Control Line
- Road
- Natural Feature Line
- Private Boundary Line
- access by foot
- access by utv
- Sapling Pines
- Savannah

Burn Unit Info		Yrs. Last Burn	
	Burn Unit		0 - 1
	Private		> 1 - 2
	USFS No Burn		> 2 - 3
			> 3 - 4
			> 4 - 5
			> 5 - 10
			> 10 - 15
			> 15 - 20
			> 20 - 25



Age of Rough Last Updated: 11/6/2024

BurnDate	Tr.Winds	Temp	Mix Ht.
RH	Disp. Index	Wind	KBDI
DSR	RX Position	Burn Boss	