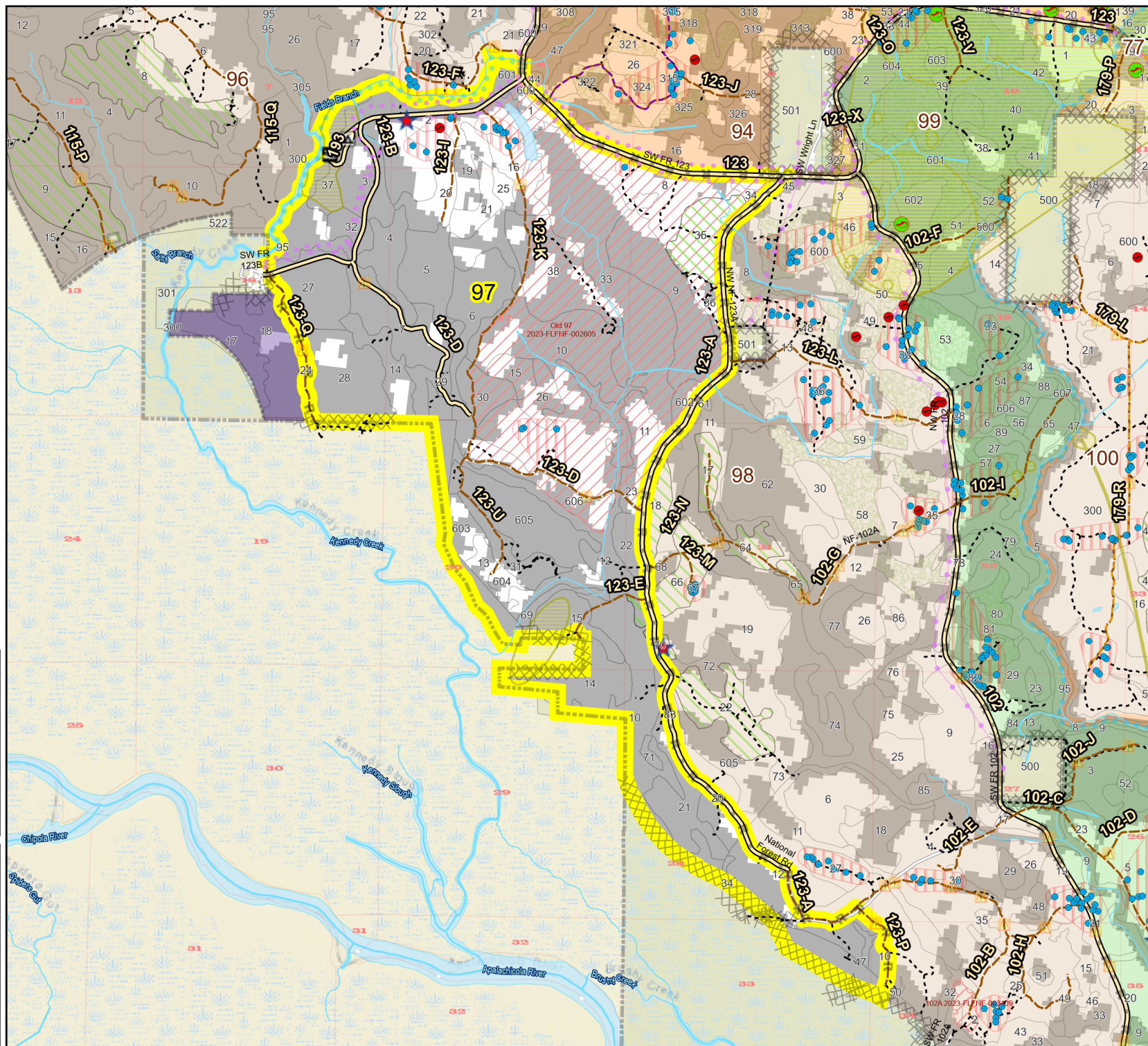
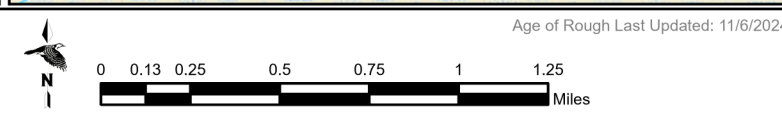
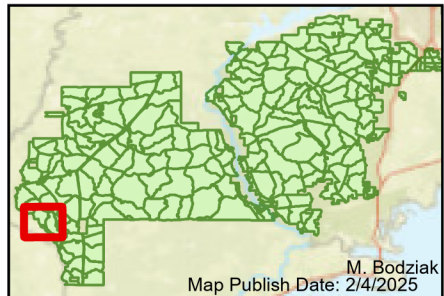


Prescribe Burn Map
 District: Apalachicola
 Apalachicola National Forest
Burn Unit 97
 2109 FACTS Reportable Acres
 520 Burnable Acres
 Last Burned: 2/21/2024



- RCW Tree
- ▨ RCW Cluster
- No Disturbance Zone
- Flatwood
- Salamander Potential Pond
- ★ Apiary
- ▨ Road Erosion
- ✕ Dozer Line
- R Control Line Road
- Natural Feature Line
- Private Boundary Line
- access by foot
- access by utv
- ▨ Sapling Pines
- ▨ Savannah

Burn Unit Info		Yrs. Last Burn	
▨ Burn Unit	▨ 0 - 1	▨ > 1 - 2	▨ > 2 - 3
▨ Private	▨ > 3 - 4	▨ > 4 - 5	▨ > 5 - 10
▨ USFS No Burn	▨ > 10 - 15	▨ > 15 - 20	▨ > 20 - 25
Burnable Area			
▨ Did not burn last 27 yrs	▨ Burned during last 27 yrs		



Age of Rough Last Updated: 11/6/2024

BurnDate	Tr.Winds	Temp	Mix Ht.
RH	Disp. Index	Wind	KBDI
DSR	RX Position	Burn Boss	