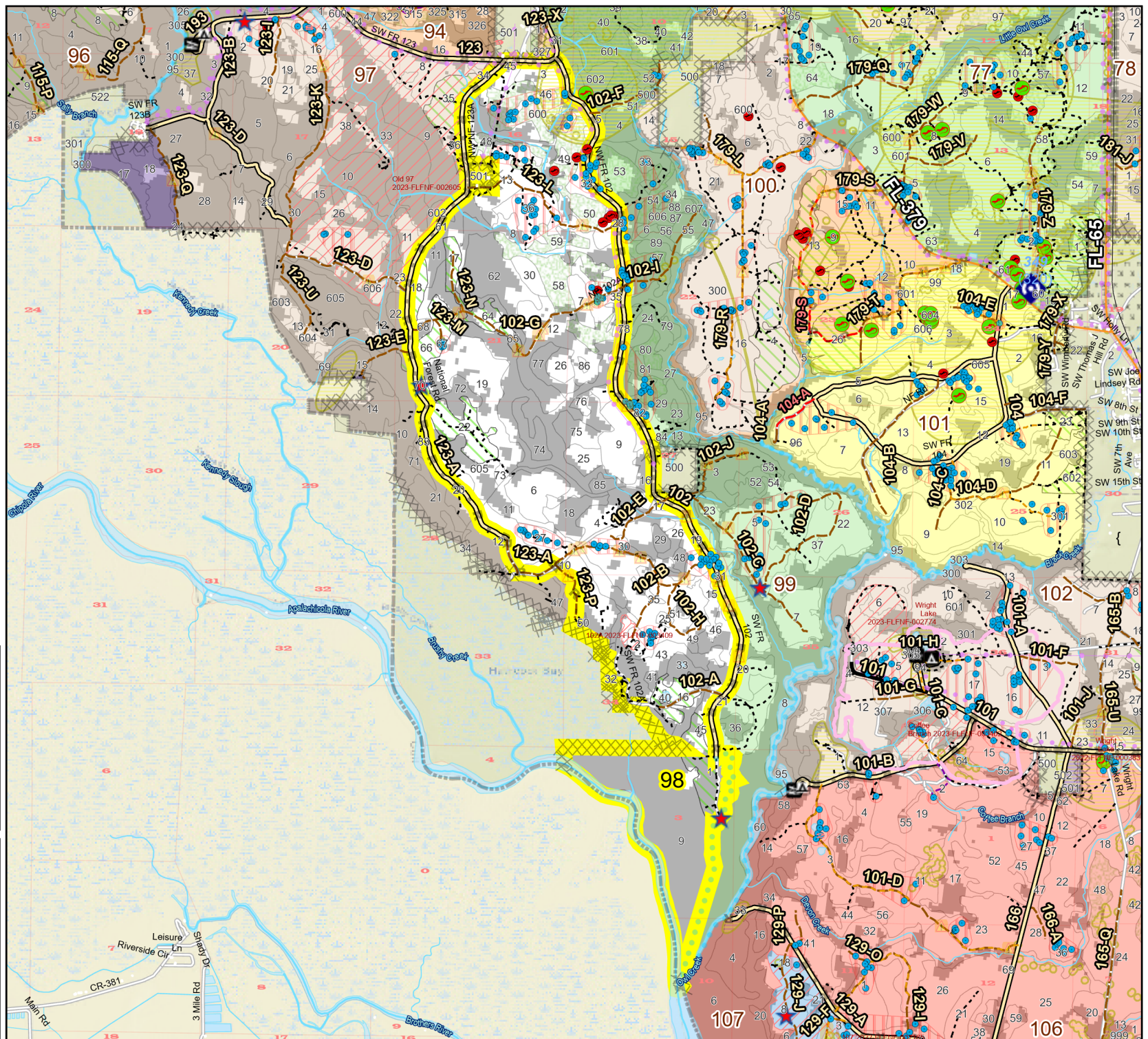
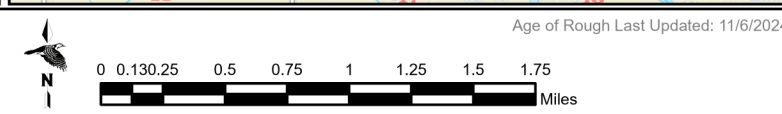
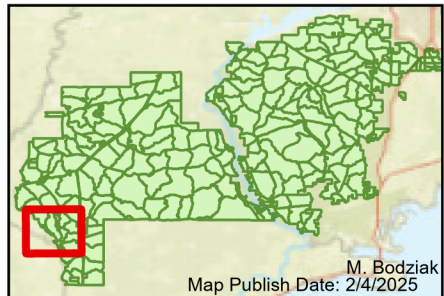


Prescribe Burn Map
 District: Apalachicola
 Apalachicola National Forest
Burn Unit 98
 2815 FACTS Reportable Acres
 1487 Burnable Acres
 Last Burned: 2/22/2024



- RCW Tree
- RCW Cluster
- No Disturbance Zone
- Flatwood
- Salamander
- Potential Pond
- ★ Apiary
- ▲ Road Erosion
- Trails
- X Dozer Line
- R Control Line Road
- Other Line
- Natural Feature Line
- Private Boundary Line
- - - access by foot
- - - access by utv
- ▨ Sapling Pines
- ▨ Savannah

Burn Unit Info		Yrs. Last Burned	
■	Burn Unit	■	0 - 1
■	Private	■	> 1 - 2
■	USFS No Burn	■	> 2 - 3
		■	> 3 - 4
		■	> 4 - 5
		■	> 5 - 10
		■	> 10 - 15
		■	> 15 - 20
		■	> 20 - 25



Age of Rough Last Updated: 11/6/2024

BurnDate	Tr.Winds	Temp	Mix Ht.
RH	Disp. Index	Wind	KBDI
DSR	RX Position	Burn Boss	