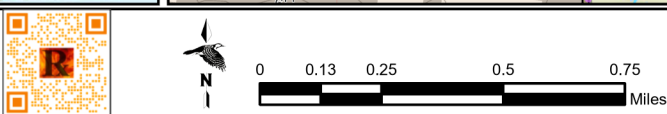
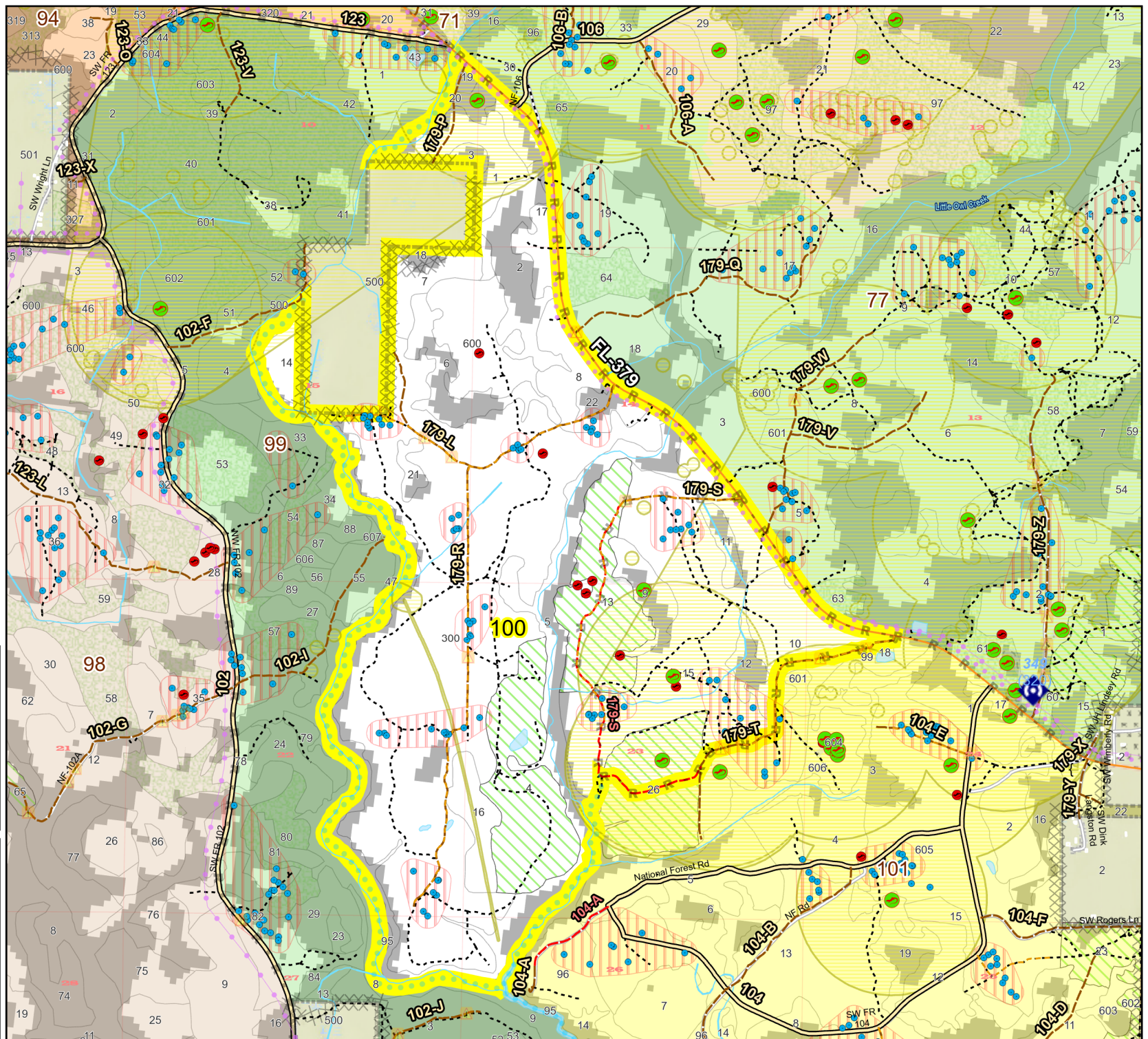
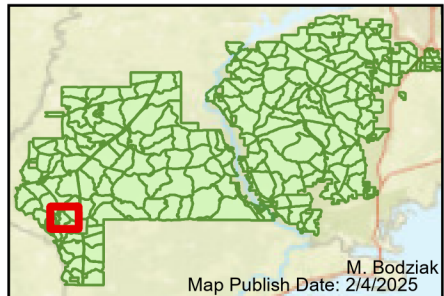


Prescribe Burn Map  
 District: Apalachicola  
 Apalachicola National Forest  
**Burn Unit 100**  
 1393 FACTS Reportable Acres  
 1160 Burnable Acres  
 Last Burned: 3/10/2020

- RCW Tree
- RCW Cluster
- Disturbance Zone
- Active FS
- Pond
- Flatwood
- Salamander
- Potential Pond
- Road Erosion
- Dozer Line
- Control Line
- Road
- Other Line
- Natural Feature Line
- Private Boundary Line
- access by utv
- Sapling Pines
- Savannah

- Burn Unit Info**
- Burn Unit
  - Private
  - USFS No Burn
- Burnable Area**
- Did not burn last 27 yrs
  - Burned during last 27 yrs
- Yrs. Last Burn**
- 0 - 1
  - > 1 - 2
  - > 2 - 3
  - > 3 - 4
  - > 4 - 5
  - > 5 - 10
  - > 10 - 15
  - > 15 - 20
  - > 20 - 25



Age of Rough Last Updated: 11/6/2024

BurnDate	Tr.Winds	Temp	Mix Ht.
RH	Disp. Index	Wind	KBDI
DSR	RX Position	Burn Boss	