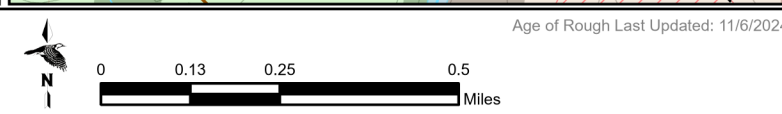
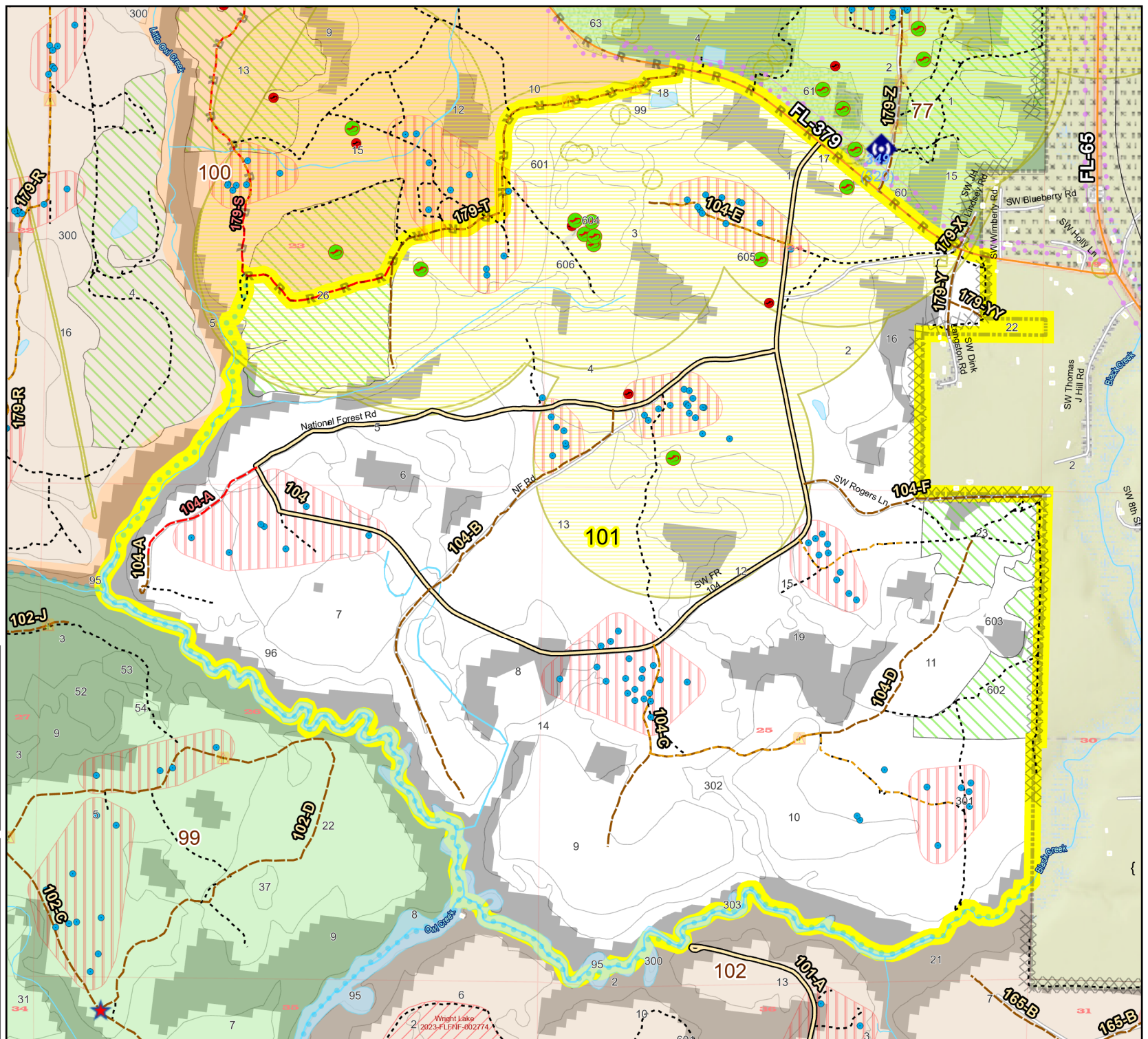
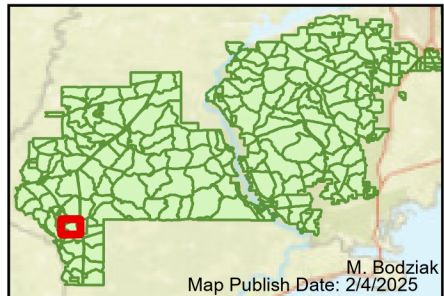


Prescribe Burn Map
 District: Apalachicola
 Apalachicola National Forest
Burn Unit 101
 1467 FACTS Reportable Acres
 1261 Burnable Acres
 Last Burned: 3/8/2021

- RCW Tree
- RCW Cluster
- Disturbance Zone
- Active FS
- Pond
- Salamander
- Apiary
- Road Erosion
- Dozer Line
- Control Line
- Road
- Other Line
- Natural
- Feature Line
- Private
- Boundary Line
- access by utv
- Sapling Pines
- Savannah

- Burn Unit Info**
- Burn Unit
 - Private
 - USFS No Burn
- Burnable Area**
- Did not burn last 27 yrs
 - Burned during last 27 yrs
- | Yrs. Last Burn | Color |
|----------------|-------|
| 0 - 1 | |
| > 1 - 2 | |
| > 2 - 3 | |
| > 3 - 4 | |
| > 4 - 5 | |
| > 5 - 10 | |
| > 10 - 15 | |
| > 15 - 20 | |
| > 20 - 25 | |



Age of Rough Last Updated: 11/6/2024

BurnDate _____	Tr.Winds _____	Temp _____	Mix Ht. _____
RH _____	Disp. Index _____	Wind _____	KBDI _____
DSR _____	RX Position _____	Burn Boss _____	