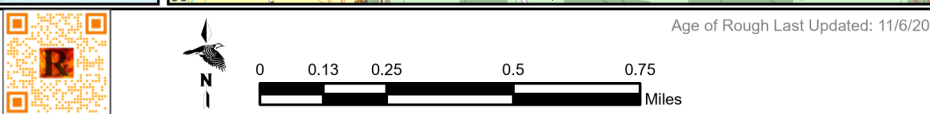
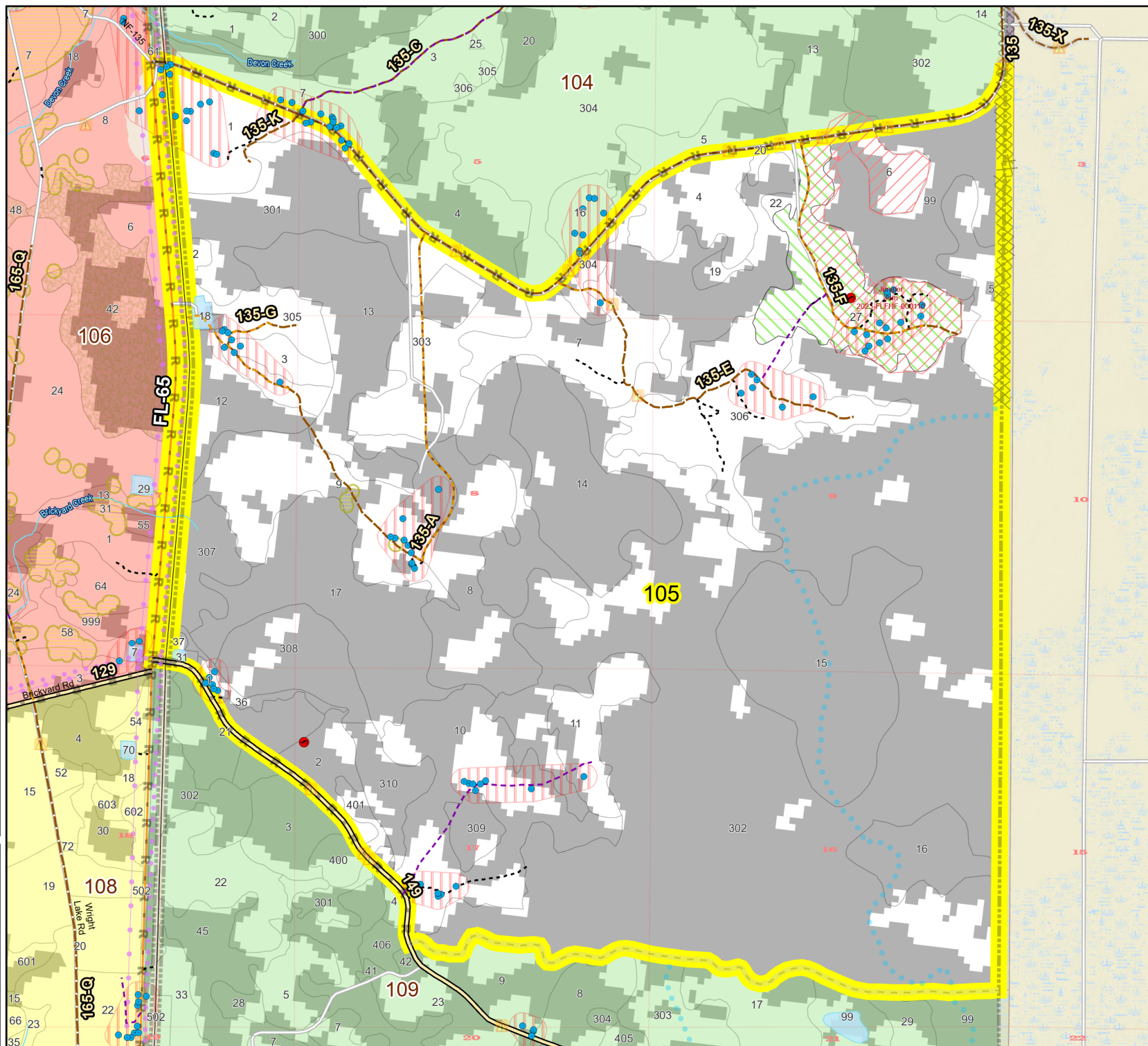
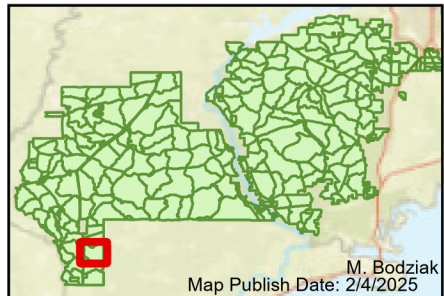


Prescribe Burn Map
 District: Apalachicola
 Apalachicola National Forest
Burn Unit 105
 3219 FACTS Reportable Acres
 1058 Burnable Acres
 Last Burned: 2/20/2023

- RCW Tree
- RCW Cluster
- No Disturbance Zone
- Flatwood
- Salamander
- Potential Pond
- Road Erosion
- Dozer Line
- Control Line
- Road
- Other Line
- Natural Feature Line
- Private
- Boundary Line
- access by foot
- access by utv
- Sapling Pines
- Savannah

Burn Unit Info		Yrs. Last Burn
	Burn Unit	0 - 1
	Private	> 1 - 2
	USFS No Burn	> 2 - 3
		> 3 - 4
		> 4 - 5
		> 5 - 10
		> 10 - 15
		> 15 - 20
		> 20 - 25



Age of Rough Last Updated: 11/6/2024

BurnDate	Tr.Winds	Temp	Mix Ht.
RH	Disp. Index	Wind	KBDI
DSR	RX Position	Burn Boss	