

Prescribe Burn Map

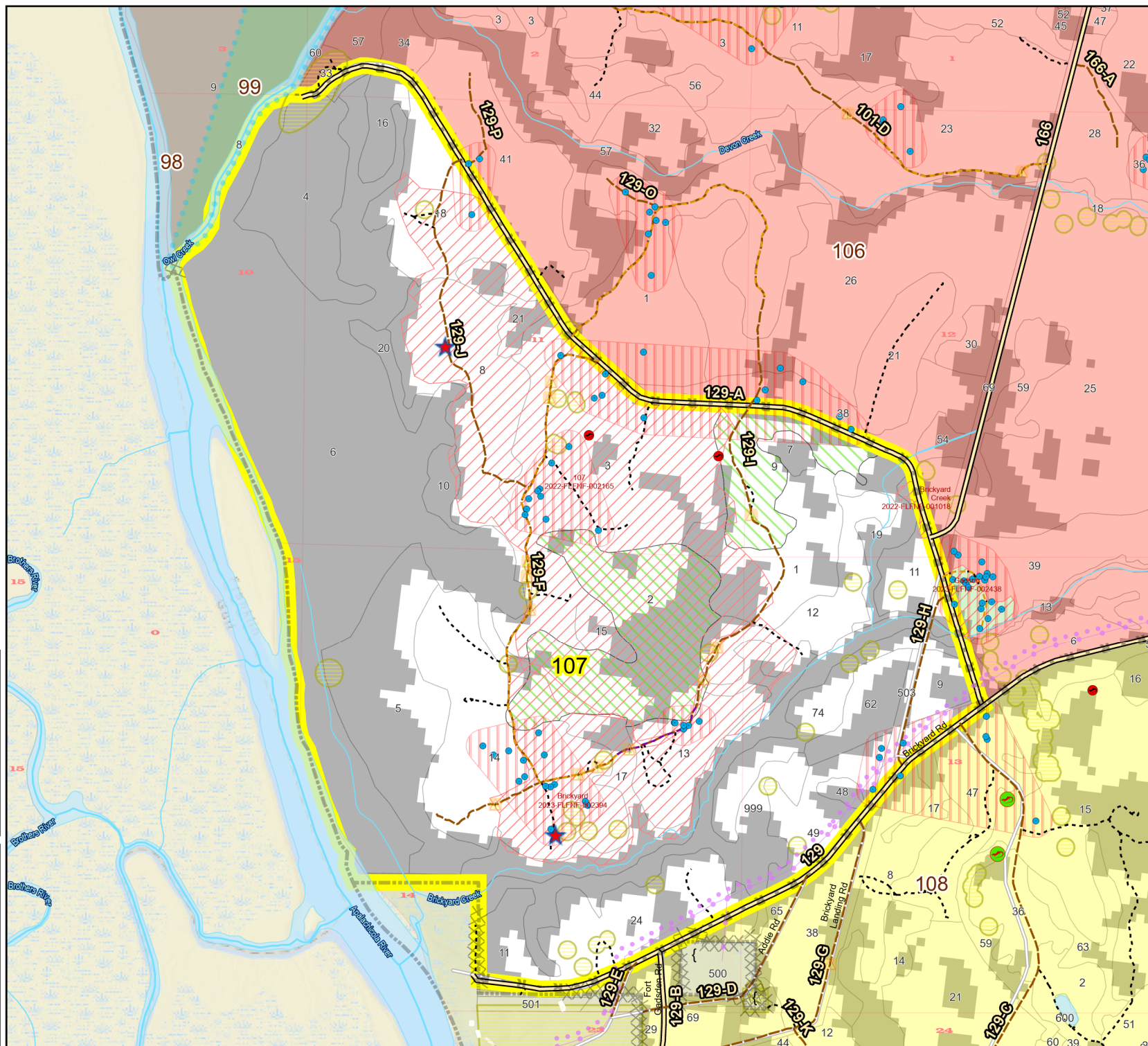
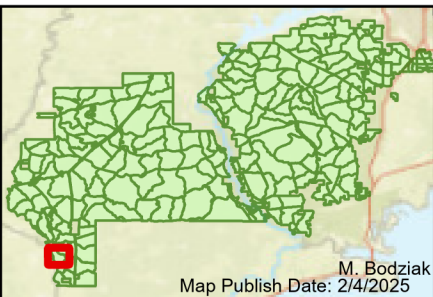
District: Apalachicola
Apalachicola National Forest

Burn Unit 107

1355 FACTS Reportable Acres
645 Burnable Acres
Last Burned: 10/5/2017

- RCW Tree
- RCW Cluster
- Disturbance Zone
- Flatwood
- Salamander Potential Pond
- ★ Apiary
- Road Erosion
- Dozer Line
- Control Line
- Road
- Natural
- Feature Line
- Private
- Boundary Line
- access by foot
- access by utv
- Sapling Pines

- Burn Unit Info**
- Burn Unit
 - Private
 - USFS No Burn
- Burnable Area**
- Did not burn last 27 yrs
 - Burned during last 27 yrs
- Yrs. Last Burn**
- 0 - 1
 - > 1 - 2
 - > 2 - 3
 - > 3 - 4
 - > 4 - 5
 - > 5 - 10
 - > 10 - 15
 - > 15 - 20
 - > 20 - 25



Age of Rough Last Updated: 11/6/2024

BurnDate	Tr.Winds	Temp	Mix Ht.
RH	Disp. Index	Wind	KBDI
DSR	RX Position	Burn Boss	

