

# Prescribe Burn Map

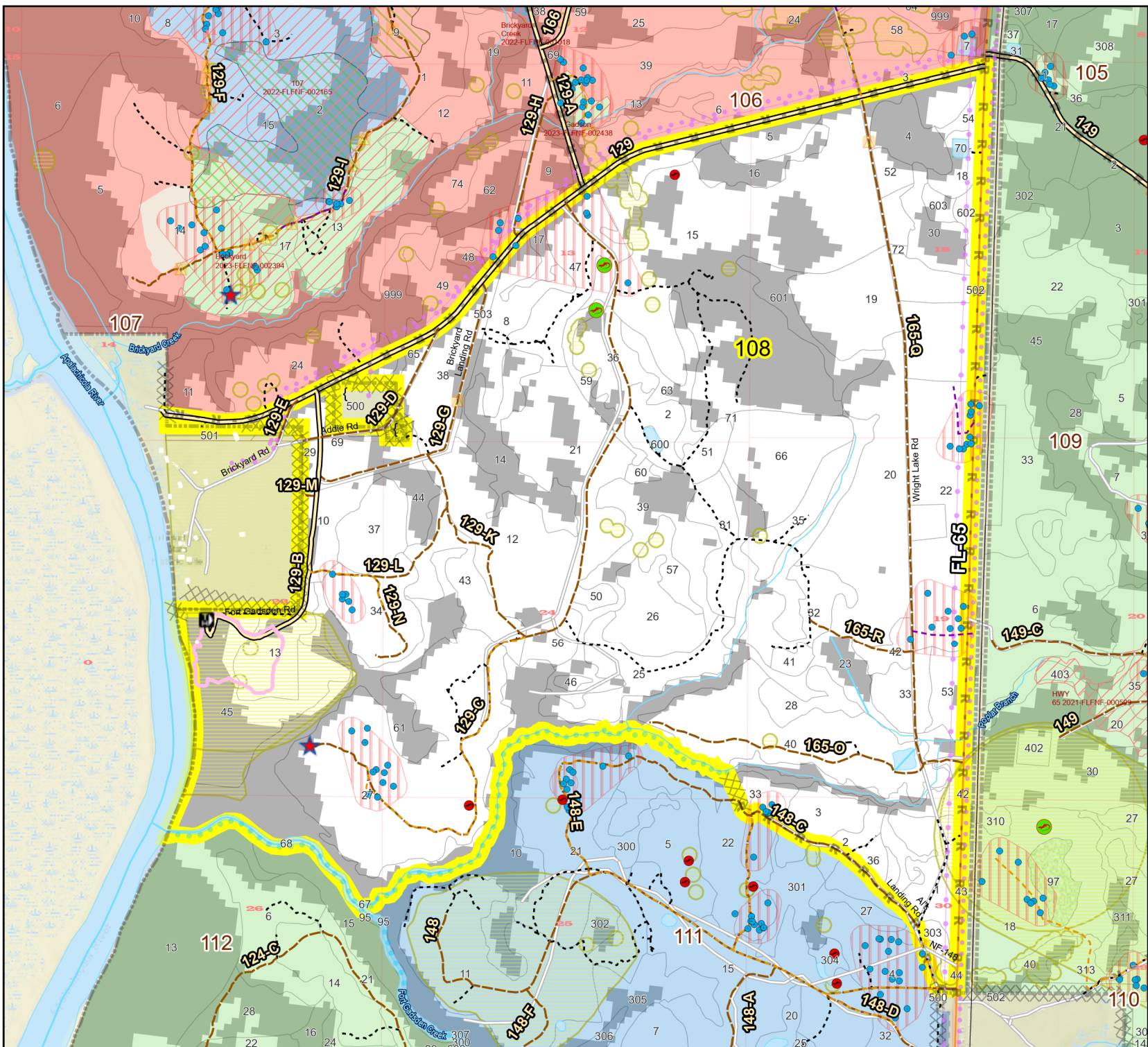
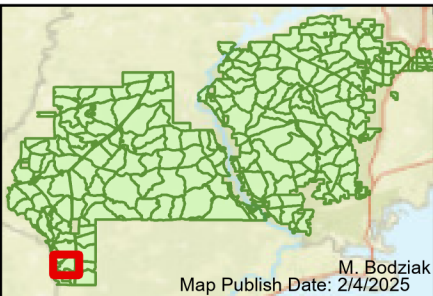
District: Apalachicola  
Apalachicola National Forest

## Burn Unit 108

2133 FACTS Reportable Acres  
1578 Burnable Acres  
Last Burned: 3/5/2021

- RCW Tree
- RCW Cluster
- Building Footprints
- Dozer Line
- No Disturbance Zone
- Active FS
- Pond
- Flatwood
- Salamander
- Potential Pond
- ★ Apiary
- Road Erosion
- Trails
- Control Line
- Road
- Other Line
- Natural Feature Line
- Private
- Boundary Line
- access by foot
- access by utv
- Sapling Pines
- Savannah

- ### Burn Unit Info
- Burn Unit
  - Private
  - USFS No Burn
- ### Burnable Area
- Did not burn last 27 yrs
  - Burned during last 27 yrs
- | Yrs. Last Burn | Color  |
|----------------|--|
| 0 - 1          | <span style="background-color: lightpink; width: 10px; height: 10px; display: inline-block;"></span>   |
| > 1 - 2        | <span style="background-color: lightgreen; width: 10px; height: 10px; display: inline-block;"></span>  |
| > 2 - 3        | <span style="background-color: yellow; width: 10px; height: 10px; display: inline-block;"></span>      |
| > 3 - 4        | <span style="background-color: lightblue; width: 10px; height: 10px; display: inline-block;"></span>   |
| > 4 - 5        | <span style="background-color: lightorange; width: 10px; height: 10px; display: inline-block;"></span> |
| > 5 - 10       | <span style="background-color: lightred; width: 10px; height: 10px; display: inline-block;"></span>    |
| > 10 - 15      | <span style="background-color: lightpurple; width: 10px; height: 10px; display: inline-block;"></span> |
| > 15 - 20      | <span style="background-color: lightblue; width: 10px; height: 10px; display: inline-block;"></span>   |
| > 20 - 25      | <span style="background-color: lightpurple; width: 10px; height: 10px; display: inline-block;"></span> |



Age of Rough Last Updated: 11/6/2024

BurnDate	Tr.Winds	Temp	Mix Ht.
RH	Disp. Index	Wind	KBDI
DSR	RX Position	Burn Boss	

