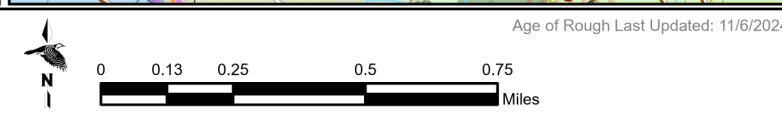
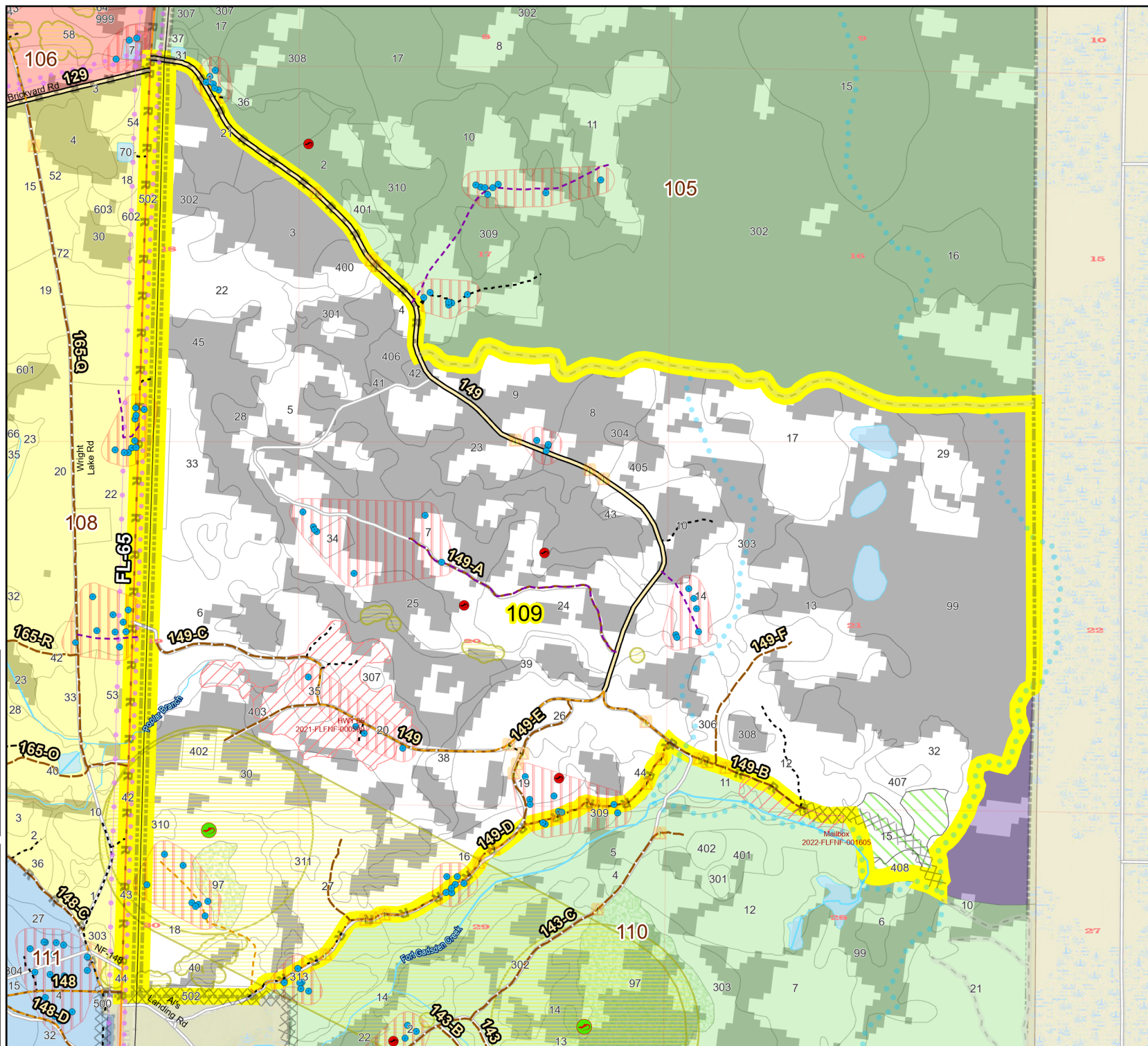
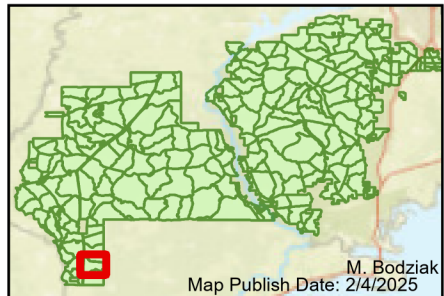


Prescribe Burn Map
 District: Apalachicola
 Apalachicola National Forest
Burn Unit 109
 2320 FACTS Reportable Acres
 1272 Burnable Acres
 Last Burned: 2/21/2023

- RCW Tree
- RCW Cluster
- No Disturbance Zone
- Active FS Pond
- Flatwood Salamander
- Potential Pond
- Road Erosion
- Dozer Line
- Control Line
- Road Other Line
- Natural Feature Line
- Private Boundary Line
- access by foot
- access by utv
- Sapling Pines
- Savannah

- Burn Unit Info**
- Burn Unit
 - Private
 - USFS No Burn
- Burnable Area**
- Did not burn last 27 yrs
 - Burned during last 27 yrs
- | | |
|-----------------------|---|
| Yrs. Last Burn | 0 - 1 |
| | > 1 - 2 |
| | > 2 - 3 |
| | > 3 - 4 |
| | > 4 - 5 |
| | > 5 - 10 |
| | > 10 - 15 |
| | > 15 - 20 |
| | > 20 - 25 |



Age of Rough Last Updated: 11/6/2024

BurnDate _____	Tr.Winds _____	Temp _____	Mix Ht. _____
RH _____	Disp. Index _____	Wind _____	KBDI _____
DSR _____	RX Position _____	Burn Boss _____	