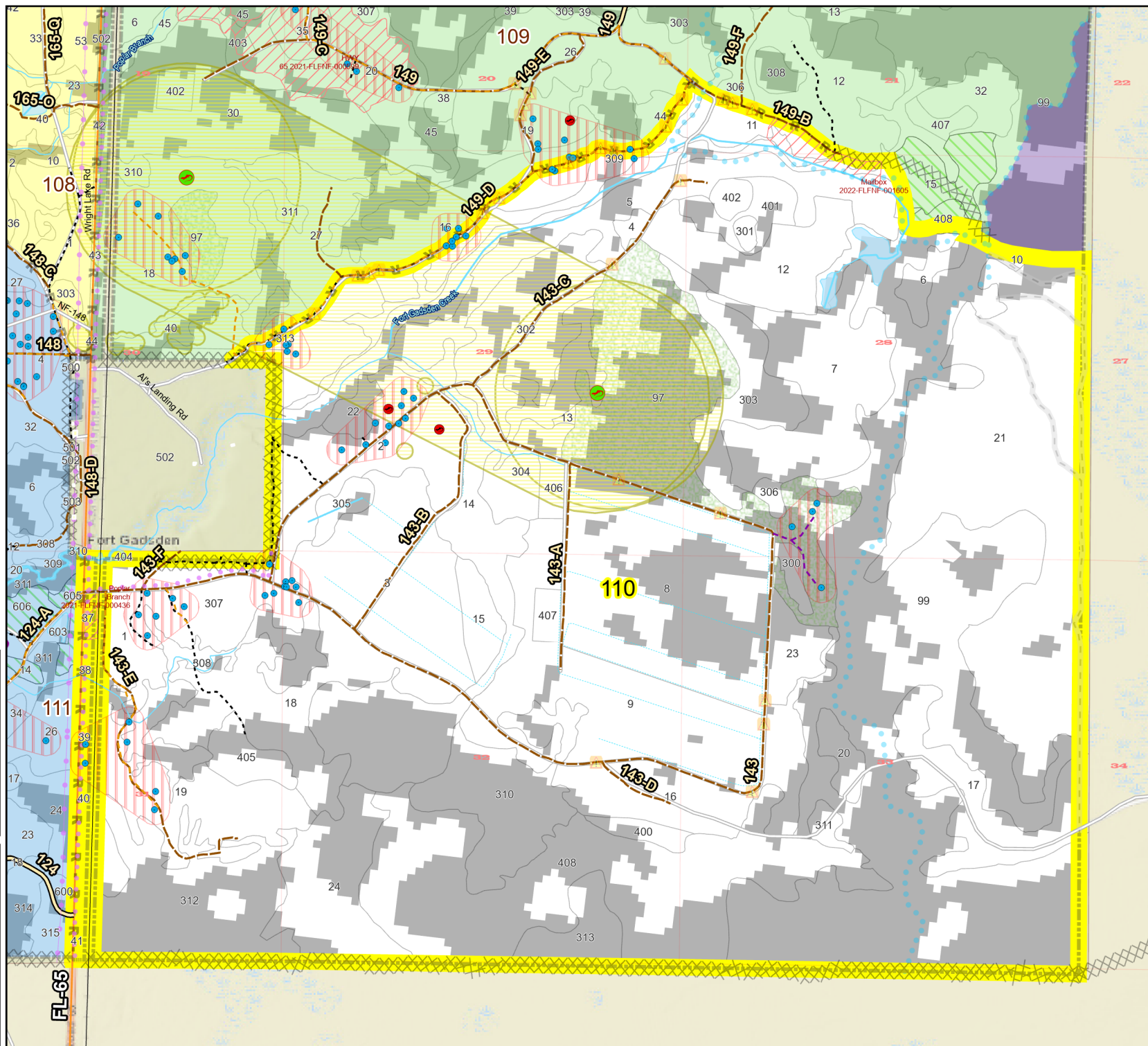
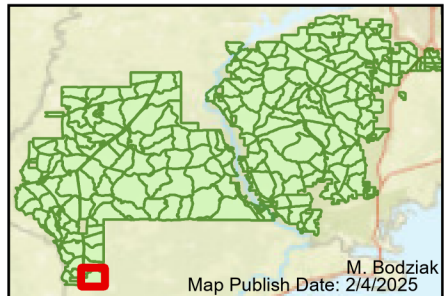


Prescribe Burn Map
 District: Apalachicola
 Apalachicola National Forest
Burn Unit 110
 2763 FACTS Reportable Acres
 1758 Burnable Acres
 Last Burned: 2/21/2023

RCW Tree	Control Line
RCW Cluster	Road
No Disturbance Zone	Other Line
Active FS Pond	Natural Feature Line
Flatwood Salamander	Private Boundary Line
Potential Pond	access by foot
Road Erosion	access by utv
Dozer Line	Sapling Pines
	Savannah

Burn Unit Info	Yrs. Last Burn
Burn Unit	0 - 1
Private	> 1 - 2
USFS No Burn	> 2 - 3
	> 3 - 4
Burnable Area	> 4 - 5
Did not burn last 27 yrs	> 5 - 10
Burned during last 27 yrs	> 10 - 15
	> 15 - 20
	> 20 - 25



Age of Rough Last Updated: 11/6/2024

BurnDate _____	Tr.Winds _____	Temp _____	Mix Ht. _____
RH _____	Disp. Index _____	Wind _____	KBDI _____
DSR _____	RX Position _____	Burn Boss _____	