

# Prescribe Burn Map

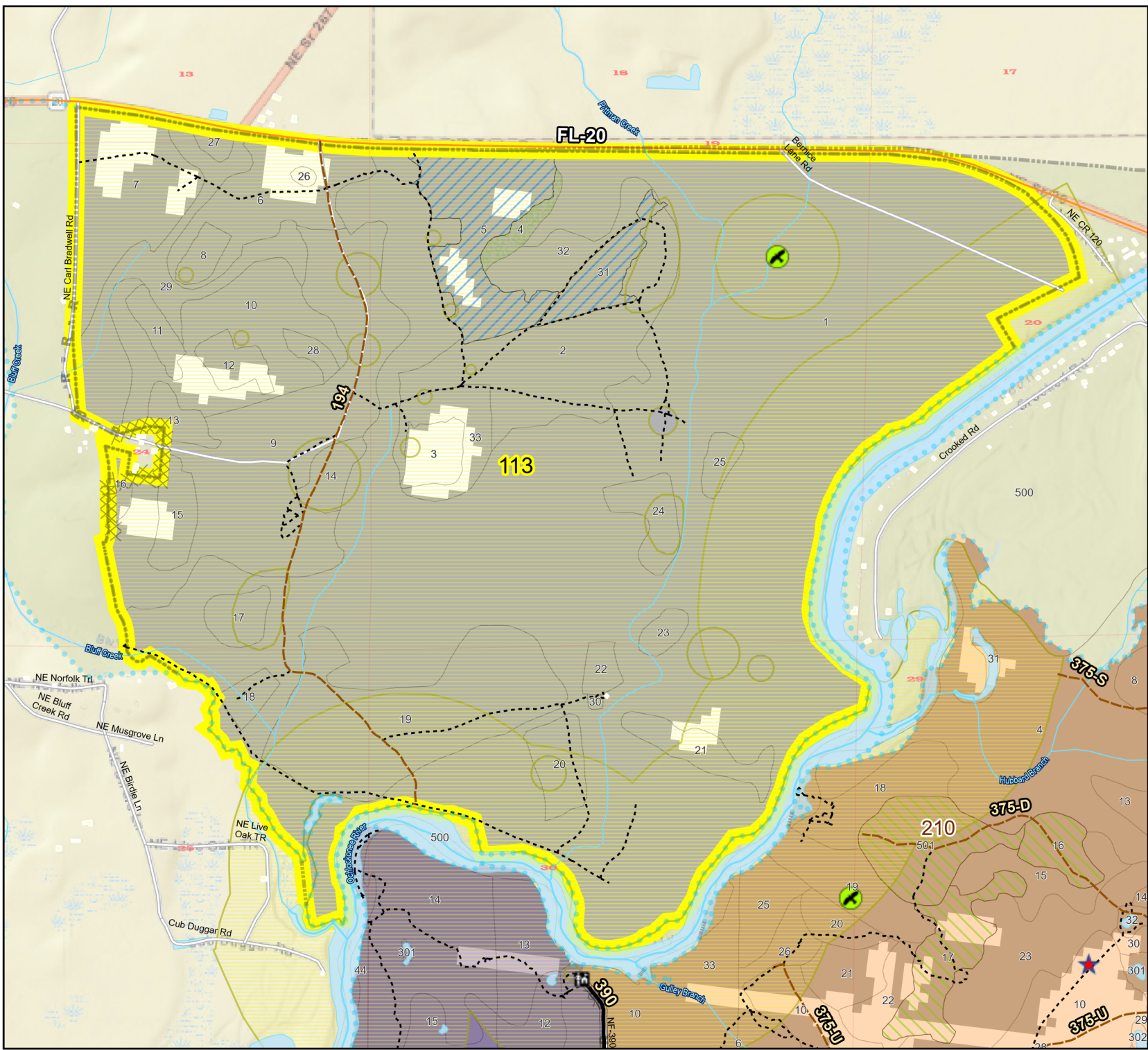
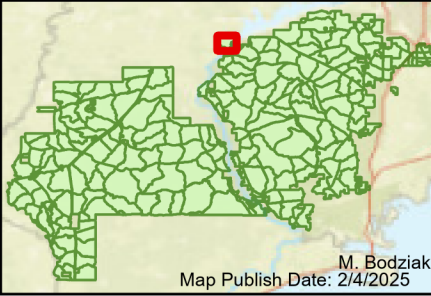
District: Apalachicola  
Apalachicola National Forest

## Burn Unit 113

1424 FACTS Reportable Acres  
54 Burnable Acres  
Last Burned: 2/14/2024

- |  |                     |  |                       |
|--|---------------------|--|-----------------------|
|  | No Disturbance Zone |  | Control Line          |
|  | Eagles              |  | Road                  |
|  | Apiary              |  | Natural Feature Line  |
|  | Road Erosion        |  | Private Boundary Line |
|  | Building Footprints |  | Young Longleaf        |
|  | Dozer Line          |  | Sapling Pines         |
|  |                     |  | Savannah              |

- |                       |                           |                       |           |
|-----------------------|---------------------------|-----------------------|-----------|
| <b>Burn Unit Info</b> |                           | <b>Yrs. Last Burn</b> |           |
|                       | Burn Unit                 |                       | 0 - 1     |
|                       | Private                   | > 1-2 yrs symbol"/>   | > 1 - 2   |
|                       | USFS No Burn              | > 2-3 yrs symbol"/>   | > 2 - 3   |
|                       |                           | > 3-4 yrs symbol"/>   | > 3 - 4   |
|                       |                           | > 4-5 yrs symbol"/>   | > 4 - 5   |
| <b>Burnable Area</b>  |                           | > 5-10 yrs symbol"/>  | > 5 - 10  |
|                       | Did not burn last 27 yrs  | > 10-15 yrs symbol"/> | > 10 - 15 |
|                       | Burned during last 27 yrs | > 15-20 yrs symbol"/> | > 15 - 20 |
|                       |                           | > 20-25 yrs symbol"/> | > 20 - 25 |



Age of Rough Last Updated: 11/6/2024

BurnDate	Tr.Winds	Temp	Mix Ht.
RH	Disp. Index	Wind	KBDI
DSR	RX Position	Burn Boss	