

Prescribe Burn Map
 District: Apalachicola
 Apalachicola National Forest
Burn Unit 198
 909 FACTS Reportable Acres
 272 Burnable Acres
 Last Burned: 11/4/2021

Legend

- No Disturbance Zone
- Road Erosion
- Private Boundary Line
- Young Longleaf

Burn Unit Info

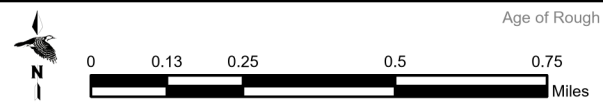
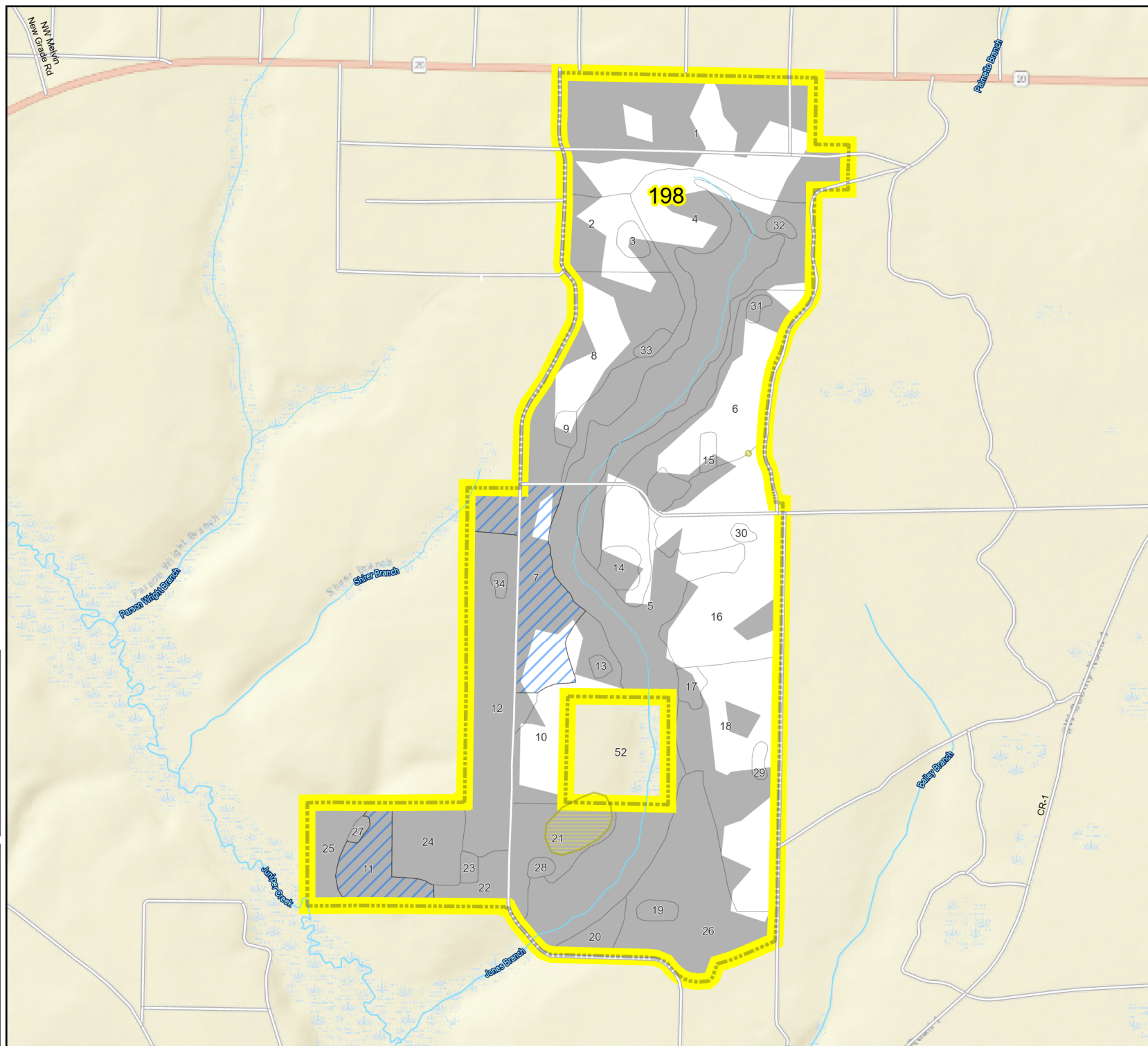
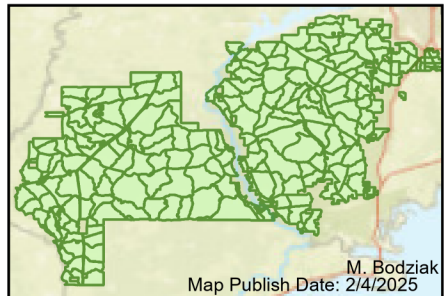
- Burn Unit
- Private
- USFS No Burn

Burnable Area

- Did not burn last 27 yrs
- Burned during last 27 yrs

Yrs. Last Burn

- 0 - 1
- > 1 - 2 symbol"/> > 1 - 2
- > 2 - 3 symbol"/> > 2 - 3
- > 3 - 4 symbol"/> > 3 - 4
- > 4 - 5 symbol"/> > 4 - 5
- > 5 - 10 symbol"/> > 5 - 10
- > 10 - 15 symbol"/> > 10 - 15
- > 15 - 20 symbol"/> > 15 - 20
- > 20 - 25 symbol"/> > 20 - 25



Age of Rough Last Updated: 11/6/2024

BurnDate _____ Tr. Winds _____ Temp _____ Mix Ht. _____
 RH _____ Disp. Index _____ Wind _____ KBDI _____
 DSR _____ RX Position _____ Burn Boss _____