

# Prescribe Burn Map

District: Apalachicola  
Apalachicola National Forest

## Burn Unit 198

909 FACTS Reportable Acres  
272 Burnable Acres  
Last Burned: 11/4/2021

- No
- Disturbance Zone
- Road Erosion
- Dozer Line
- Prep - Rx Fire
- Private
- Boundary Line
- Young Longleaf

**Burn Unit Info**

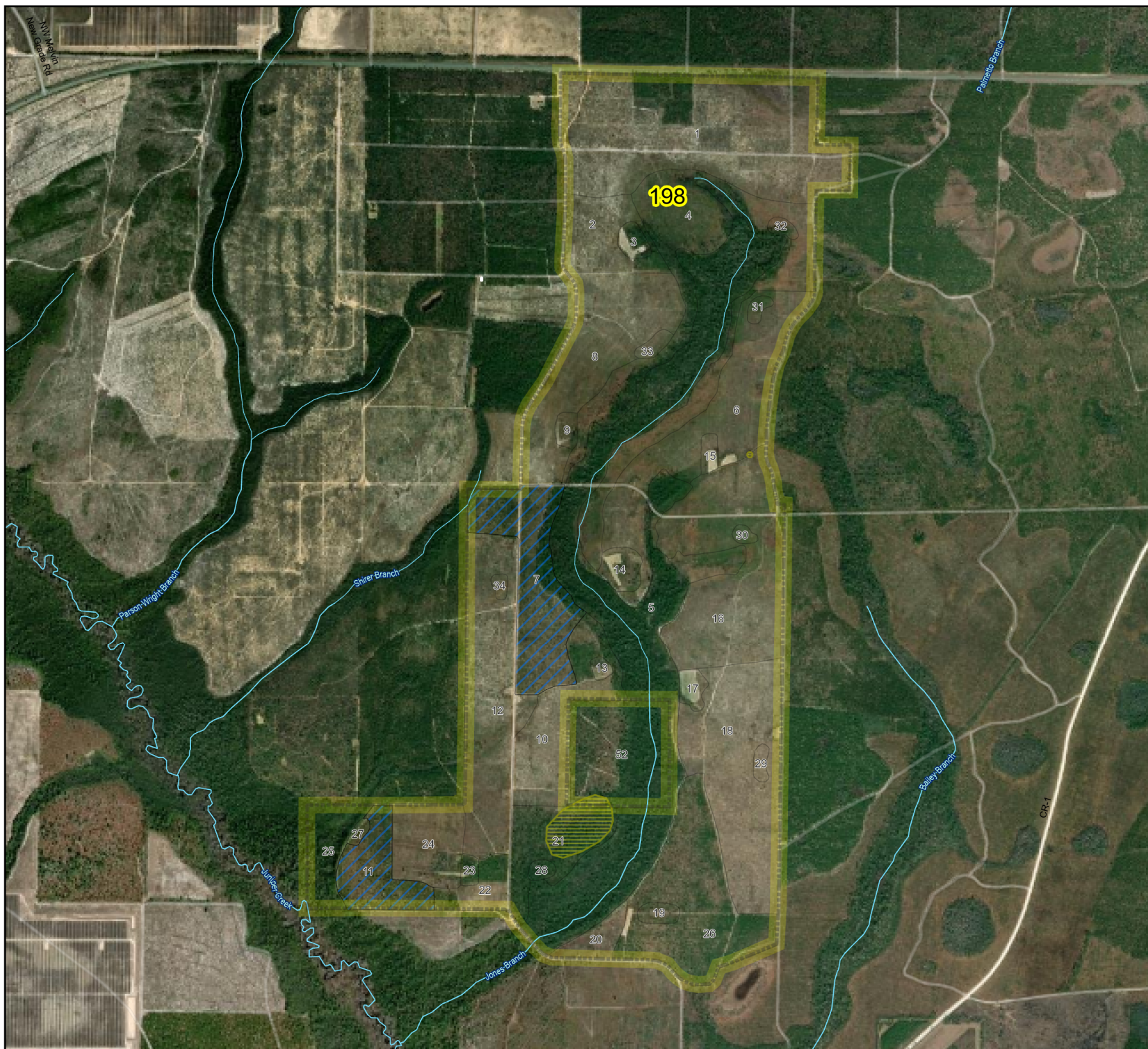
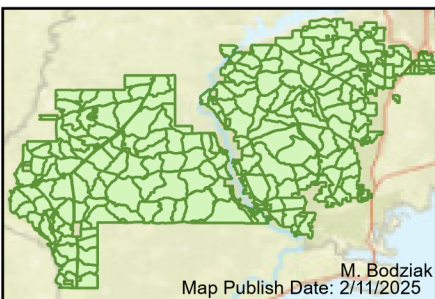
- Burn Unit
- Private
- USFS No Burn

**Burnable Area**

- Did not burn last 27 yrs
- Burned during last 27 yrs

**Yrs. Last Burn**

- 0 - 1
- > 1 - 2 symbol"/> > 1 - 2
- > 2 - 3 symbol"/> > 2 - 3
- > 3 - 4 symbol"/> > 3 - 4
- > 4 - 5 symbol"/> > 4 - 5
- > 5 - 10 symbol"/> > 5 - 10
- > 10 - 15 symbol"/> > 10 - 15
- > 15 - 20 symbol"/> > 15 - 20
- > 20 - 25 symbol"/> > 20 - 25



Age of Rough Last Updated: 11/6/2024



BurnDate \_\_\_\_\_ Tr.Winds \_\_\_\_\_ Temp \_\_\_\_\_ Mix Ht. \_\_\_\_\_  
 RH \_\_\_\_\_ Disp. Index \_\_\_\_\_ Wind \_\_\_\_\_ KBDI \_\_\_\_\_  
 DSR \_\_\_\_\_ RX Position \_\_\_\_\_ Burn Boss \_\_\_\_\_

