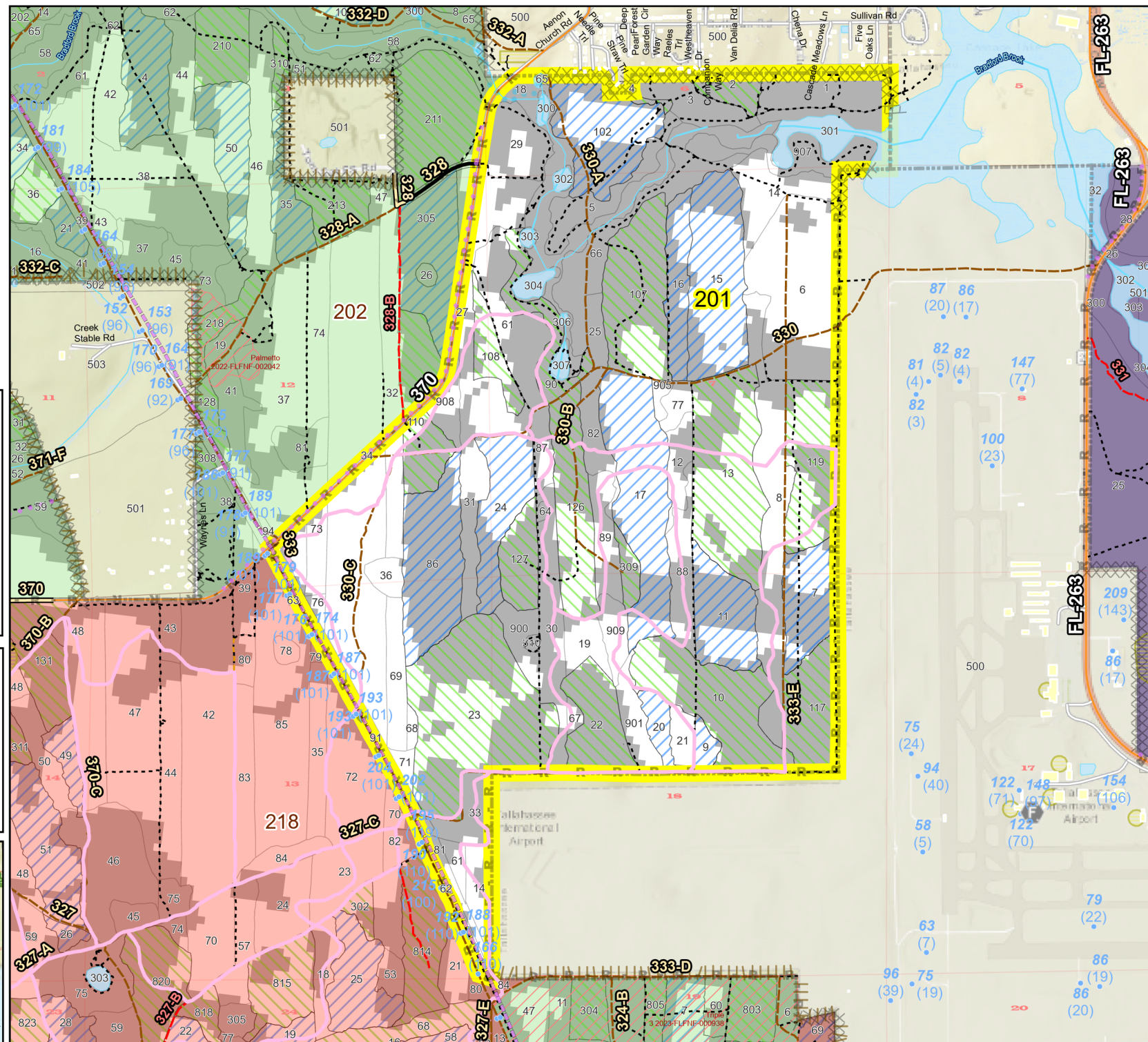
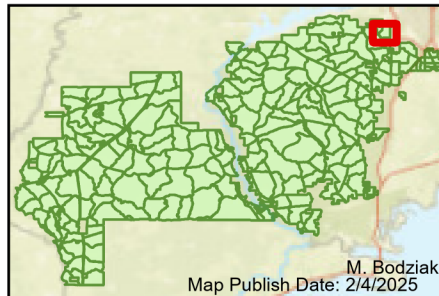


Prescribe Burn Map  
 District: Wakulla  
 Apalachicola National Forest  
**Burn Unit 201**  
 1294 FACTS Reportable Acres  
 536 Burnable Acres  
 Last Burned: 1/11/2022



- |                           |                       |
|---------------------------|-----------------------|
| No Disturbance Zone       | Control Line Road     |
| Road Erosion              | Other Line            |
| Trails                    | Natural Feature Line  |
| Towers (FAA)              | Private Boundary Line |
| Dozer Line Prep - Rx Fire | access by utv         |
| Dozer Line                | Young Longleaf        |
|                           | Sapling Pines         |

Burn Unit Info	
Burn Unit	0 - 1
Private	> 1 - 2
USFS No Burn	> 2 - 3
	> 3 - 4
	> 4 - 5
	> 5 - 10
	> 10 - 15
	> 15 - 20
	> 20 - 25



Age of Rough Last Updated: 11/6/2024

BurnDate	Tr.Winds	Temp	Mix Ht.
RH	Disp. Index	Wind	KBDI
DSR	RX Position	Burn Boss	