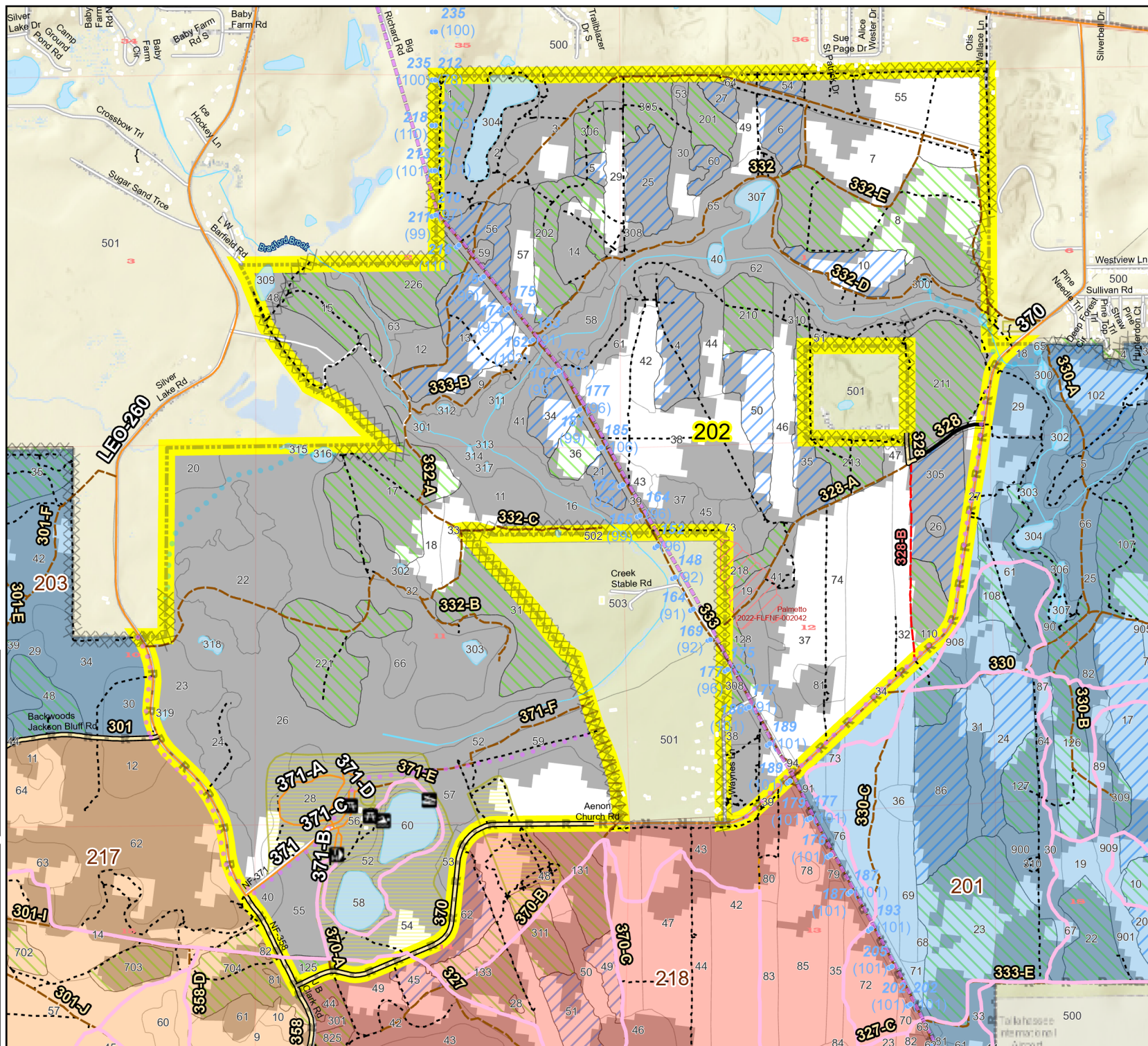
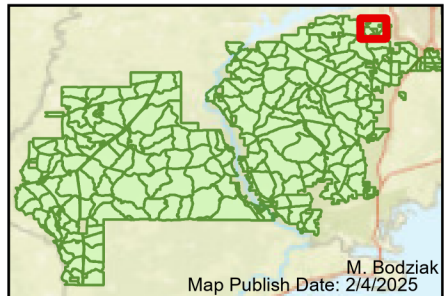


Prescribe Burn Map  
 District: Wakulla  
 Apalachicola National Forest  
**Burn Unit 202**  
 2304 FACTS Reportable Acres  
 474 Burnable Acres  
 Last Burned: 2/6/2023



- No Disturbance Zone
- Road Erosion
- Trails
- Building Footprints
- Towers (FAA)
- Dozer Line
- Prep - Rx Fire
- Dozer Line
- Control Line Road
- Natural Feature Line
- Private Boundary Line
- access by utv
- Young Longleaf
- Sapling Pines

Burn Unit Info		Yrs. Last Burn	
	Burn Unit		0 - 1
	Private	> 1-2 yrs symbol"/>	> 1 - 2
	USFS No Burn	> 2-3 yrs symbol"/>	> 2 - 3
		> 3-4 yrs symbol"/>	> 3 - 4
		> 4-5 yrs symbol"/>	> 4 - 5
		> 5-10 yrs symbol"/>	> 5 - 10
		> 10-15 yrs symbol"/>	> 10 - 15
		> 15-20 yrs symbol"/>	> 15 - 20
		> 20-25 yrs symbol"/>	> 20 - 25



Age of Rough Last Updated: 11/6/2024

BurnDate	Tr.Winds	Temp	Mix Ht.
RH	Disp. Index	Wind	KBDI
DSR	RX Position	Burn Boss	