

Prescribe Burn Map

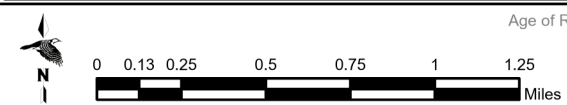
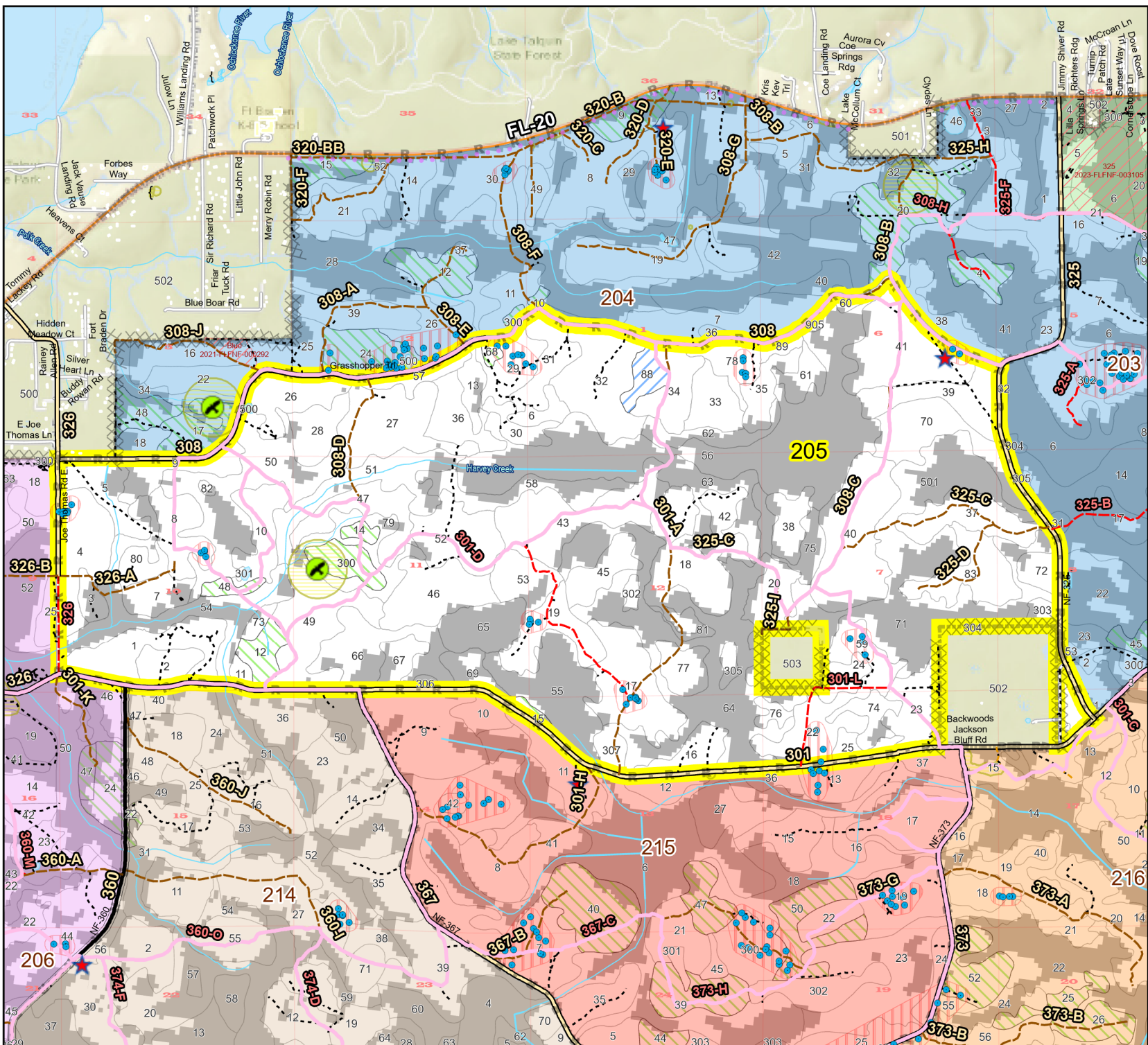
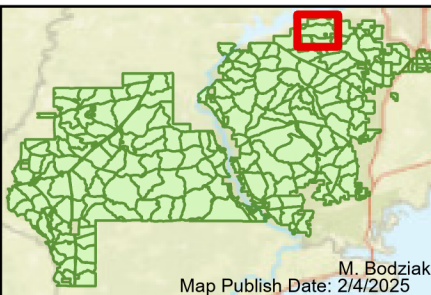
District: Wakulla
Apalachicola National Forest

Burn Unit 205

3955 FACTS Reportable Acres
2791 Burnable Acres
Last Burned: 3/2/2018

- RCW Tree
- RCW Cluster
- Disturbance Zone
- Eagles
- Apiary
- Road Erosion
- Trails
- Dozer Line
- Control Line
- Road
- Other Line
- Private
- Boundary Line
- access by utv
- Young Longleaf
- Sapling Pines

Burn Unit Info		Yrs. Last Burn	
Burn Unit		0 - 1	
Private		> 1 - 2	
USFS No Burn		> 2 - 3	
		> 3 - 4	
		> 4 - 5	
		> 5 - 10	
		> 10 - 15	
		> 15 - 20	
		> 20 - 25	



Age of Rough Last Updated: 11/6/2024

BurnDate	Tr. Winds	Temp	Mix Ht.
RH	Disp. Index	Wind	KBDI
DSR	RX Position	Burn Boss	