

Prescribe Burn Map

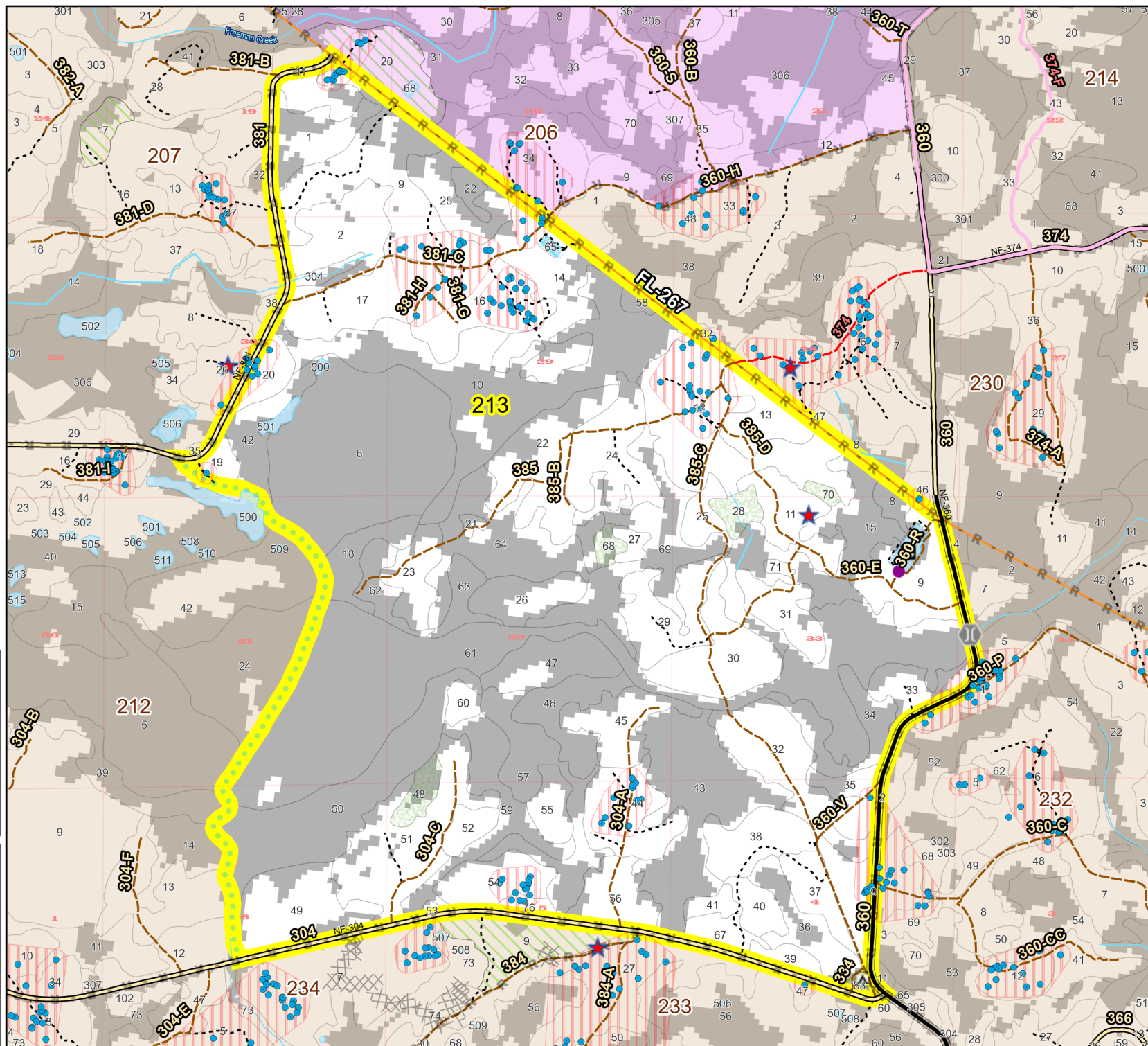
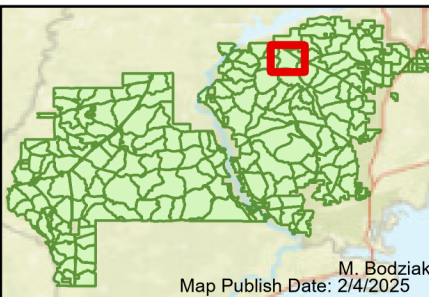
District: Wakulla
Apalachicola National Forest

Burn Unit 213

3644 FACTS Reportable Acres
1883 Burnable Acres
Last Burned: 1/30/2024

- RCW Tree
- RCW Cluster
- Disturbance Zone
- ★ Apiary
- Road Erosion
- Trails
- Building Footprints
- Dozer Line
- Control Line
- Road
- Natural Feature Line
- Sapling Pines
- Savannah

- | Burn Unit Info | | Yrs. Last Burn | |
|--|---|---|---|
| Burn Unit | 0 - 1 | > 1 - 2 | > 2 - 3 |
| Private | > 3 - 4 | > 4 - 5 | > 5 - 10 |
| USFS No Burn | > 10 - 15 | > 15 - 20 | > 20 - 25 |
| Burnable Area | | | |
| Did not burn last 27 yrs | | | |
| Burned during last 27 yrs | | | |



Age of Rough Last Updated: 11/6/2024

BurnDate	Tr.Winds	Temp	Mix Ht.
RH	Disp. Index	Wind	KBDI
DSR	RX Position	Burn Boss	

