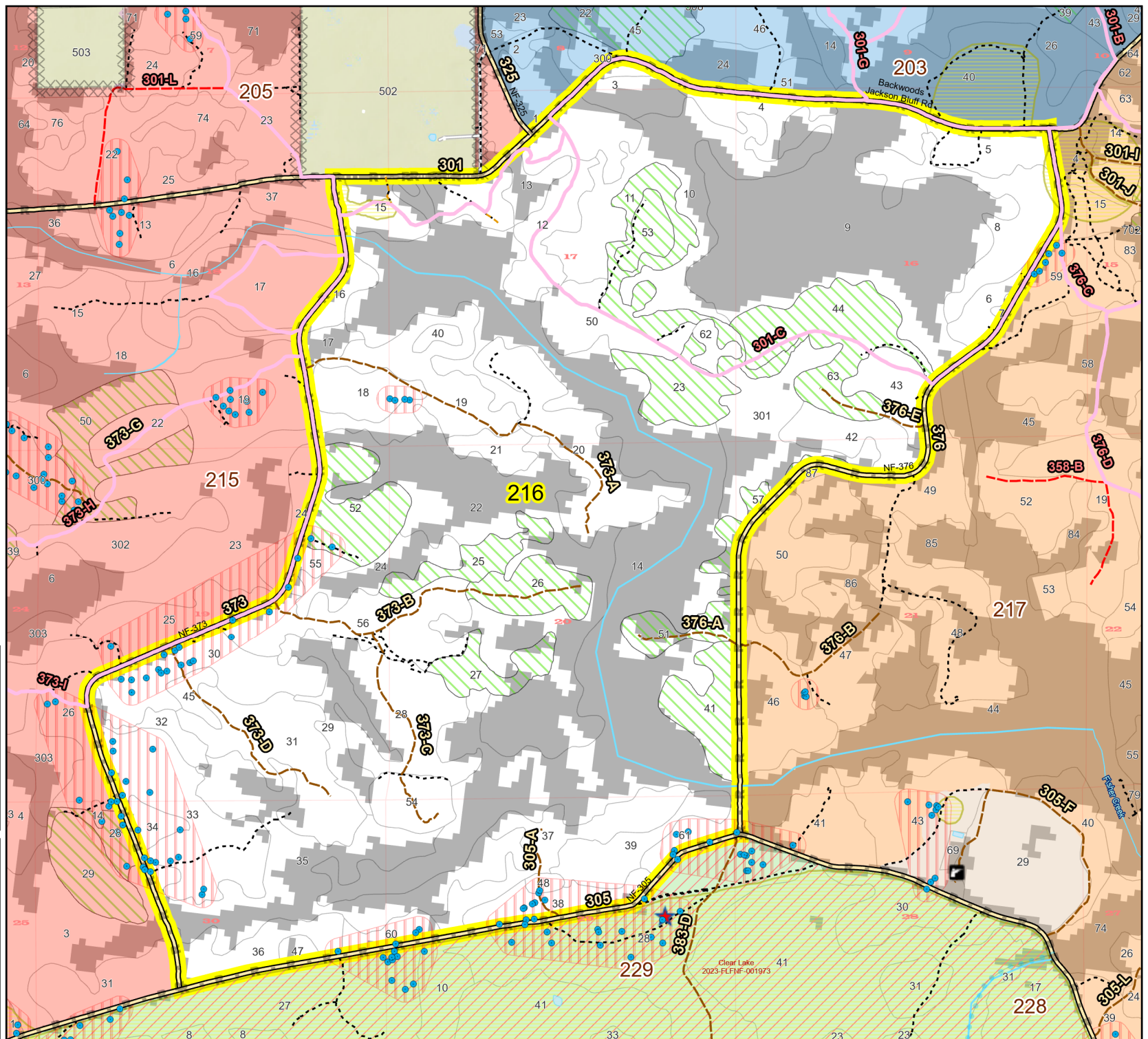
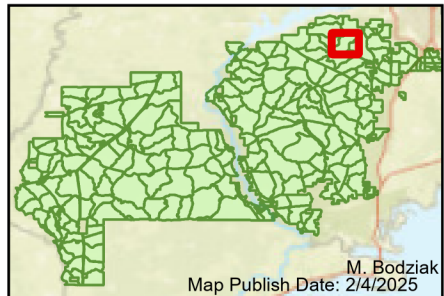


Prescribe Burn Map  
 District: Wakulla  
 Apalachicola National Forest  
**Burn Unit 216**  
 2603 FACTS Reportable Acres  
 1665 Burnable Acres  
 Last Burned: 6/1/2020

- RCW Tree
- RCW Cluster
- No
- Disturbance Zone
- ★ Apiary
- Road Erosion
- Trails
- Dozer Line
- Control Line
- Road
- Other Line
- Natural Feature Line
- Private Boundary Line
- access by utv
- Sapling Pines

Burn Unit Info		Yrs. Last Burn
<span style="background-color: yellow; border: 1px solid black; width: 15px; height: 15px; display: inline-block;"></span>	Burn Unit	0 - 1
<span style="background-color: gray; border: 1px solid black; width: 15px; height: 15px; display: inline-block;"></span>	Private	> 1 - 2
<span style="border: 1px dashed black; width: 15px; height: 15px; display: inline-block;"></span>	USFS No Burn	> 2 - 3
		> 3 - 4
		> 4 - 5
		> 5 - 10
		> 10 - 15
		> 15 - 20
		> 20 - 25



Age of Rough Last Updated: 11/6/2024

BurnDate	Tr.Winds	Temp	Mix Ht.
RH	Disp. Index	Wind	KBDI
DSR	RX Position	Burn Boss	