

Prescribe Burn Map

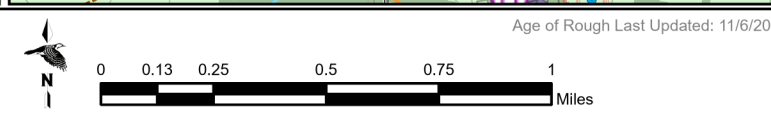
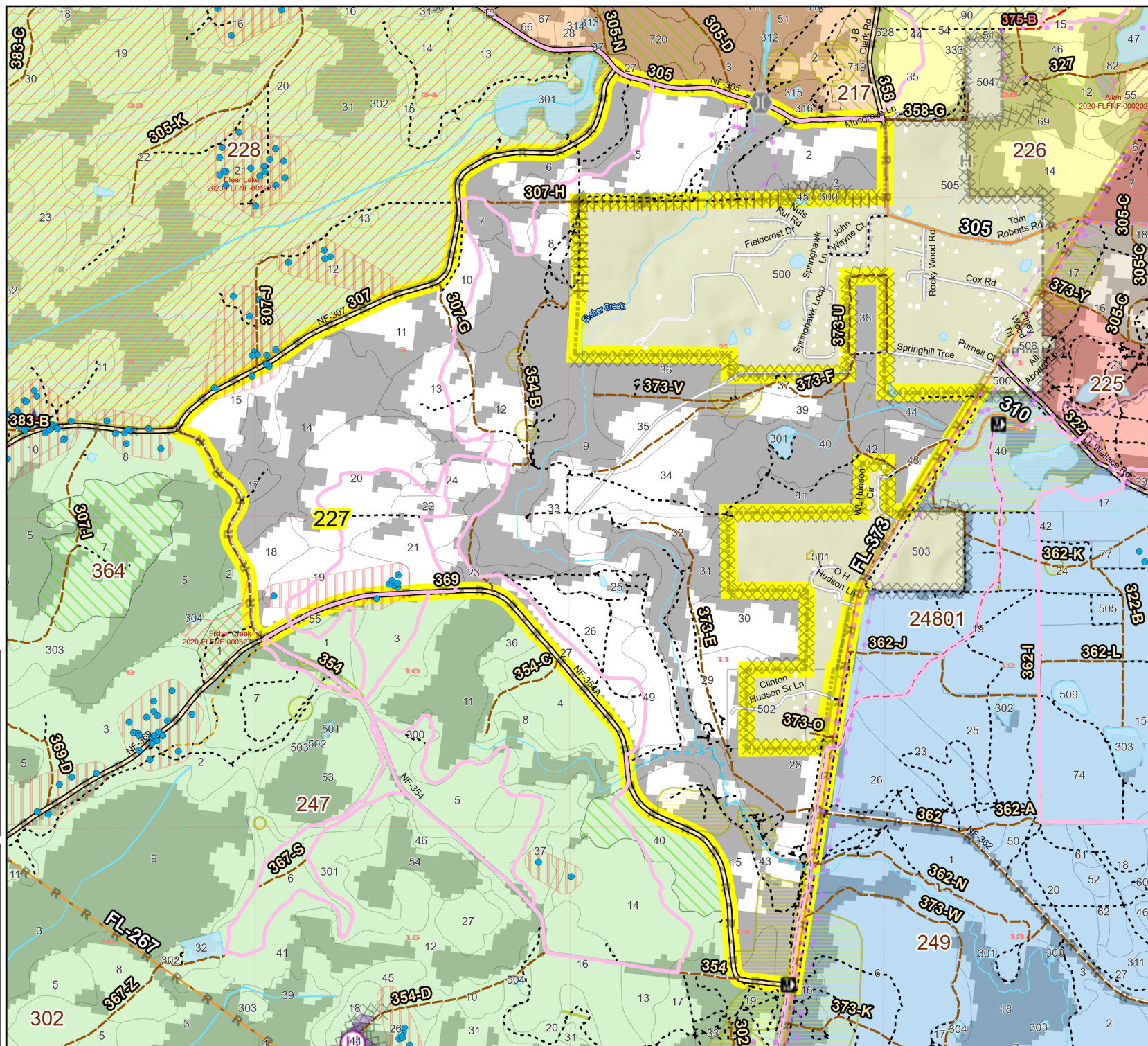
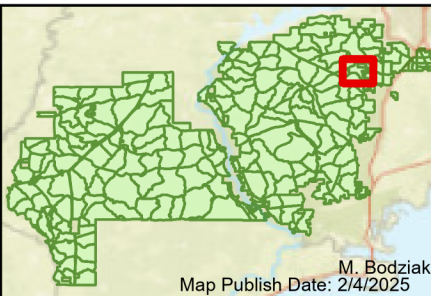
District: Wakulla
Apalachicola National Forest

Burn Unit 227

1817 FACTS Reportable Acres
797 Burnable Acres
Last Burned: 7/17/2020

- RCW Tree
- RCW Cluster
- No Disturbance Zone
- ★ Apiary
- Road Erosion
- Trails
- Dozer Line
- Prep - Rx Fire
- Dozer Line
- Control Line
- Road
- Completed Hand Line
- Completed Leaf Blower
- Natural Feature Line
- Private Boundary Line
- access by utv
- Young Longleaf
- Sapling Pines

- | Burn Unit Info | |
|--|--|
| Burn Unit | Yrs. Last Burn |
| Private | 0 - 1 |
| USFS No Burn | > 1 - 2 |
| | > 2 - 3 |
| | > 3 - 4 |
| | > 4 - 5 |
| | > 5 - 10 |
| | > 10 - 15 |
| | > 15 - 20 |
| | > 20 - 25 |



BurnDate	Tr. Winds	Temp	Mix Ht.
RH	Disp. Index	Wind	KBDI
DSR	RX Position	Burn Boss	