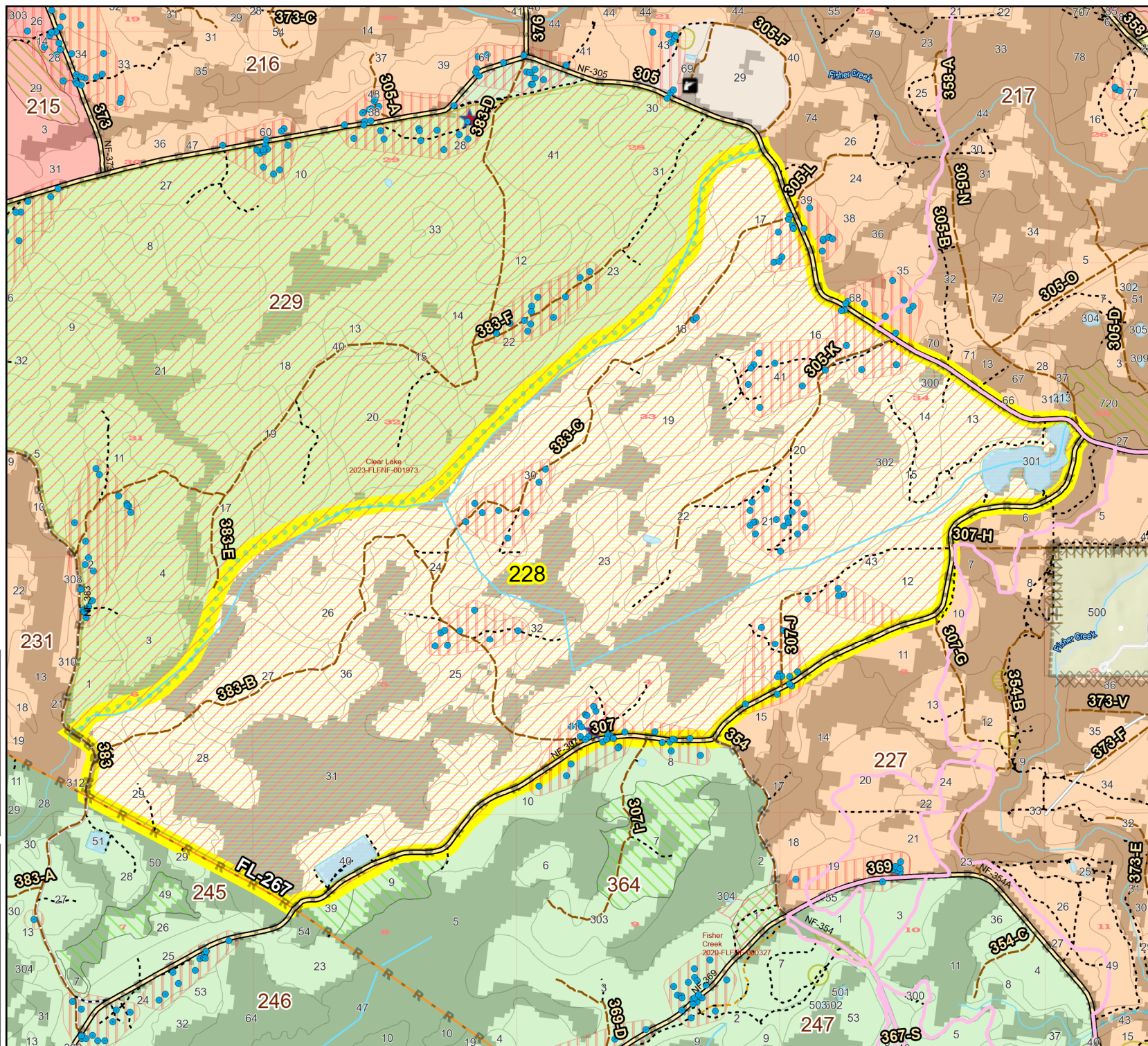
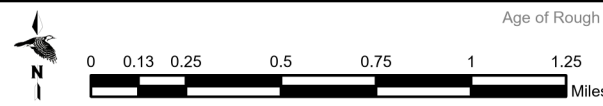
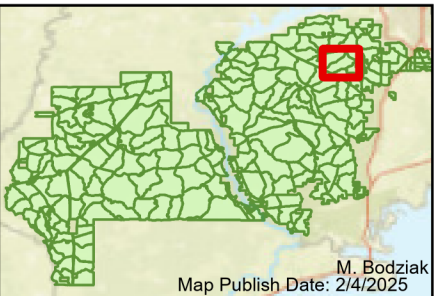


Prescribe Burn Map
 District: Wakulla
 Apalachicola National Forest
Burn Unit 228
 2939 FACTS Reportable Acres
 2200 Burnable Acres
 Last Burned: 2/7/2015



- RCW Tree
- RCW Cluster
- No Disturbance Zone
- Apiary
- Road Erosion
- Trails
- Dozer Line
- Prep - Rx Fire
- Dozer Line
- Control Line
- Road
- Completed Hand Line
- Completed Leaf Blower
- Natural Feature Line
- Private Boundary Line
- Boundary Line
- access by utv
- Sapling Pines

Burn Unit Info		Yrs. Last Burn	
	Burn Unit		0 - 1
	Private		> 1 - 2
	USFS No Burn		> 2 - 3
			> 3 - 4
			> 4 - 5
			> 5 - 10
			> 10 - 15
			> 15 - 20
			> 20 - 25



Age of Rough Last Updated: 11/6/2024

BurnDate	Tr.Winds	Temp	Mix Ht.
RH	Disp. Index	Wind	KBDI
DSR	RX Position	Burn Boss	