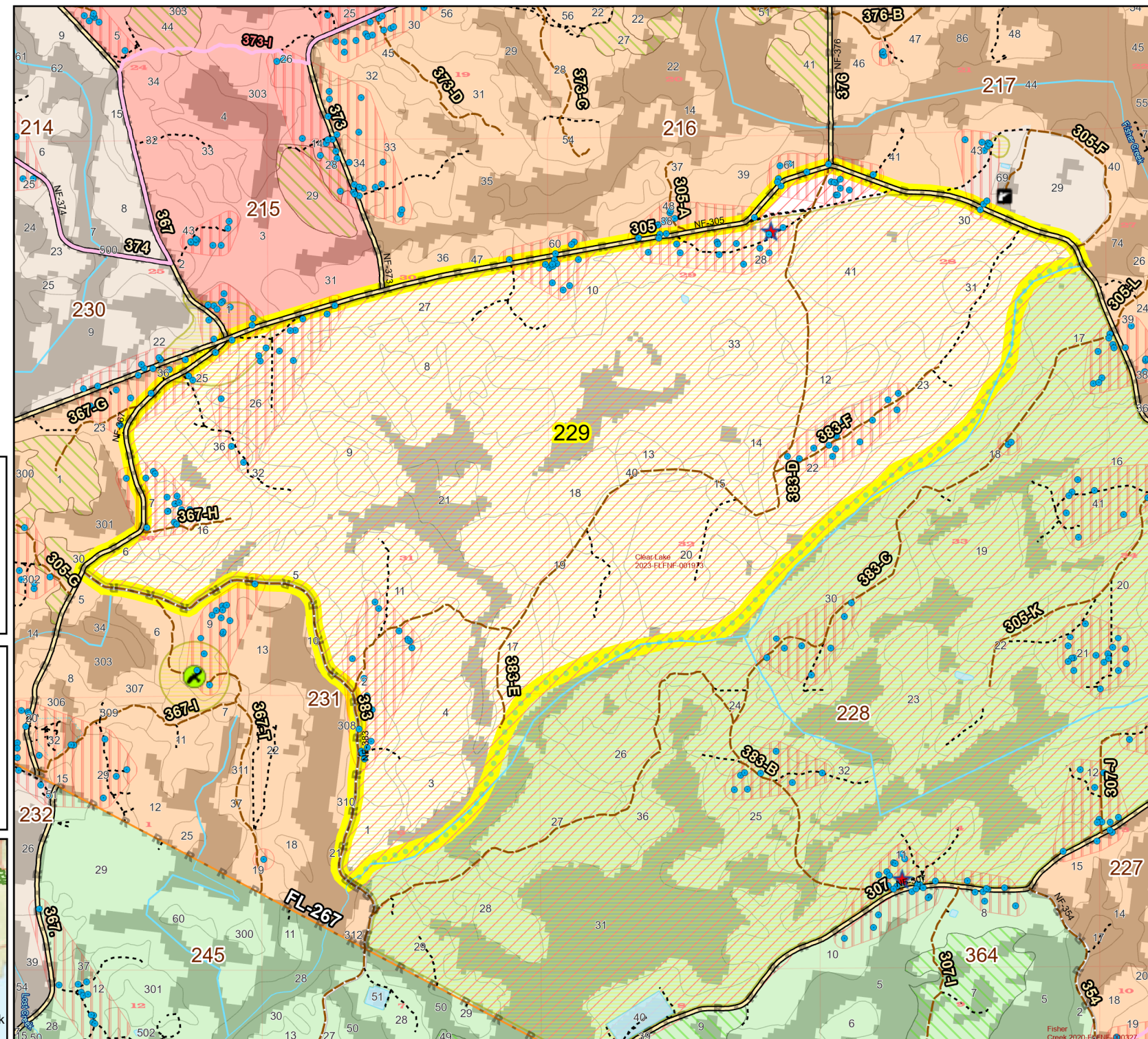
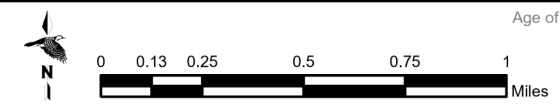
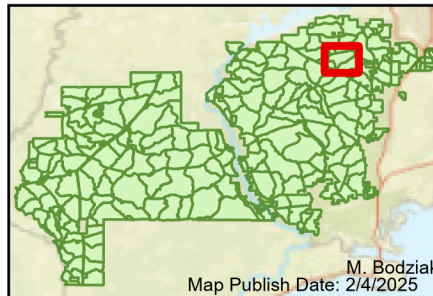


Prescribe Burn Map
 District: Wakulla
 Apalachicola National Forest
Burn Unit 229
 2678 FACTS Reportable Acres
 2456 Burnable Acres
 Last Burned: 3/26/2012



- RCW Tree
- RCW Cluster
- No Disturbance Zone
- Eagles
- Apiary
- Road Erosion
- Trails
- Control Line Road
- Natural Feature Line
- Sapling Pines

Burn Unit Info		Yrs. Last Burn	
Burn Unit		0 - 1	> 1 - 2
Private		> 2 - 3	> 3 - 4
USFS No Burn		> 4 - 5	> 5 - 10
Burnable Area		> 10 - 15	> 15 - 20
Did not burn last 27 yrs		> 20 - 25	
Burned during last 27 yrs			



Age of Rough Last Updated: 11/6/2024

BurnDate	Tr.Winds	Temp	Mix Ht.
RH	Disp. Index	Wind	KBDI
DSR	RX Position	Burn Boss	