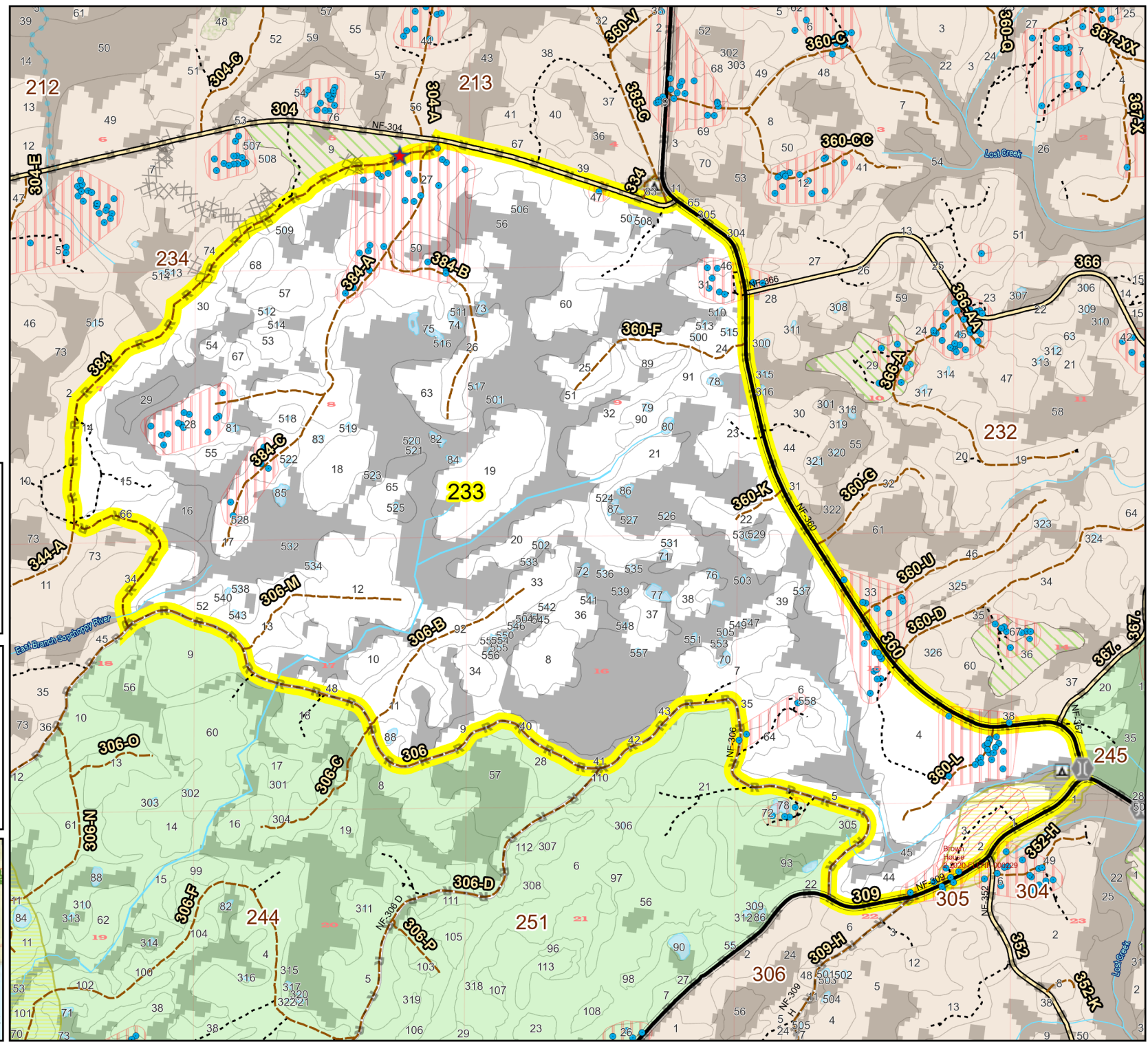
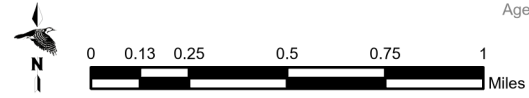
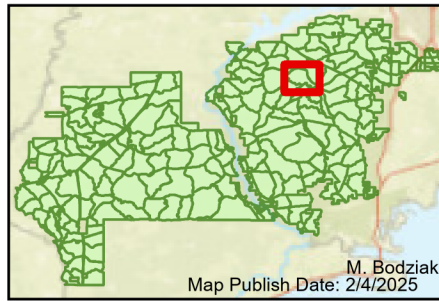


Prescribe Burn Map
 District: Wakulla
 Apalachicola National Forest
Burn Unit 233
 3387 FACTS Reportable Acres
 2192 Burnable Acres
 Last Burned: 2/14/2024



- RCW Tree
- RCW Cluster
- No
- Disturbance Zone
- ★ Apiary
- Dozer Line
- Control Line
- R
- Natural Feature Line
- Sapling Pines
- Savannah
- Road Erosion

Burn Unit Info		Yrs. Last Burn	
 Burn Unit		 0 - 1	
 Private		 > 1 - 2	
 USFS No Burn		 > 2 - 3	
		 > 3 - 4	
		 > 4 - 5	
		 > 5 - 10	
		 > 10 - 15	
		 > 15 - 20	
		 > 20 - 25	
Burnable Area			
 Did not burn last 27 yrs			
 Burned during last 27 yrs			



Age of Rough Last Updated: 11/6/2024

BurnDate	Tr. Winds	Temp	Mix Ht.
RH	Disp. Index	Wind	KBDI
DSR	RX Position	Burn Boss	