

Prescribe Burn Map

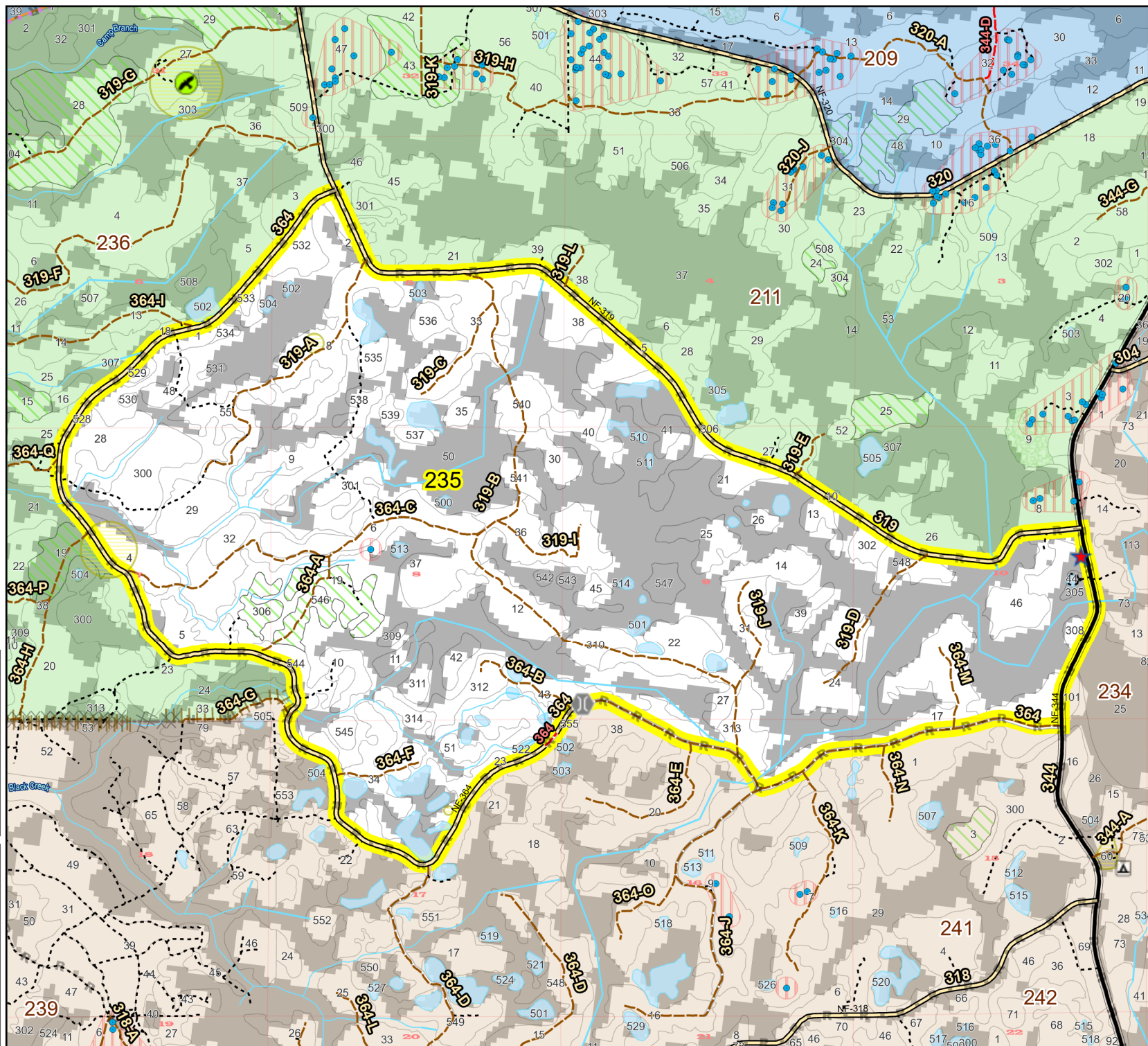
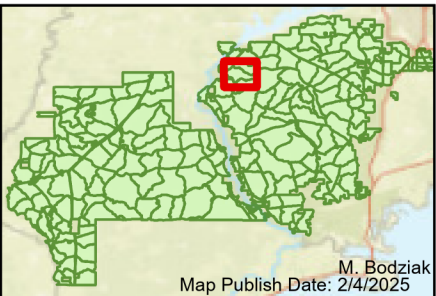
District: Wakulla
Apalachicola National Forest

Burn Unit 235

2661 FACTS Reportable Acres
1600 Burnable Acres
Last Burned: 2/19/2023

- RCW Tree
- RCW Cluster
- Disturbance Zone
- Eagles
- Apiary
- Road Erosion
- Dozer Line Prep - Rx Fire
- Dozer Line
- Control Line
- Road
- Private
- Boundary Line
- Sapling Pines
- Savannah

Burn Unit Info		Yrs. Last Burn	
	Burn Unit		0 - 1
	Private		> 1 - 2
	USFS No Burn		> 2 - 3
	Burnable Area		> 3 - 4
	Did not burn last 27 yrs		> 4 - 5
	Burned during last 27 yrs		> 5 - 10
			> 10 - 15
			> 15 - 20
			> 20 - 25



Age of Rough Last Updated: 11/6/2024

BurnDate	Tr.Winds	Temp	Mix Ht.
RH	Disp. Index	Wind	KBDI
DSR	RX Position	Burn Boss	

