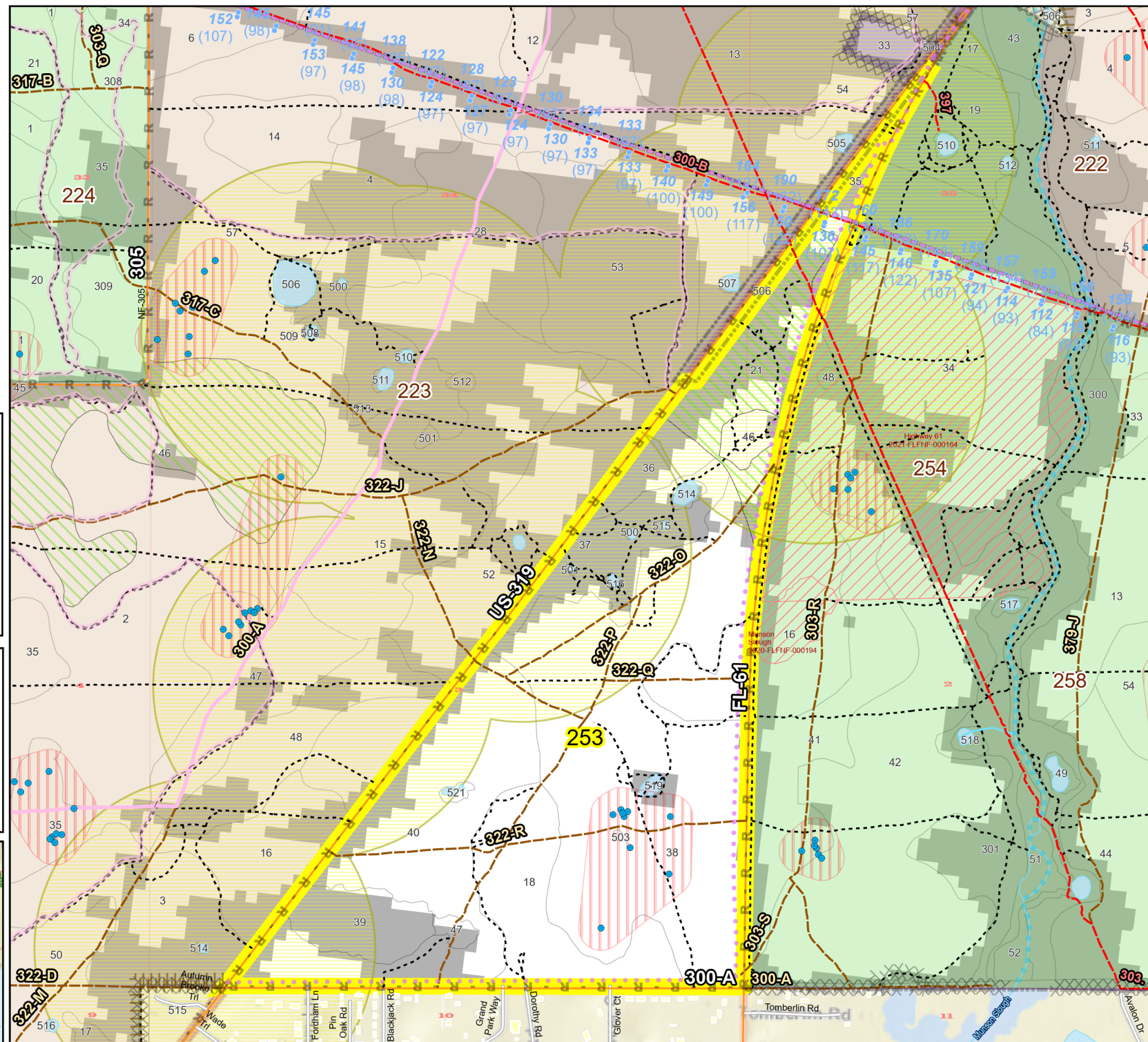
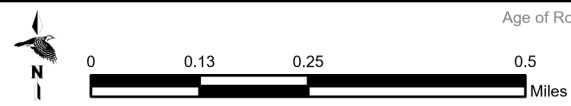
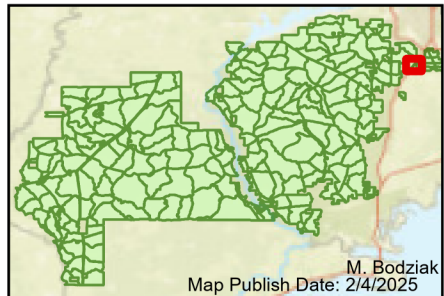


Prescribe Burn Map  
 District: Wakulla  
 Apalachicola National Forest  
**Burn Unit 253**  
 348 FACTS Reportable Acres  
 248 Burnable Acres  
 Last Burned: 5/30/2024



- RCW Tree
- RCW Cluster
- No Disturbance Zone
- Road Erosion
- Trails
- Towers (FAA)
- Dozer Line Prep - Rx Fire
- Dozer Line
- Control Line
- Road
- Natural Feature Line
- Private
- Boundary Line
- Sapling Pines

Burn Unit Info		Yrs. Last Burn	
<span style="background-color: yellow; border: 1px solid black; width: 15px; height: 10px;"></span> Burn Unit		<span style="background-color: #f0f0f0; width: 15px; height: 10px;"></span> 0 - 1	<span style="background-color: #c8e6c9; width: 15px; height: 10px;"></span> > 1 - 2
<span style="background-color: grey; border: 1px solid black; width: 15px; height: 10px;"></span> Private		<span style="background-color: #fff9c4; width: 15px; height: 10px;"></span> > 2 - 3	<span style="background-color: #fff176; width: 15px; height: 10px;"></span> > 3 - 4
<span style="border: 1px dashed black; width: 15px; height: 10px;"></span> USFS No Burn		<span style="background-color: #ffe0b2; width: 15px; height: 10px;"></span> > 4 - 5	<span style="background-color: #ffcdd2; width: 15px; height: 10px;"></span> > 5 - 10
Burnable Area		<span style="background-color: #fce4ec; width: 15px; height: 10px;"></span> > 10 - 15	<span style="background-color: #e1bee7; width: 15px; height: 10px;"></span> > 15 - 20
<span style="background-color: grey; border: 1px solid black; width: 15px; height: 10px;"></span> Did not burn last 27 yrs		<span style="background-color: #e1bee7; width: 15px; height: 10px;"></span> > 20 - 25	
<span style="background-color: white; border: 1px solid black; width: 15px; height: 10px;"></span> Burned during last 27 yrs			



Age of Rough Last Updated: 11/6/2024

BurnDate	Tr. Winds	Temp	Mix Ht.
RH	Disp. Index	Wind	KBDI
DSR	RX Position	Burn Boss	