

Prescribe Burn Map

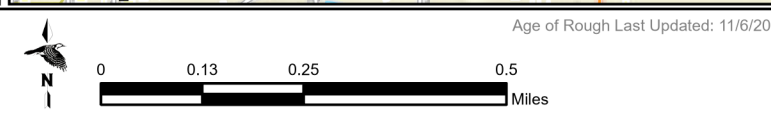
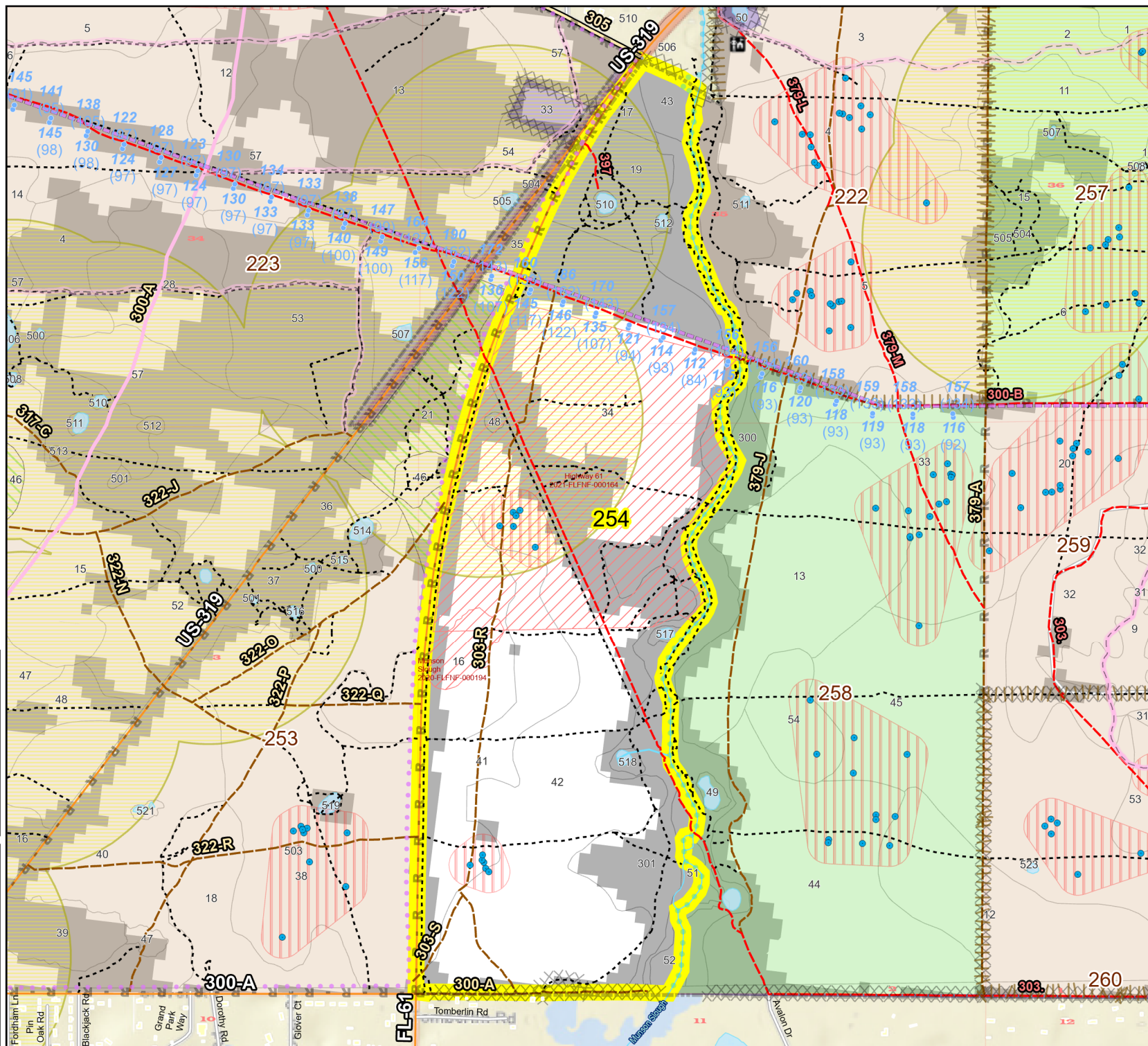
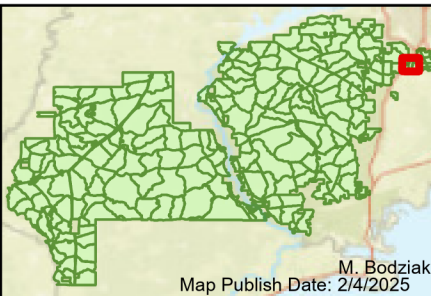
District: Wakulla
Apalachicola National Forest

Burn Unit 254

427 FACTS Reportable Acres
230 Burnable Acres
Last Burned: 1/20/2023

- RCW Tree
- RCW Cluster
- No Disturbance Zone
- Road Erosion
- Trails
- Towers (FAA)
- Dozer Line Prep - Rx Fire
- Dozer Line
- Control Line
- Natural Feature Line
- Private Boundary Line
- Sapling Pines

- Burn Unit Info**
- Burn Unit
 - Private
 - USFS No Burn
- Burnable Area**
- Did not burn last 27 yrs
 - Burned during last 27 yrs
- | Yrs. Last Burn | Color |
|----------------|-----------------|
| 0 - 1 | Lightest Yellow |
| > 1 - 2 | Light Green |
| > 2 - 3 | Light Blue |
| > 3 - 4 | Light Purple |
| > 4 - 5 | Light Orange |
| > 5 - 10 | Light Red |
| > 10 - 15 | Light Purple |
| > 15 - 20 | Light Blue |
| > 20 - 25 | Lightest Yellow |



Age of Rough Last Updated: 11/6/2024

BurnDate	Tr.Winds	Temp	Mix Ht.
RH	Disp. Index	Wind	KBDI
DSR	RX Position	Burn Boss	