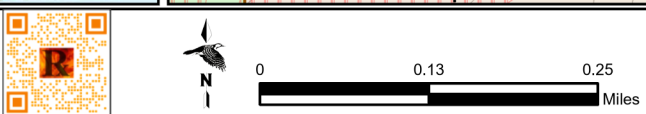
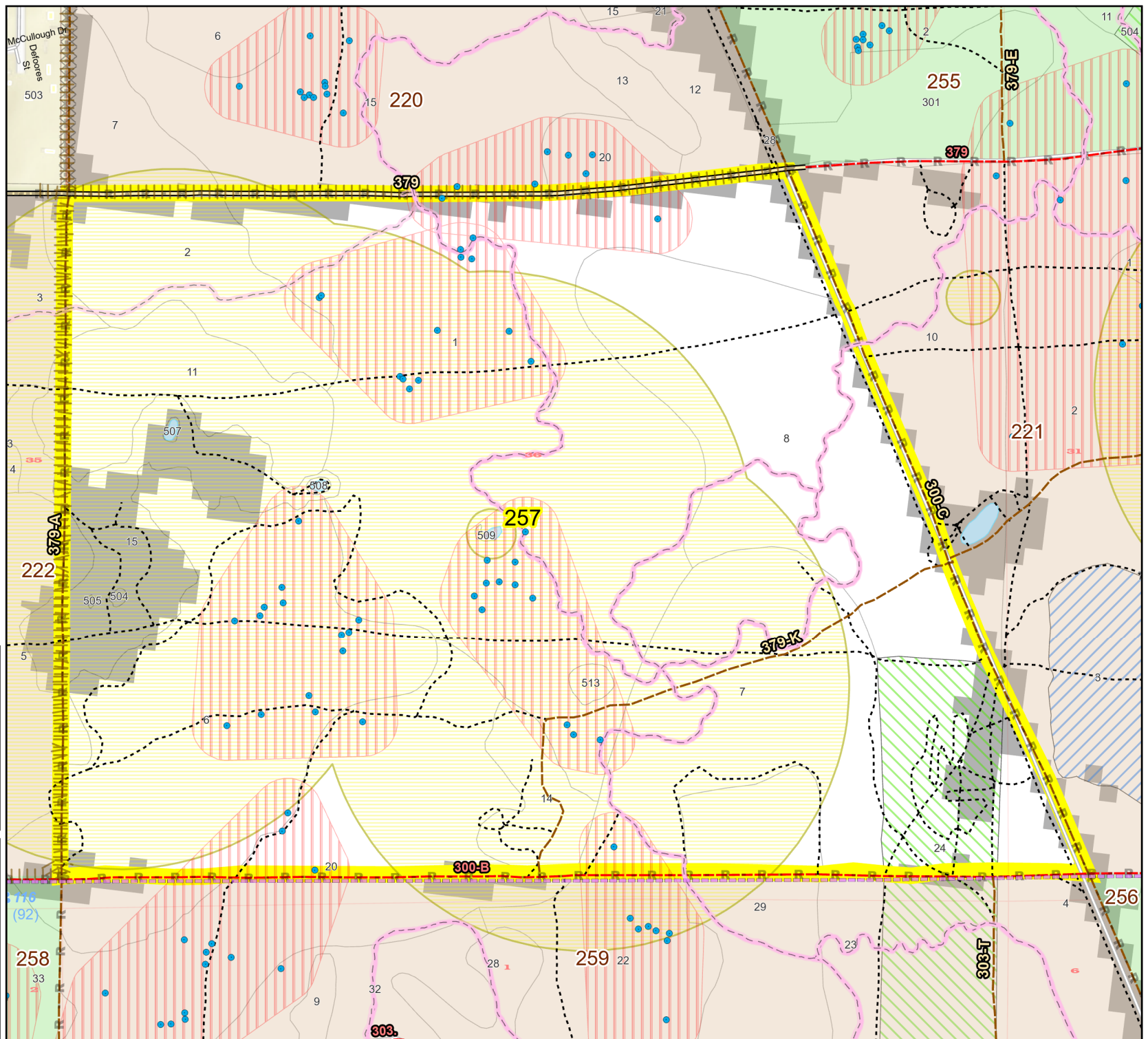
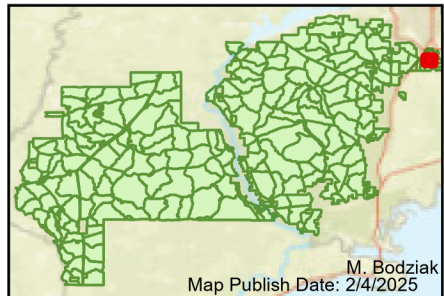


Prescribe Burn Map
 District: Wakulla
 Apalachicola National Forest
Burn Unit 257
 443 FACTS Reportable Acres
 399 Burnable Acres
 Last Burned: 2/13/2023

- RCW Tree
- RCW Cluster
- No Disturbance Zone
- Road Erosion
- Trails
- Dozer Line
- Prep - Rx Fire
- Dozer Line
- Control Line
- Road
- Private Boundary Line
- Young Longleaf
- Sapling Pines

- Burn Unit Info**
- | | |
|--|--|
| Burn Unit | 0 - 1 |
| Private | > 1 - 2 |
| USFS No Burn | > 2 - 3 |
| | > 3 - 4 |
| | > 4 - 5 |
| | > 5 - 10 |
| | > 10 - 15 |
| | > 15 - 20 |
| | > 20 - 25 |
- Burnable Area**
- Did not burn last 27 yrs
 - Burned during last 27 yrs



Age of Rough Last Updated: 11/6/2024

BurnDate _____	Tr.Winds _____	Temp _____	Mix Ht. _____
RH _____	Disp. Index _____	Wind _____	KBDI _____
DSR _____	RX Position _____	Burn Boss _____	