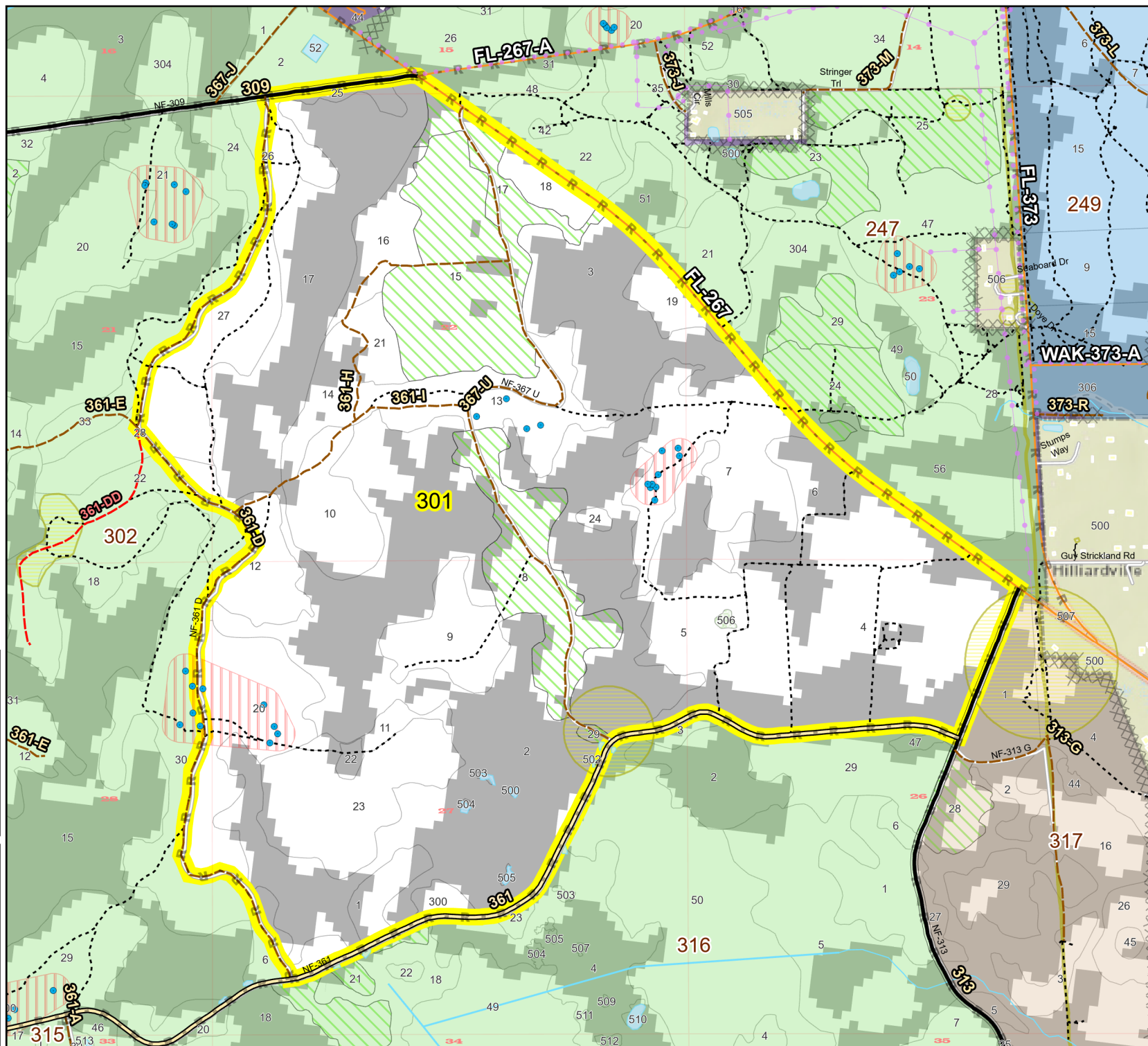
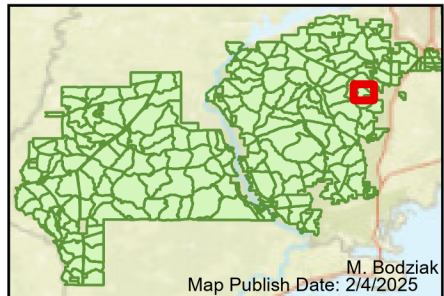


Prescribe Burn Map
 District: Wakulla
 Apalachicola National Forest
Burn Unit 301
 1292 FACTS Reportable Acres
 757 Burnable Acres
 Last Burned: 1/27/2023



- RCW Tree
- RCW Cluster
- No
- Disturbance Zone
- Road Erosion
- Dozer Line
- R** Control Line
- Road
- Other Line
- Private
- Boundary Line
- Sapling Pines
- Savannah

Burn Unit Info		Yrs. Last Burn	
 	Burn Unit	 	0 - 1
 	Private	 	> 1 - 2
 	USFS No Burn	 	> 2 - 3
		 	> 3 - 4
		 	> 4 - 5
		 	> 5 - 10
		 	> 10 - 15
		 	> 15 - 20
		 	> 20 - 25



Age of Rough Last Updated: 11/6/2024

BurnDate	Tr.Winds	Temp	Mix Ht.
RH	Disp. Index	Wind	KBDI
DSR	RX Position	Burn Boss	