

Prescribe Burn Map

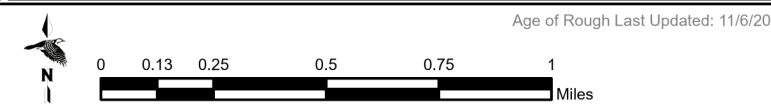
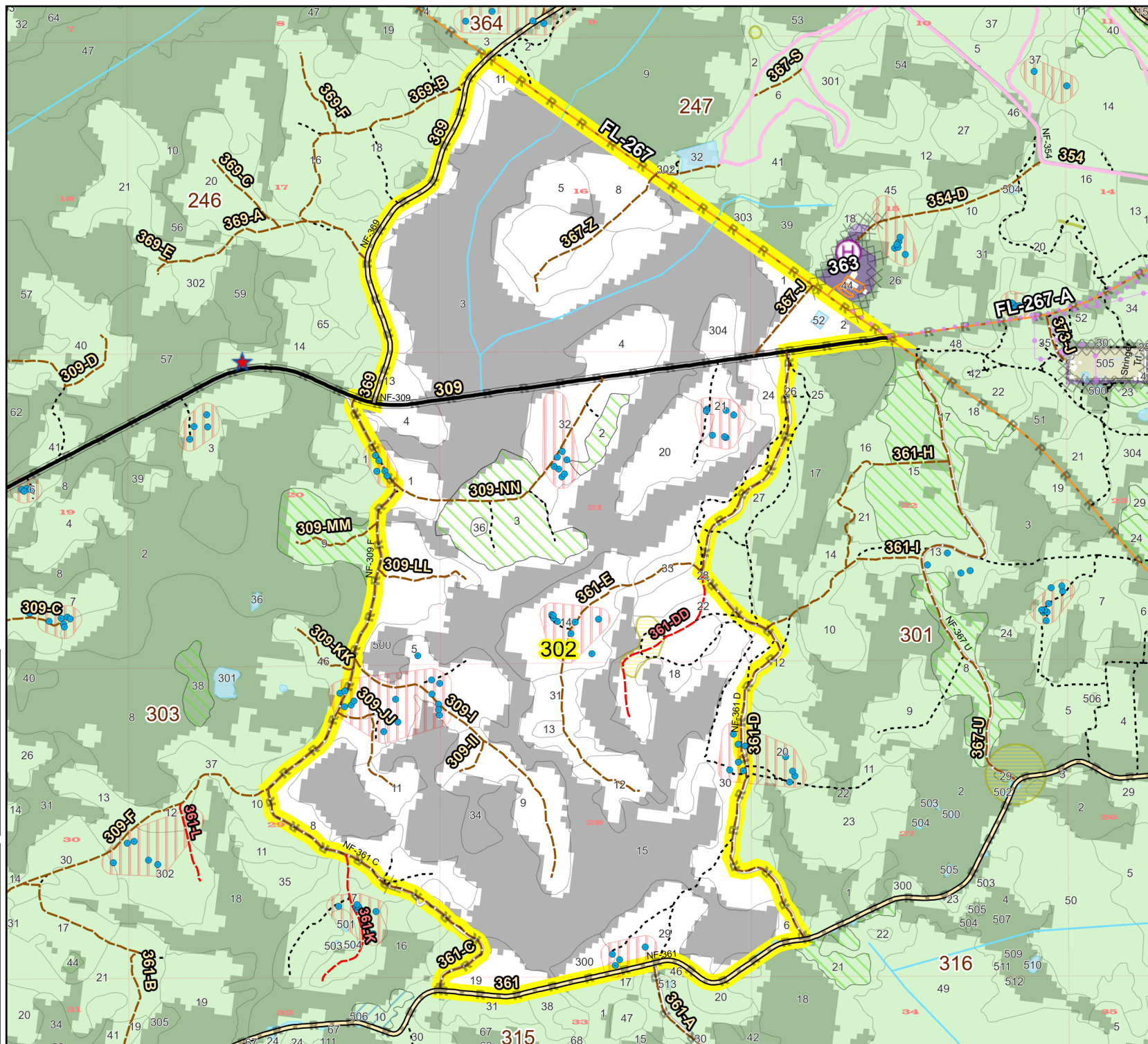
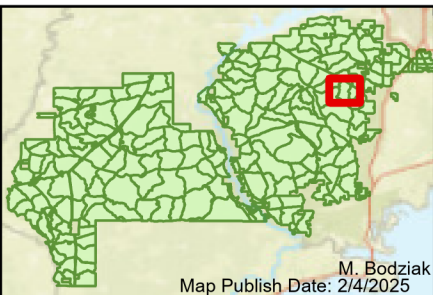
District: Wakulla
Apalachicola National Forest

Burn Unit 302

2140 FACTS Reportable Acres
1168 Burnable Acres
Last Burned: 1/27/2023

- RCW Tree
- RCW Cluster
- Disturbance Zone
- ★ Apiary
- Road Erosion
- Trails
- Dozer Line
- Control Line
- Road
- Private Boundary Line
- Young Longleaf
- Sapling Pines
- Savannah

- ### Burn Unit Info
- Burn Unit
 - Private
 - USFS No Burn
- | Yrs. Last Burn | Color |
|----------------|--|
| 0 - 1 | |
| > 1 - 2 | |
| > 2 - 3 | |
| > 3 - 4 | |
| > 4 - 5 | |
| > 5 - 10 | |
| > 10 - 15 | |
| > 15 - 20 | |
| > 20 - 25 | |
- ### Burnable Area
- Did not burn last 27 yrs
 - Burned during last 27 yrs



BurnDate _____	Tr.Winds _____	Temp _____	Mix Ht. _____
RH _____	Disp. Index _____	Wind _____	KBDI _____
DSR _____	RX Position _____	Burn Boss _____	