

Prescribe Burn Map

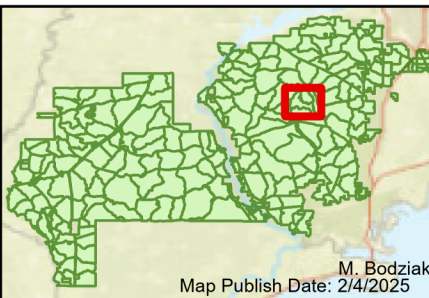
District: Wakulla
Apalachicola National Forest

Burn Unit 306

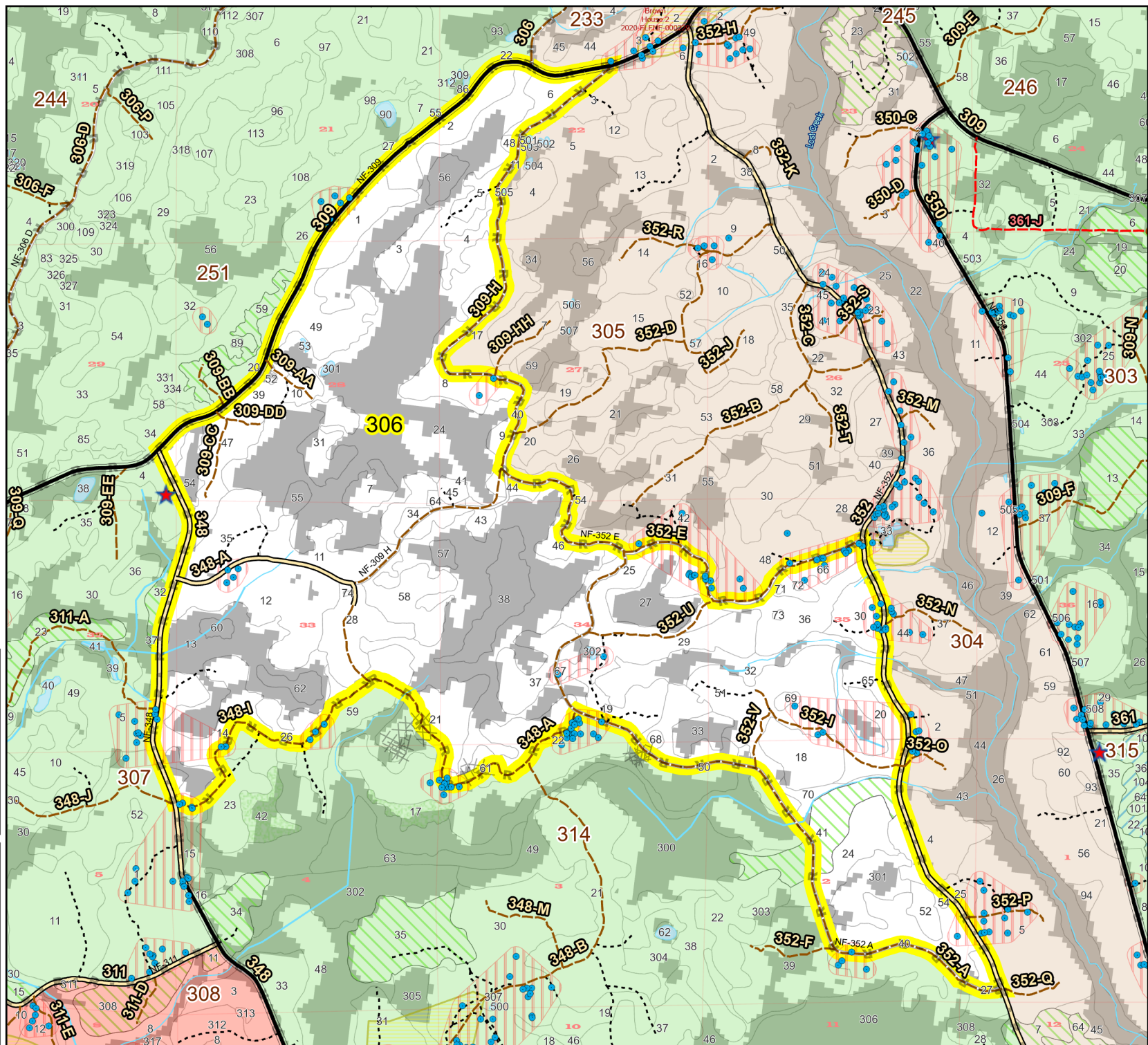
2532 FACTS Reportable Acres
1759 Burnable Acres
Last Burned: 5/2/2024

- RCW Tree
- ▨ RCW Cluster
- No Disturbance Zone
- ★ Apiary
- ⚠ Road Erosion
- ⊠ Dozer Line
- R Control Line
- ▨ Young Longleaf
- ▨ Sapling Pines
- ▨ Savannah

Burn Unit Info	Yrs. Last Burn
— Burn Unit	0 - 1
■ Private	> 1 - 2
⊠ USFS No Burn	> 2 - 3
	> 3 - 4
	> 4 - 5
	> 5 - 10
	> 10 - 15
	> 15 - 20
	> 20 - 25



M. Bodziak
Map Publish Date: 2/4/2025



Age of Rough Last Updated: 11/6/2024

BurnDate	Tr.Winds	Temp	Mix Ht.
RH	Disp. Index	Wind	KBDI
DSR	RX Position	Burn Boss	

