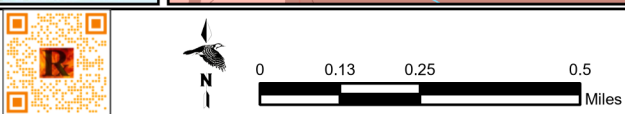
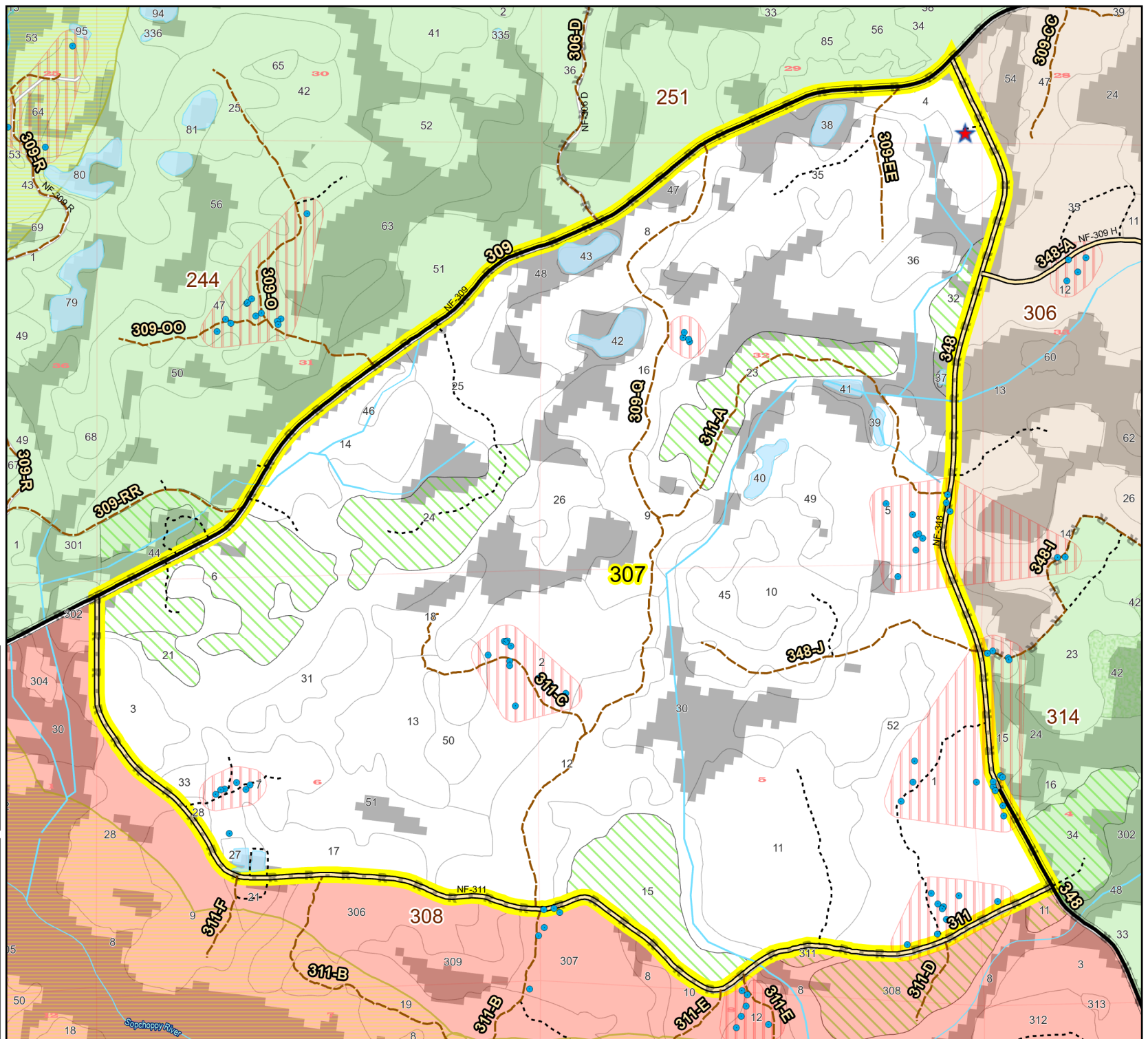
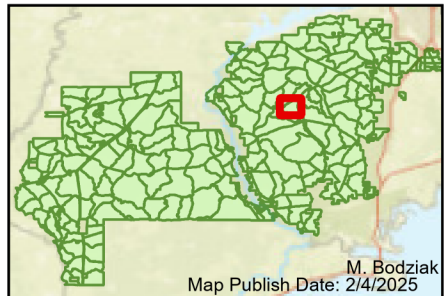


Prescribe Burn Map
 District: Wakulla
 Apalachicola National Forest
Burn Unit 307
 1810 FACTS Reportable Acres
 1549 Burnable Acres
 Last Burned: 5/9/2024

- RCW Tree
- RCW Cluster
- No
- Disturbance Zone
- ★ Apiary
- Road Erosion Control Line
- Road
- Natural Feature Line
- Sapling Pines
- Savannah

Burn Unit Info		Yrs. Last Burn	
 Burn Unit		 0 - 1	 > 1 - 2
 Private		 > 2 - 3	 > 3 - 4
 USFS No Burn		 > 4 - 5	 > 5 - 10
Burnable Area		 > 10 - 15	 > 15 - 20
 Did not burn last 27 yrs		 > 20 - 25	
 Burned during last 27 yrs			



Age of Rough Last Updated: 11/6/2024

BurnDate	Tr. Winds	Temp	Mix Ht.
RH	Disp. Index	Wind	KBDI
DSR	RX Position	Burn Boss	