

Prescribe Burn Map

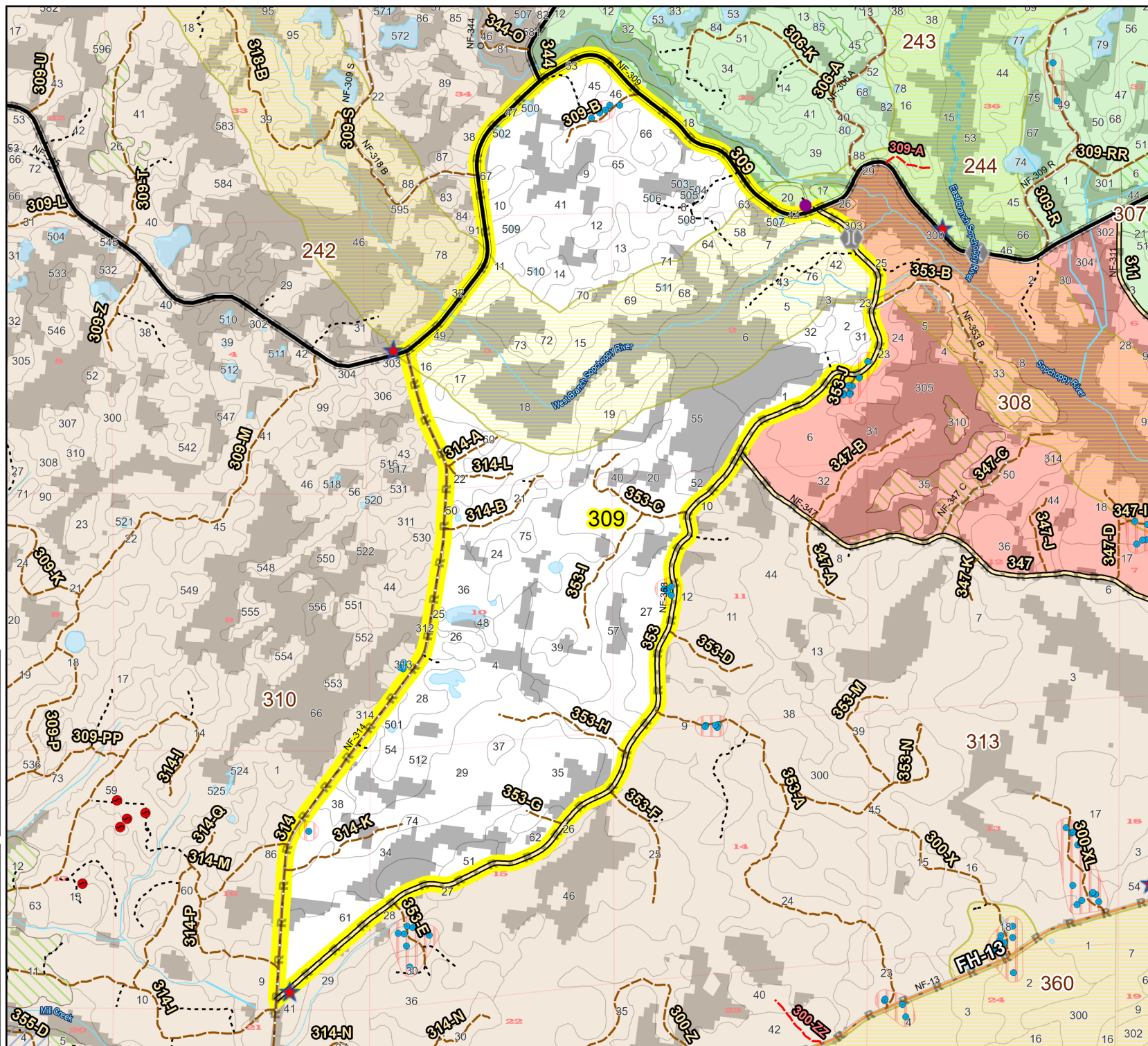
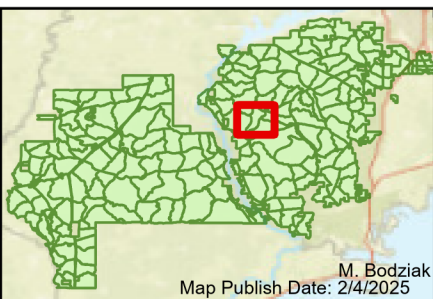
District: Wakulla
Apalachicola National Forest

Burn Unit 309

2364 FACTS Reportable Acres
1766 Burnable Acres
Last Burned: 3/16/2023

- RCW Tree
- RCW Cluster
- No
- Disturbance Zone
- ★ Apiary
- Road Erosion Control Line
- Road
- Natural Feature Line
- Young Longleaf
- Sapling Pines

Burn Unit Info		Yrs. Last Burn	
	Burn Unit		0 - 1
	Private		> 1 - 2
	USFS No Burn		> 2 - 3
			> 3 - 4
			> 4 - 5
			> 5 - 10
			> 10 - 15
			> 15 - 20
			> 20 - 25



Age of Rough Last Updated: 11/6/2024

BurnDate _____	Tr.Winds _____	Temp _____	Mix Ht. _____
RH _____	Disp. Index _____	Wind _____	KBDI _____
DSR _____	RX Position _____	Burn Boss _____	

