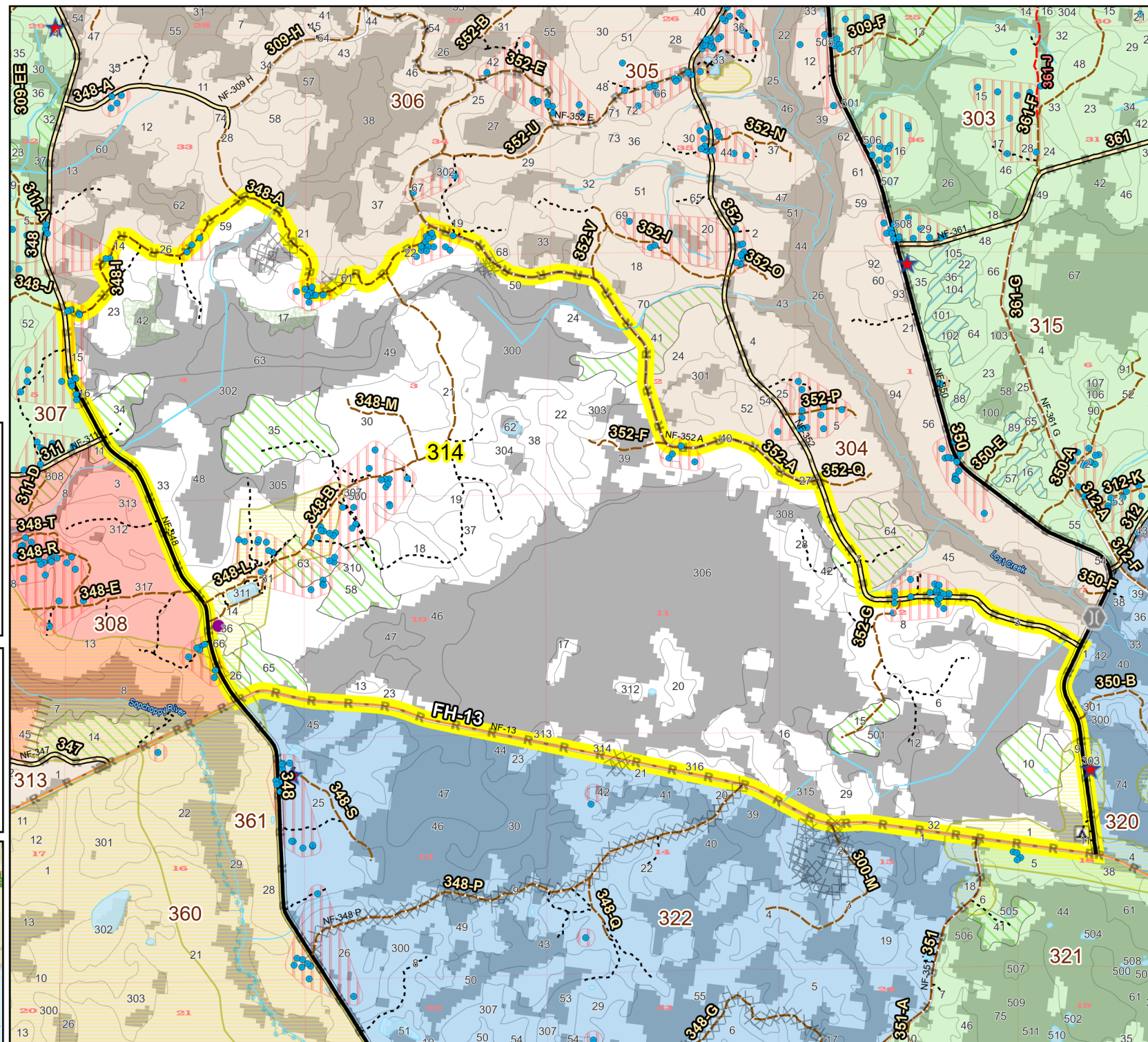
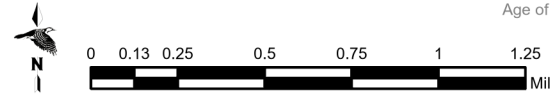
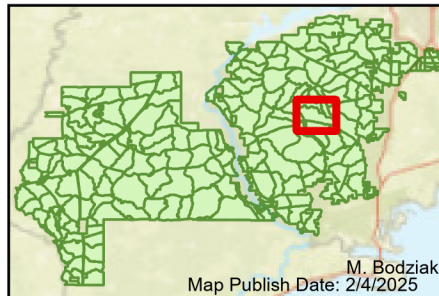


Prescribe Burn Map
 District: Wakulla
 Apalachicola National Forest
Burn Unit 314
 3939 FACTS Reportable Acres
 2014 Burnable Acres
 Last Burned: 6/2/2023



- RCW Tree
- RCW Cluster
- Disturbance Zone
- ★ Apiary
- Road Erosion
- Building Footprints
- Dozer Line
- Control Line
- Road
- Natural Feature Line
- Young Longleaf
- Sapling Pines
- Savannah

Burn Unit Info		Yrs. Last Burn	
 Burn Unit		 0 - 1	 > 1 - 2
 Private		 > 2 - 3	 > 3 - 4
 USFS No Burn		 > 4 - 5	 > 5 - 10
Burnable Area		 > 10 - 15	 > 15 - 20
 Did not burn last 27 yrs		 > 20 - 25	
 Burned during last 27 yrs			



Age of Rough Last Updated: 11/6/2024

BurnDate _____	Tr.Winds _____	Temp _____	Mix Ht. _____
RH _____	Disp. Index _____	Wind _____	KBDI _____
DSR _____	RX Position _____	Burn Boss _____	