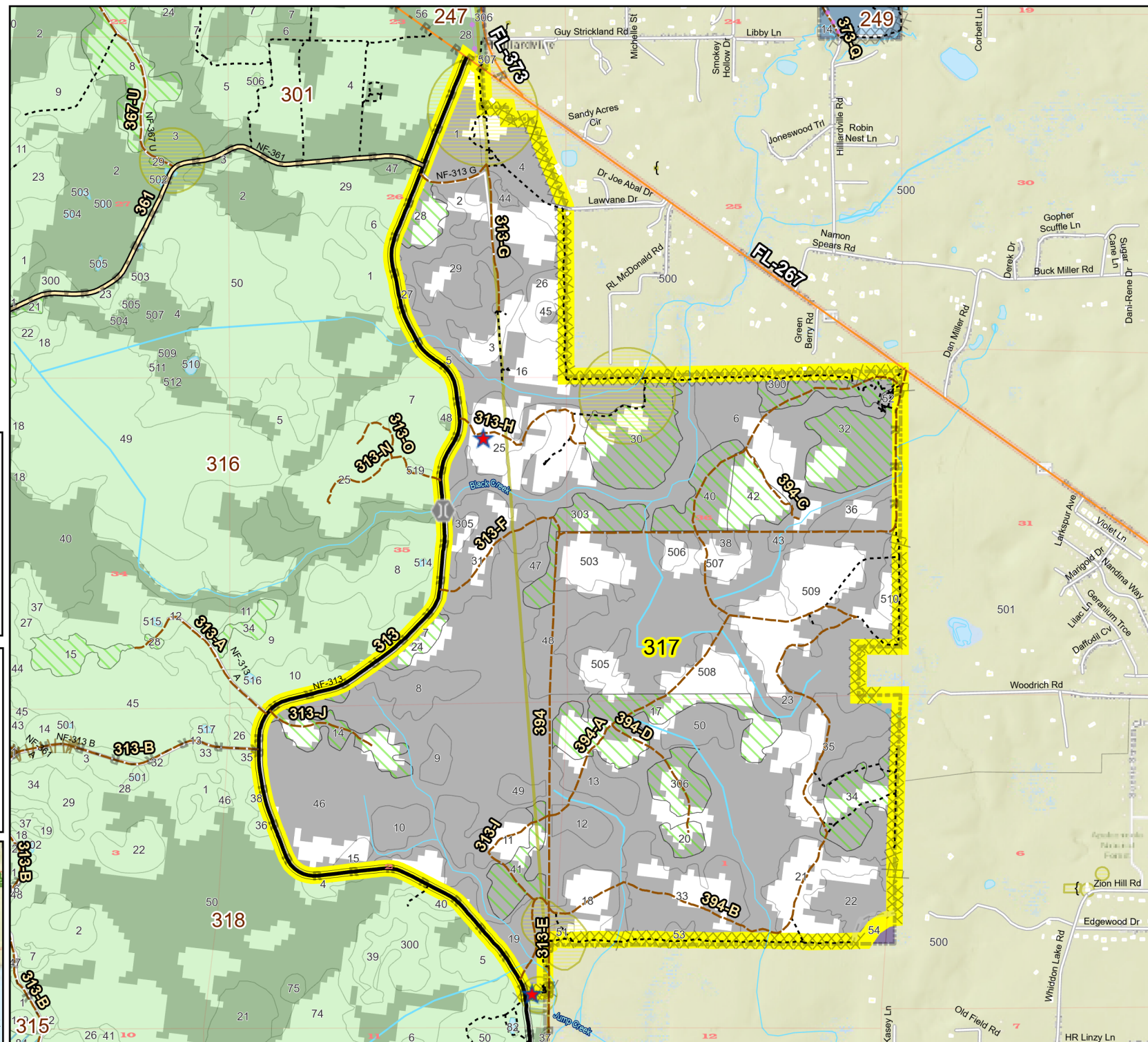
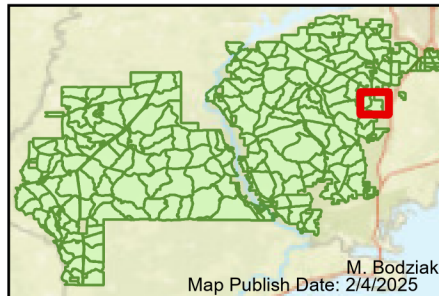


Prescribe Burn Map  
 District: Wakulla  
 Apalachicola National Forest  
**Burn Unit 317**  
 1878 FACTS Reportable Acres  
 479 Burnable Acres  
 Last Burned: 3/11/2024



- No Disturbance Zone
- Apiary
- Road Erosion
- Dozer Line
- Control Line Road
- Other Line
- Natural Feature Line
- Private Boundary Line
- Young Longleaf
- Sapling Pines
- Savannah

Burn Unit Info		Yrs. Last Burn	
Burn Unit		0 - 1	
Private		> 1 - 2	
USFS No Burn		> 2 - 3	
		> 3 - 4	
		> 4 - 5	
		> 5 - 10	
		> 10 - 15	
		> 15 - 20	
		> 20 - 25	



Age of Rough Last Updated: 11/6/2024

BurnDate	Tr.Winds	Temp	Mix Ht.
RH	Disp. Index	Wind	KBDI
DSR	RX Position	Burn Boss	