

Prescribe Burn Map

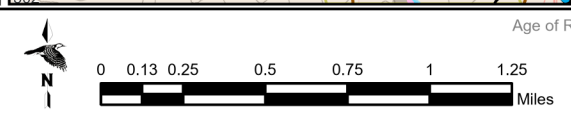
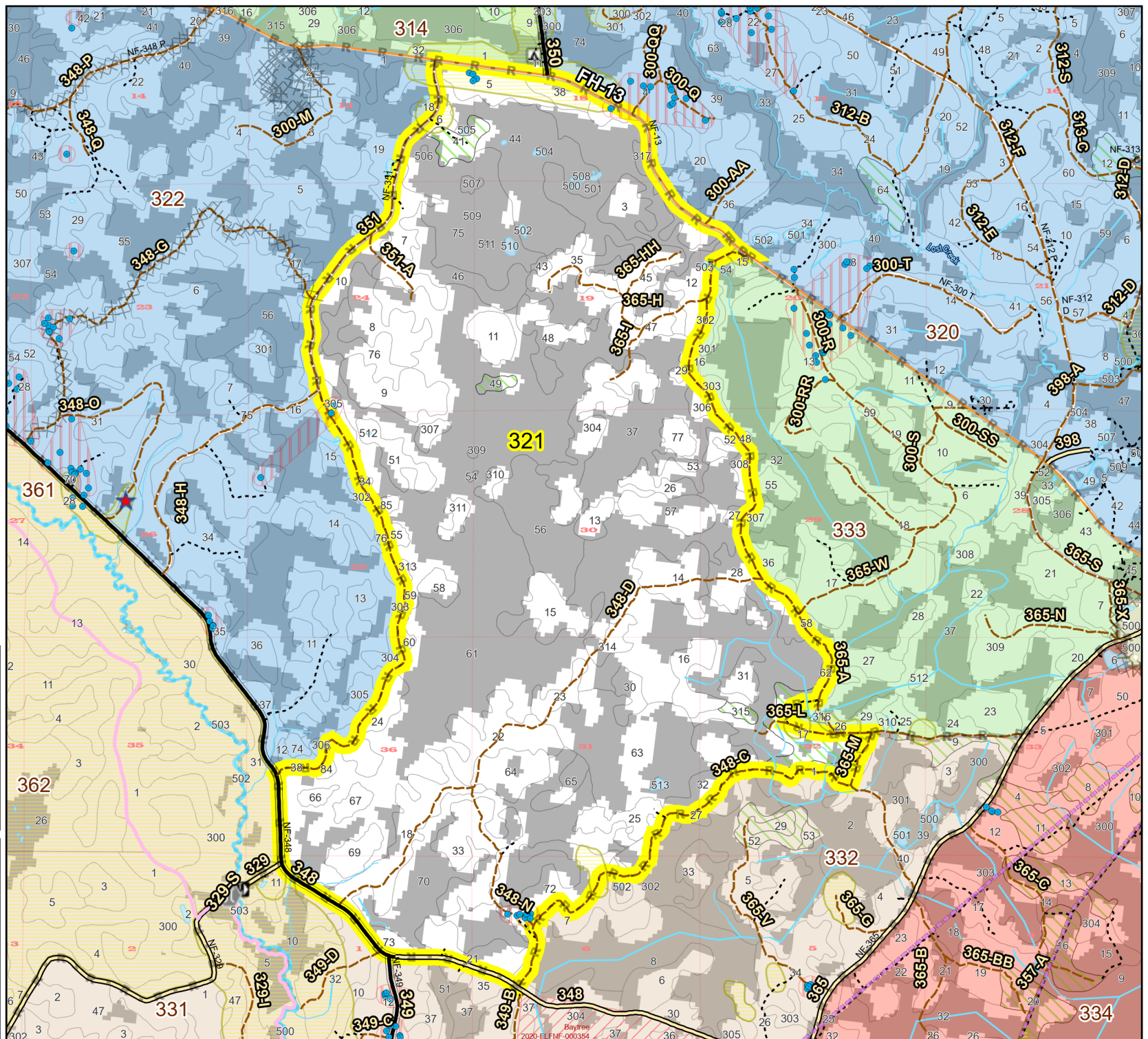
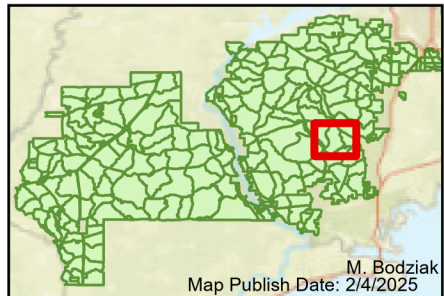
District: Wakulla
Apalachicola National Forest

Burn Unit 321

3939 FACTS Reportable Acres
1784 Burnable Acres
Last Burned: 2/8/2023

- RCW Tree
- RCW Cluster
- Disturbance Zone
- Apiary
- Road Erosion
- Trails
- Dozer Line Prep - Rx Fire
- Dozer Line
- Control Line Road
- Natural Feature Line
- Private Boundary Line
- Sapling Pines

- Burn Unit Info**
- Burn Unit
 - Private
 - USFS No Burn
- Burnable Area**
- Did not burn last 27 yrs
 - Burned during last 27 yrs
- Yrs. Last Burn**
- 0 - 1
 - > 1 - 2
 - > 2 - 3
 - > 3 - 4
 - > 4 - 5
 - > 5 - 10
 - > 10 - 15
 - > 15 - 20
 - > 20 - 25



Age of Rough Last Updated: 11/6/2024

BurnDate	Tr. Winds	Temp	Mix Ht.
RH	Disp. Index	Wind	KBDI
DSR	RX Position	Burn Boss	