

Prescribe Burn Map

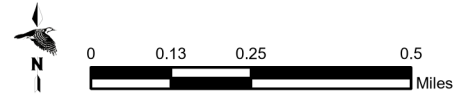
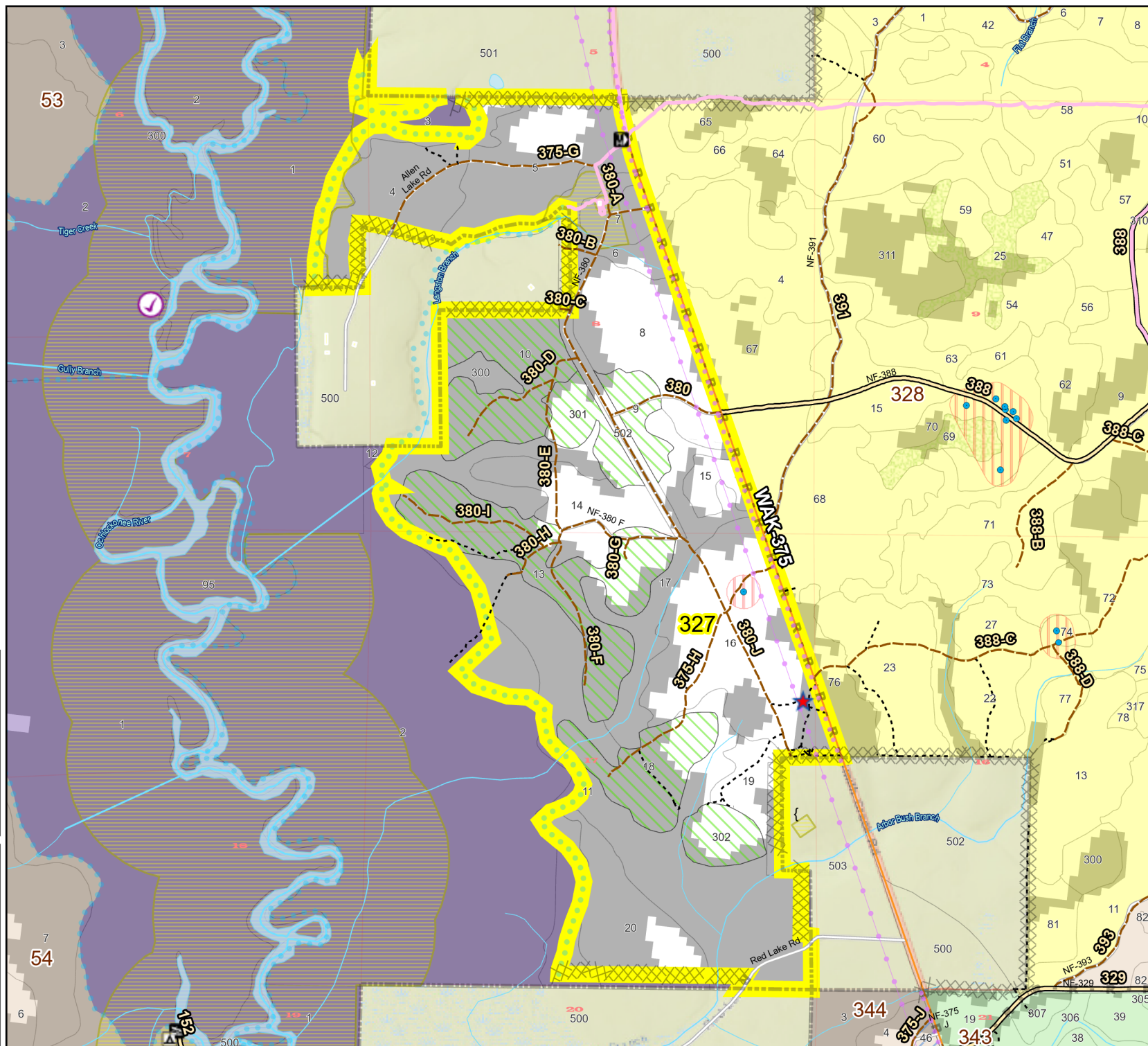
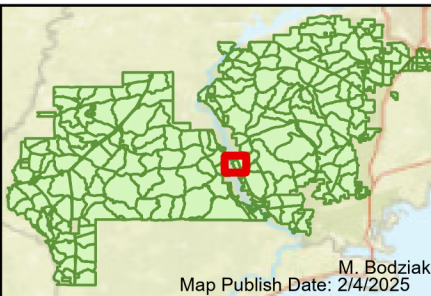
District: Wakulla
Apalachicola National Forest

Burn Unit 327

761 FACTS Reportable Acres
232 Burnable Acres
Last Burned: 1/28/2008

- RCW Tree
- RCW Cluster
- Disturbance Zone
- Apiary
- Road Erosion
- Trails
- Building Footprints
- Dozer Line
- Control Line Road
- Natural Feature Line
- Private Boundary Line
- Young Longleaf
- Sapling Pines
- Savannah

Burn Unit Info		Yrs. Last Burn	
	Burn Unit		0 - 1
	Private		> 1 - 2
	USFS No Burn		> 2 - 3
			> 3 - 4
			> 4 - 5
			> 5 - 10
			> 10 - 15
			> 15 - 20
			> 20 - 25



Age of Rough Last Updated: 11/6/2024

BurnDate _____	Tr.Winds _____	Temp _____	Mix Ht. _____
RH _____	Disp. Index _____	Wind _____	KBDI _____
DSR _____	RX Position _____	Burn Boss _____	